

Datasheet for ABIN7149870
anti-SAT2 antibody (AA 1-170)[Go to Product page](#)

3 Images

Overview

Quantity:	100 µg
Target:	SAT2
Binding Specificity:	AA 1-170
Reactivity:	Human
Host:	Rabbit
Clonality:	Polyclonal
Conjugate:	This SAT2 antibody is un-conjugated
Application:	ELISA, Immunohistochemistry (IHC), Immunofluorescence (IF)

Product Details

Immunogen:	Recombinant Human Diamine acetyltransferase 2 protein (1-170AA)
Isotype:	IgG
Cross-Reactivity:	Human
Purification:	>95%, Protein G purified

Target Details

Target:	SAT2
Alternative Name:	SAT2 (SAT2 Products)
Background:	Background: Enzyme which catalyzes the acetylation of polyamines. Substrate specificity: norspermidine > spermidine = spermine >> N(1)acetylspermine = putrescine.

Target Details

Aliases: Amino acid transporter A2 antibody, ATA2 antibody, Diamine acetyltransferase 2 antibody, Diamine N acetyltransferase 2 antibody, Polyamine N acetyltransferase antibody, Polyamine N-acetyltransferase 2 antibody, Protein 40 9 1 antibody, SAT2 antibody, SAT2_HUMAN antibody, SNAT2 antibody, Solute carrier family 38 member 2 antibody, Spermidine/spermine N(1)-acetyltransferase 2 antibody, Spermidine/spermine N1 acetyltransferase 2 antibody, Spermidine/spermine N1 acetyltransferase family member 2 antibody, SSAT2 antibody, System A amino acid transporter 2 antibody, System A transporter 1 antibody, System N amino acid transporter 2 antibody, Thialysine N-epsilon-acetyltransferase antibody

UniProt: [Q96F10](#)

Application Details

Application Notes: Recommended dilution: IHC:1:200-1:500, IF:1:50-1:200,

Restrictions: For Research Use only

Handling

Format: Liquid

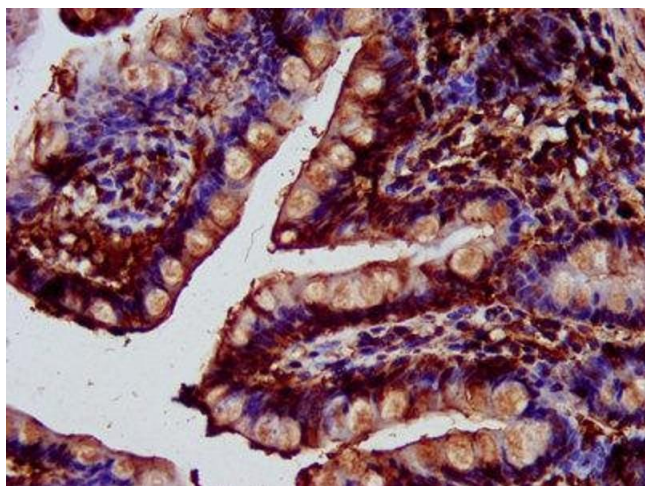
Buffer: Preservative: 0.03 % Proclin 300
Constituents: 50 % Glycerol, 0.01M PBS, pH 7.4

Preservative: ProClin

Precaution of Use: This product contains ProClin: a POISONOUS AND HAZARDOUS SUBSTANCE which should be handled by trained staff only.

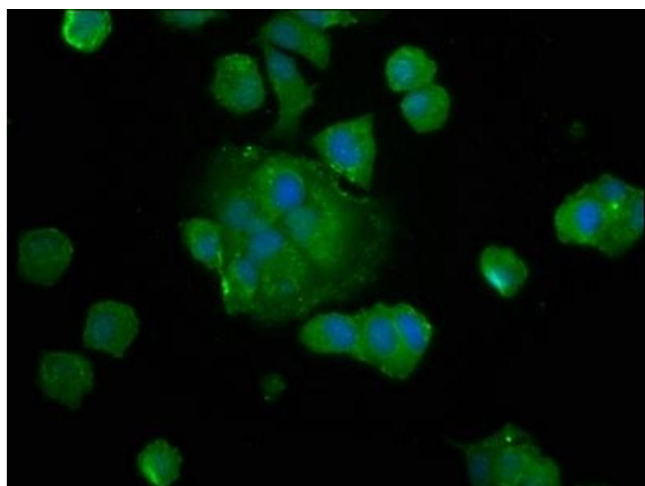
Storage: -20 °C,-80 °C

Storage Comment: Upon receipt, store at -20°C or -80°C. Avoid repeated freeze.



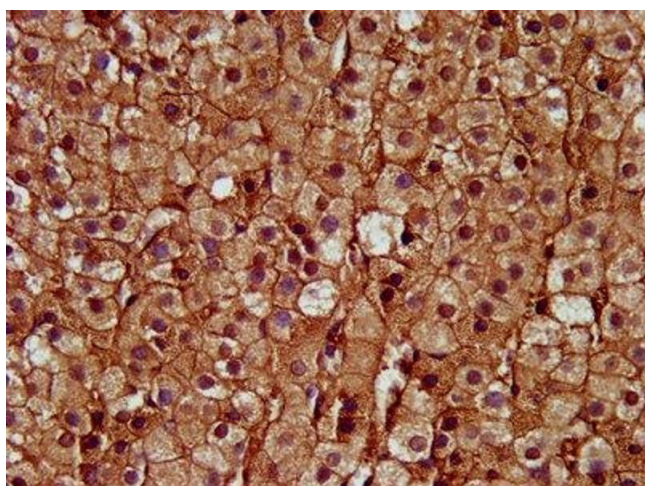
Immunohistochemistry

Image 1. IHC image of ABIN7149870 diluted at 1:400 and staining in paraffin-embedded human small intestine tissue performed on a Leica Bond™ system. After dewaxing and hydration, antigen retrieval was mediated by high pressure in a citrate buffer (pH 6.0). Section was blocked with 10% normal goat serum 30min at RT. Then primary antibody (1% BSA) was incubated at 4°C overnight. The primary is detected by a biotinylated secondary antibody and visualized using an HRP conjugated SP system.



Immunofluorescence

Image 2. Immunofluorescence staining of MCF-7 cells with ABIN7149870 at 1:133, counter-stained with DAPI. The cells were fixed in 4% formaldehyde, permeabilized using 0.2% Triton X-100 and blocked in 10% normal Goat Serum. The cells were then incubated with the antibody overnight at 4°C. The secondary antibody was Alexa Fluor 488-conjugated AffiniPure Goat Anti-Rabbit IgG(H+L).



Immunohistochemistry

Image 3. IHC image of ABIN7149870 diluted at 1:400 and staining in paraffin-embedded human adrenal gland tissue performed on a Leica Bond™ system. After dewaxing and hydration, antigen retrieval was mediated by high pressure in a citrate buffer (pH 6.0). Section was blocked with 10% normal goat serum 30min at RT. Then primary antibody (1% BSA) was incubated at 4°C overnight. The primary is detected by a biotinylated secondary antibody and visualized using an HRP conjugated SP system.