



[Go to Product page](#)

Datasheet for ABIN7149892
anti-DEF6 antibody (AA 20-114)

2 Images

Overview

Quantity:	100 µg
Target:	DEF6
Binding Specificity:	AA 20-114
Reactivity:	Human
Host:	Rabbit
Clonality:	Polyclonal
Conjugate:	This DEF6 antibody is un-conjugated
Application:	Western Blotting (WB), ELISA, Immunofluorescence (IF)

Product Details

Immunogen:	Recombinant Human Differentially expressed in FDCP 6 homolog protein (20-114AA)
Isotype:	IgG
Cross-Reactivity:	Human, Mouse
Purification:	>95%, Protein G purified

Target Details

Target:	DEF6
Alternative Name:	DEF6 (DEF6 Products)
Background:	Background: Phosphatidylinositol 3,4,5-trisphosphate-dependent guanine nucleotide exchange factor (GEF) which plays a role in the activation of Rho GTPases RAC1, RhoA and CDC42. Can

Target Details

regulate cell morphology in cooperation with activated RAC1. Plays a role in Th2 (T helper cells) development and/or activation, perhaps by interfering with ZAP70 signaling (By similarity).

Aliases: DEF-6 antibody, Def6 antibody, DEFI6_HUMAN antibody, Differentially expressed in FDCP 6 homolog antibody, Differentially expressed in FDCP 6 homologue mouse antibody, IBP antibody, IRF4-binding protein antibody, Swap70 like adapter of T cells antibody

UniProt: [Q9H4E7](#)

Application Details

Application Notes: Recommended dilution: WB:1:500-1:5000, IF:1:50-1:200,

Restrictions: For Research Use only

Handling

Format: Liquid

Buffer: Preservative: 0.03 % Proclin 300
Constituents: 50 % Glycerol, 0.01M PBS, PH 7.4

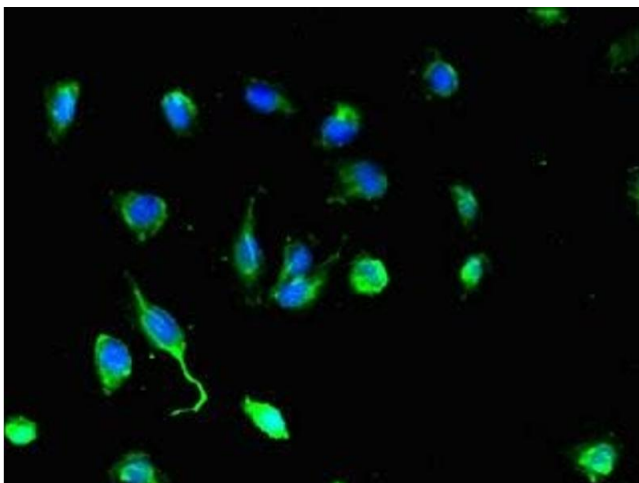
Preservative: ProClin

Precaution of Use: This product contains ProClin: a POISONOUS AND HAZARDOUS SUBSTANCE which should be handled by trained staff only.

Storage: -20 °C,-80 °C

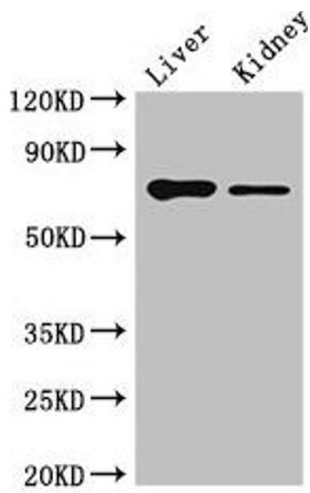
Storage Comment: Upon receipt, store at -20°C or -80°C. Avoid repeated freeze.

Images



Immunofluorescence

Image 1. Immunofluorescent analysis of U251 cells using ABIN7149892 at dilution of 1:100 and Alexa Fluor 488-conjugated AffiniPure Goat Anti-Rabbit IgG(H+L)



Western Blotting

Image 2. Western Blot Positive WB detected in: Mouse liver tissue, Mouse kidney tissue All lanes: DEF6 antibody at 4 μ g/mL Secondary Goat polyclonal to rabbit IgG at 1/50000 dilution Predicted band size: 74 kDa Observed band size: 74 kDa