

Datasheet for ABIN7149904
anti-DLD antibody (AA 398-495)[Go to Product page](#)

2 Images

Overview

Quantity:	100 µg
Target:	DLD
Binding Specificity:	AA 398-495
Reactivity:	Human
Host:	Rabbit
Clonality:	Polyclonal
Conjugate:	This DLD antibody is un-conjugated
Application:	Western Blotting (WB), Immunohistochemistry (IHC), ELISA

Product Details

Immunogen:	Recombinant Human Dihydrolipoyl dehydrogenase, mitochondrial protein (398-495AA)
Isotype:	IgG
Cross-Reactivity:	Human, Mouse, Rat
Purification:	>95%, Protein G purified

Target Details

Target:	DLD
Alternative Name:	DLD (DLD Products)
Background:	Background: Lipoamide dehydrogenase is a component of the glycine cleavage system as well as an E3 component of three alpha-ketoacid dehydrogenase complexes (pyruvate-, alpha-

Target Details

ketoglutarate-, and branched-chain amino acid-dehydrogenase complex). In monomeric form has additional moonlighting function as serine protease (PubMed:17404228). Involved in the hyperactivation of spermatazoa during capacitation and in the spermatazoal acrosome reaction (By similarity).

Aliases: Dehydrogenase complex, E3 component antibody, Diaphorase antibody, Dihydrolipoamide dehydrogenase antibody, Dihydrolipoyl dehydrogenase antibody, Dihydrolipoyl dehydrogenase mitochondrial antibody, dld antibody, DLDD antibody, DLDH antibody, DLDH_HUMAN antibody, E3 antibody, E3 branched chain alpha-keto acid antibody, E3 component of pyruvate dehydrogenase antibody, E3 component of pyruvate dehydrogenase complex 2 oxo glutarate complex branched chain keto acid dehydrogenase complex antibody, GCSL antibody, Glycine cleavage system L protein antibody, Glycine cleavage system protein L antibody, LAD antibody, lipoamide dehydrogenase antibody, Lipoamide reductase antibody, Lipoyl dehydrogenase antibody, mitochondrial antibody, OTTHUMP00000206744 antibody, OTTHUMP00000206746 antibody, OTTHUMP00000206748 antibody, OTTHUMP00000206749 antibody, PHE 3 antibody, PHE3 antibody, Pyruvate dehydrogenase component E3 antibody

UniProt: [P09622](#)

Pathways: [Ribonucleoside Biosynthetic Process](#), [Cell RedoxHomeostasis](#)

Application Details

Application Notes: Recommended dilution: WB:1:500-1:5000, IHC:1:20-1:200,

Restrictions: For Research Use only

Handling

Format: Liquid

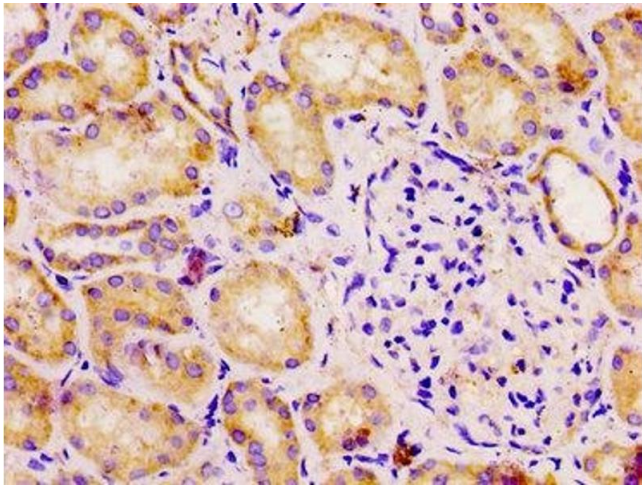
Buffer: Preservative: 0.03 % Proclin 300
Constituents: 50 % Glycerol, 0.01M PBS, pH 7.4

Preservative: ProClin

Precaution of Use: This product contains ProClin: a POISONOUS AND HAZARDOUS SUBSTANCE which should be handled by trained staff only.

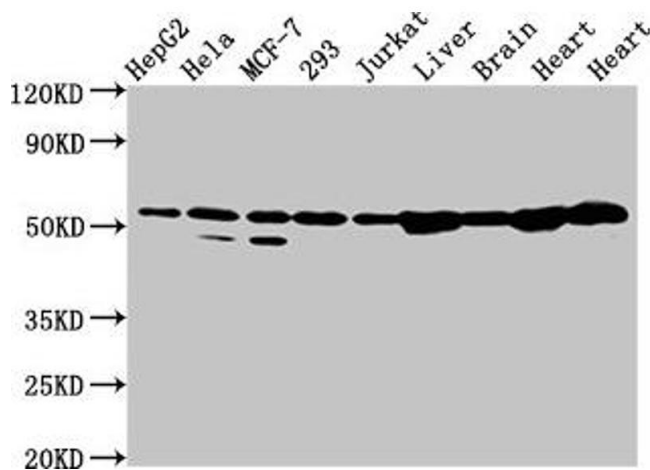
Storage: -20 °C,-80 °C

Storage Comment: Upon receipt, store at -20°C or -80°C. Avoid repeated freeze.



Immunohistochemistry

Image 1. IHC image of ABIN7149904 diluted at 1:100 and staining in paraffin-embedded human kidney tissue performed on a Leica Bond™ system. After dewaxing and hydration, antigen retrieval was mediated by high pressure in a citrate buffer (pH 6.0). Section was blocked with 10% normal goat serum 30min at RT. Then primary antibody (1% BSA) was incubated at 4°C overnight. The primary is detected by a biotinylated secondary antibody and visualized using an HRP conjugated SP system.



Western Blotting

Image 2. Western Blot Positive WB detected in: HepG2 whole cell lysate, Hela whole cell lysate, MCF-7 whole cell lysate, 293 whole cell lysate, Jurkat whole cell lysate, Rat liver tissue, Rat brain tissue, Rat heart tissue, Mouse heart tissue All lanes: DLD antibody at 2 µg/mL Secondary Goat polyclonal to rabbit IgG at 1/50000 dilution Predicted band size: 55, 44, 50 kDa Observed band size: 55 kDa