

Datasheet for ABIN7149970
anti-DPEP1 antibody (AA 23-252)[Go to Product page](#)

2 Images

Overview

Quantity:	100 µL
Target:	DPEP1
Binding Specificity:	AA 23-252
Reactivity:	Human
Host:	Rabbit
Clonality:	Polyclonal
Conjugate:	This DPEP1 antibody is un-conjugated
Application:	Western Blotting (WB), ELISA, Immunofluorescence (IF)

Product Details

Immunogen:	Recombinant Human Dipeptidase 1 protein (23-252AA)
Isotype:	IgG
Cross-Reactivity:	Human
Purification:	>95%, Antigen Affinity purified & Affinity purified

Target Details

Target:	DPEP1
Alternative Name:	DPEP1 (DPEP1 Products)
Background:	Background: Hydrolyzes a wide range of dipeptides. Implicated in the renal metabolism of glutathione and its conjugates. Converts leukotriene D4 to leukotriene E4, it may play an

Target Details

important role in the regulation of leukotriene activity.

Aliases: Dehydropeptidase-I antibody, Dipeptidase 1 (renal) antibody, Dipeptidase 1 antibody, DPEP1 antibody, DPEP1_HUMAN antibody, hRDP antibody, MBD1 antibody, MDP antibody, Microsomal dipeptidase antibody, RDP antibody, Renal dipeptidase antibody

UniProt: [P16444](#)

Pathways: [Inositol Metabolic Process](#)

Application Details

Application Notes: Recommended dilution: WB:1:1000-1:5000, IF:1:50-1:200,

Restrictions: For Research Use only

Handling

Format: Liquid

Buffer: Preservative: 0.03 % Proclin 300
Constituents: 50 % Glycerol, 0.01M PBS, pH 7.4

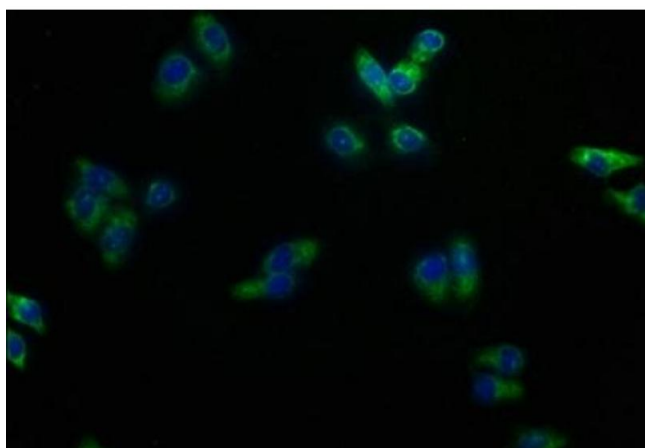
Preservative: ProClin

Precaution of Use: This product contains ProClin: a POISONOUS AND HAZARDOUS SUBSTANCE which should be handled by trained staff only.

Storage: -20 °C,-80 °C

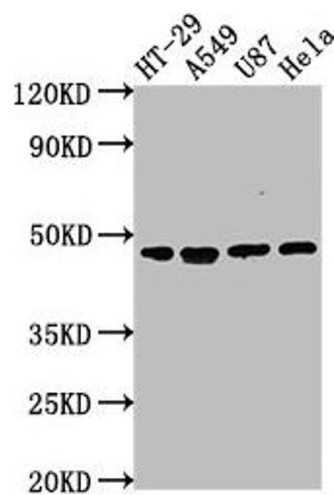
Storage Comment: Upon receipt, store at -20°C or -80°C. Avoid repeated freeze.

Images



Immunofluorescence

Image 1. Immunofluorescence staining of HepG2 cells with ABIN7149970 at 1:100, counter-stained with DAPI. The cells were fixed in 4 % formaldehyde, permeabilized using 0.2 % Triton X-100 and blocked in 10 % normal Goat Serum. The cells were then incubated with the antibody overnight at 4 °C. The secondary antibody was Alexa Fluor 488-conjugated AffiniPure Goat Anti-Rabbit IgG(H+L).



Western Blotting

Image 2. Western Blot Positive WB detected in: HT-29 whole cell lysate, A549 whole cell lysate, U87 whole cell lysate, HeLa whole cell lysate All lanes: DPEP1 antibody at 1:2000 Secondary Goat polyclonal to rabbit IgG at 1/50000 dilution Predicted band size: 46 kDa Observed band size: 46 kDa