

Datasheet for ABIN7150001  
**anti-DPH5 antibody (AA 138-235)**[Go to Product page](#)

## 2 Images

## Overview

Quantity:	100 µL
Target:	DPH5
Binding Specificity:	AA 138-235
Reactivity:	Human
Host:	Rabbit
Clonality:	Polyclonal
Conjugate:	This DPH5 antibody is un-conjugated
Application:	ELISA, Immunofluorescence (IF), Immunohistochemistry (IHC)

## Product Details

Immunogen:	Recombinant Human Diphthine methyl ester synthase protein (138-235AA)
Isotype:	IgG
Cross-Reactivity:	Human
Purification:	>95%, Protein G purified

## Target Details

Target:	DPH5
Alternative Name:	DPH5 ( <a href="#">DPH5 Products</a> )
Background:	Background: S-adenosyl-L-methionine-dependent methyltransferase that catalyzes four methylations of the modified target histidine residue in translation elongation factor 2 (EF-2), to

## Target Details

form an intermediate called diphthine methyl ester. The four successive methylation reactions represent the second step of diphthamide biosynthesis.

Aliases: DPH5 antibody, AD-018 antibody, CGI-30 antibody, HSPC143 antibody, NPD015Diphthine methyl ester synthase antibody, EC 2.1.1.314 antibody, Diphthamide biosynthesis methyltransferase antibody

UniProt: [Q9H2P9](#)

Pathways: [SARS-CoV-2 Protein Interactome](#)

## Application Details

Application Notes: Recommended dilution: IHC:1:500-1:1000, IF:1:50-1:200,

Restrictions: For Research Use only

## Handling

Format: Liquid

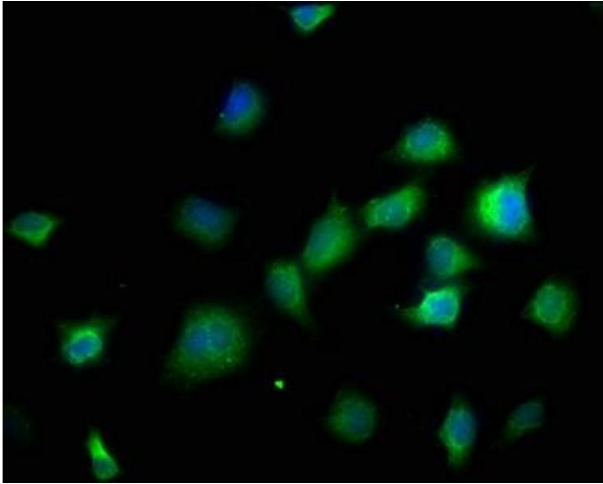
Buffer: Preservative: 0.03 % Proclin 300  
Constituents: 50 % Glycerol, 0.01M PBS, pH 7.4

Preservative: ProClin

Precaution of Use: This product contains ProClin: a POISONOUS AND HAZARDOUS SUBSTANCE which should be handled by trained staff only.

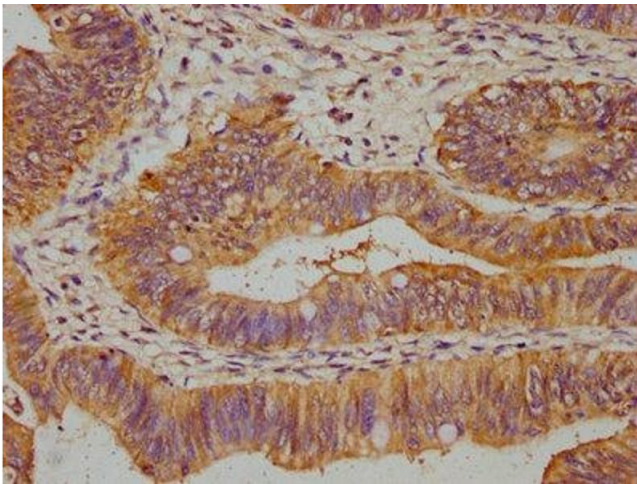
Storage: -20 °C, -80 °C

Storage Comment: Upon receipt, store at -20°C or -80°C. Avoid repeated freeze.



#### Immunofluorescence

**Image 1.** Immunofluorescence staining of SH-SY5Y cells with ABIN7150001 at 1:166, counter-stained with DAPI. The cells were fixed in 4 % formaldehyde, permeabilized using 0.2 % Triton X-100 and blocked in 10 % normal Goat Serum. The cells were then incubated with the antibody overnight at 4 °C. The secondary antibody was Alexa Fluor 488-conjugated AffiniPure Goat Anti-Rabbit IgG(H+L).



#### Immunohistochemistry

**Image 2.** IHC image of ABIN7150001 diluted at 1:500 and staining in paraffin-embedded human colon cancer performed on a Leica Bond™ system. After dewaxing and hydration, antigen retrieval was mediated by high pressure in a citrate buffer (pH 6.0). Section was blocked with 10 % normal goat serum 30 min at RT. Then primary antibody (1 % BSA) was incubated at 4 °C overnight. The primary is detected by a biotinylated secondary antibody and visualized using an HRP conjugated SP system.