

Datasheet for ABIN7150005  
**anti-Diphthamide Biosynthesis 7 (DPH7) (AA 210-325)  
antibody**



[Go to Product page](#)

3 Images

### Overview

Quantity:	100 µg
Target:	Diphthamide Biosynthesis 7 (DPH7)
Binding Specificity:	AA 210-325
Reactivity:	Human
Host:	Rabbit
Clonality:	Polyclonal
Conjugate:	Un-conjugated
Application:	ELISA, Immunohistochemistry (IHC), Immunofluorescence (IF)

### Product Details

Immunogen:	Recombinant Human Diphthine methyltransferase protein (210-325AA)
Isotype:	IgG
Cross-Reactivity:	Human
Purification:	>95%, Protein G purified

### Target Details

Target:	Diphthamide Biosynthesis 7 (DPH7)
Alternative Name:	DPH7 ( <a href="#">DPH7 Products</a> )
Background:	Background: Catalyzes the demethylation of diphthine methyl ester to form diphthine, an intermediate diphthamide biosynthesis, a post-translational modification of histidine which

## Target Details

---

occurs in translation elongation factor 2 (EEF2) which can be ADP-ribosylated by diphtheria toxin and by Pseudomonas exotoxin A (Eta).

Aliases: C9orf112 antibody, Diphthamide biosynthesis 7 antibody, DPH7 antibody, FLJ90634 antibody, OTTHUMP00000022705 antibody, RP11-48C7.3 antibody, RRT2 antibody, WD repeat domain 85 antibody, WD repeat-containing protein 85 antibody, wdr85 antibody, WDR85\_HUMAN antibody

---

UniProt: [Q9BTV6](#)

## Application Details

---

Application Notes: Recommended dilution: IHC:1:20-1:200, IF:1:50-1:200,

Restrictions: For Research Use only

## Handling

---

Format: Liquid

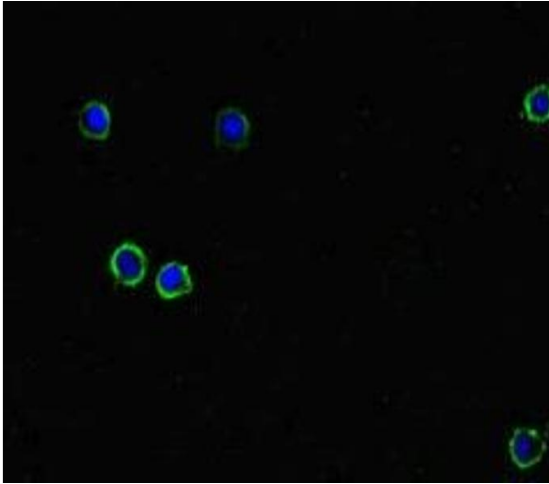
Buffer: Preservative: 0.03 % Proclin 300  
Constituents: 50 % Glycerol, 0.01M PBS, PH 7.4

Preservative: ProClin

Precaution of Use: This product contains ProClin: a POISONOUS AND HAZARDOUS SUBSTANCE which should be handled by trained staff only.

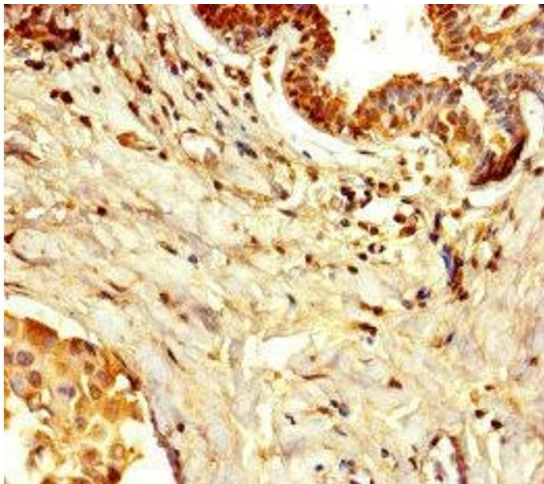
Storage: -20 °C,-80 °C

Storage Comment: Upon receipt, store at -20°C or -80°C. Avoid repeated freeze.



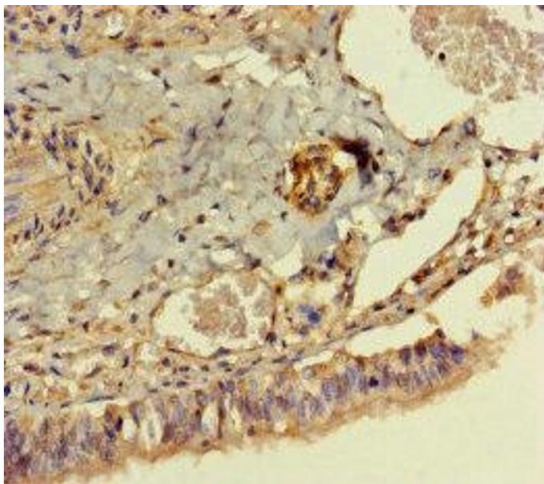
#### Immunofluorescence

**Image 1.** Immunofluorescent analysis of HepG2 cells using ABIN7150005 at dilution of 1:100 and Alexa Fluor 488-conjugated AffiniPure Goat Anti-Rabbit IgG(H+L)



#### Immunohistochemistry

**Image 2.** Immunohistochemistry of paraffin-embedded human breast cancer using ABIN7150005 at dilution of 1:100



#### Immunohistochemistry

**Image 3.** Immunohistochemistry of paraffin-embedded human lung tissue using ABIN7150005 at dilution of 1:100