



[Go to Product page](#)

Datasheet for ABIN7150038
anti-ADAM12 antibody (AA 730-909)

3 Images

Overview

Quantity:	100 µg
Target:	ADAM12
Binding Specificity:	AA 730-909
Reactivity:	Human
Host:	Rabbit
Clonality:	Polyclonal
Conjugate:	This ADAM12 antibody is un-conjugated
Application:	ELISA, Immunohistochemistry (IHC), Immunofluorescence (IF)

Product Details

Immunogen:	Recombinant Human Disintegrin and metalloproteinase domain-containing protein 12 protein (730-909AA)
Isotype:	IgG
Cross-Reactivity:	Human
Purification:	>95%, Protein G purified

Target Details

Target:	ADAM12
Alternative Name:	ADAM12 (ADAM12 Products)
Background:	Background: Involved in skeletal muscle regeneration, specifically at the onset of cell fusion.

Target Details

Also involved in macrophage-derived giant cells (MGC) and osteoclast formation from mononuclear precursors (By similarity).

Aliases: A disintegrin and metalloproteinase domain 12 antibody, ADA12_HUMAN antibody, ADAM 12 antibody, ADAM metalloproteinase domain 12 antibody, ADAM12 antibody, CAR10 antibody, Disintegrin and metalloproteinase domain-containing protein 12 antibody, MCMP antibody, MCMPLtna antibody, Meltrin alpha antibody, Meltrin-alpha antibody, Metalloprotease disintegrin 12 transmembrane antibody, MLTN antibody, MLTNA antibody, OTTHUMP00000046766 antibody

UniProt: [O43184](#)

Pathways: [EGFR Signaling Pathway](#)

Application Details

Application Notes: Recommended dilution: IHC:1:20-1:200, IF:1:50-1:200,

Restrictions: For Research Use only

Handling

Format: Liquid

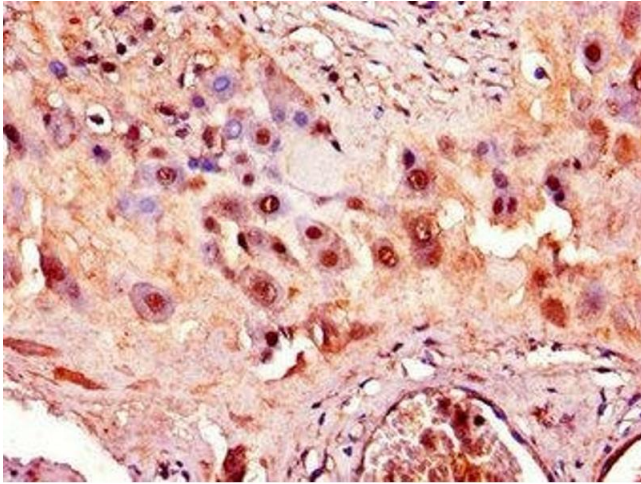
Buffer: Preservative: 0.03 % Proclin 300
Constituents: 50 % Glycerol, 0.01M PBS, PH 7.4

Preservative: ProClin

Precaution of Use: This product contains ProClin: a POISONOUS AND HAZARDOUS SUBSTANCE which should be handled by trained staff only.

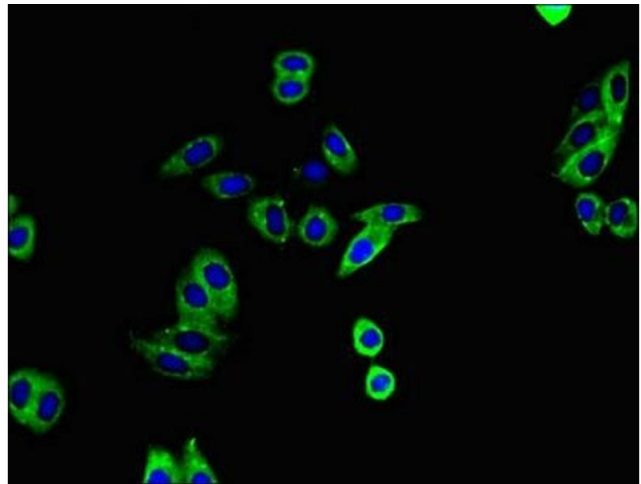
Storage: -20 °C,-80 °C

Storage Comment: Upon receipt, store at -20°C or -80°C. Avoid repeated freeze.



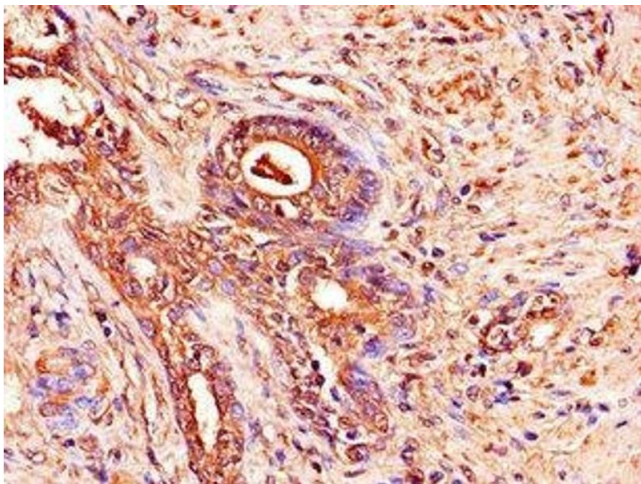
Immunohistochemistry

Image 1. Immunohistochemistry of paraffin-embedded human placenta tissue using ABIN7150038 at dilution of 1:100



Immunofluorescence

Image 2. Immunofluorescent analysis of HepG2 cells using ABIN7150038 at dilution of 1:100 and Alexa Fluor 488-conjugated AffiniPure Goat Anti-Rabbit IgG(H+L)



Immunohistochemistry

Image 3. Immunohistochemistry of paraffin-embedded human prostate cancer using ABIN7150038 at dilution of 1:100