

Datasheet for ABIN7150042  
**anti-ADAM15 antibody (AA 207-452)**[Go to Product page](#)

## 1 Image

## Overview

Quantity:	100 µg
Target:	ADAM15
Binding Specificity:	AA 207-452
Reactivity:	Human
Host:	Rabbit
Clonality:	Polyclonal
Conjugate:	This ADAM15 antibody is un-conjugated
Application:	ELISA, Immunohistochemistry (IHC)

## Product Details

Immunogen:	Recombinant Human Disintegrin and metalloproteinase domain-containing protein 15 protein (207-452AA)
Isotype:	IgG
Cross-Reactivity:	Human
Purification:	>95%, Protein G purified

## Target Details

Target:	ADAM15
Alternative Name:	ADAM15 ( <a href="#">ADAM15 Products</a> )
Background:	Background: Active metalloproteinase with gelatinolytic and collagenolytic activity. Plays a role

## Target Details

in the wound healing process. Mediates both heterotypic intraepithelial cell/T-cell interactions and homotypic T-cell aggregation. Inhibits beta-1 integrin-mediated cell adhesion and migration of airway smooth muscle cells. Suppresses cell motility on or towards fibronectin possibly by driving alpha-v/beta-1 integrin (ITAGV-ITGB1) cell surface expression via ERK1/2 inactivation. Cleaves E-cadherin in response to growth factor deprivation. Plays a role in glomerular cell migration. Plays a role in pathological neovascularization. May play a role in cartilage remodeling. May be proteolytically processed, during sperm epididymal maturation and the acrosome reaction. May play a role in sperm-egg binding through its disintegrin domain.

Aliases: A disintegrin and metalloproteinase domain 15 (metargidin) antibody, A disintegrin and metalloproteinase domain 15 antibody, ADA15\_HUMAN antibody, ADAM 15 antibody, ADAM metalloproteinase domain 15 antibody, Adam15 antibody, and cysteine-rich protein 15 antibody, Disintegrin and metalloproteinase domain-containing protein 15 antibody, disintegrin-like antibody, EC 3.4.24. antibody, MDC 15 antibody, MDC-15 antibody, MDC15 antibody, Metalloprotease RGD disintegrin protein antibody, Metalloproteinase like disintegrin like and cysteine rich protein 15 antibody, Metalloproteinase-like antibody, Metargidin antibody

UniProt: [Q13444](#)

## Application Details

Application Notes: Recommended dilution: IHC:1:20-1:200,

Restrictions: For Research Use only

## Handling

Format: Liquid

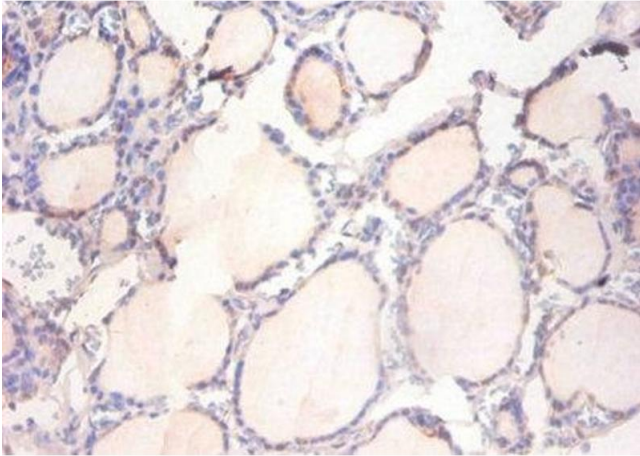
Buffer: Preservative: 0.03 % Proclin 300  
Constituents: 50 % Glycerol, 0.01M PBS, PH 7.4

Preservative: ProClin

Precaution of Use: This product contains ProClin: a POISONOUS AND HAZARDOUS SUBSTANCE which should be handled by trained staff only.

Storage: -20 °C,-80 °C

Storage Comment: Upon receipt, store at -20°C or -80°C. Avoid repeated freeze.



#### Immunohistochemistry

**Image 1.** Immunohistochemistry of paraffin-embedded human thyroid tissue using ABIN7150042 at dilution of 1:100