

Datasheet for ABIN7150062  
**anti-ADAM8 antibody (AA 677-824)**[Go to Product page](#)

## 4 Images

## Overview

|                      |   |
|----------------------|---|
| Quantity:            | 100 µg  |
| Target:              | ADAM8   |
| Binding Specificity: | AA 677-824  |
| Reactivity:          | Human   |
| Host:                | Rabbit  |
| Clonality:           | Polyclonal  |
| Conjugate:           | This ADAM8 antibody is un-conjugated  |
| Application:         | Western Blotting (WB), ELISA, Immunohistochemistry (IHC), Immunofluorescence (IF) |

## Product Details

|                   |   |
|-------------------|---|
| Immunogen:        | Recombinant Human Disintegrin and metalloproteinase domain-containing protein 8 protein (677-824AA) |
| Isotype:          | IgG   |
| Cross-Reactivity: | Human, Mouse  |
| Purification:     | >95%, Protein G purified  |

## Target Details

|                   |  |
|-------------------|--|
| Target:           | ADAM8  |
| Alternative Name: | ADAM8 ( <a href="#">ADAM8 Products</a> )                         |
| Background:       | Background: Possible involvement in extravasation of leukocytes. |

## Target Details

Aliases: A Disintegrin And Metalloproteinase domain 8 antibody, ADAM 8 antibody, ADAM 8 precursor antibody, ADAM metalloproteinase domain 8 antibody, Adam8 antibody, ADAM8 protein antibody, ADAM8\_HUMAN antibody, CD 156 antibody, CD156 antibody, CD156a antibody, CD156a antigen antibody, Cell surface antigen MS2 antibody, Disintegrin and metalloproteinase domain-containing protein 8 antibody, Human leukocyte differentiation antigen antibody, Macrophage cysteine rich glycoprotein antibody, MGC134985 antibody, MS 2 antibody, MS2 antibody

UniProt: [P78325](#)

Pathways: [Activation of Innate immune Response](#), [M Phase](#)

## Application Details

Application Notes: Recommended dilution: WB:1:500-1:5000, IHC:1:200-1:500, IF:1:50-1:200,

Restrictions: For Research Use only

## Handling

Format: Liquid

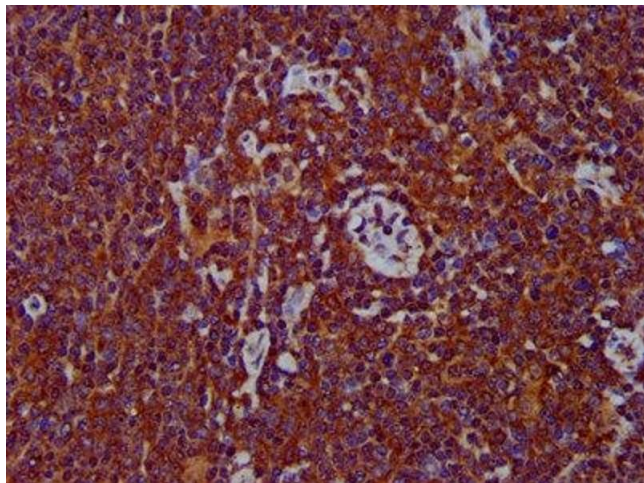
Buffer: Preservative: 0.03 % Proclin 300  
Constituents: 50 % Glycerol, 0.01M PBS, pH 7.4

Preservative: ProClin

Precaution of Use: This product contains ProClin: a POISONOUS AND HAZARDOUS SUBSTANCE which should be handled by trained staff only.

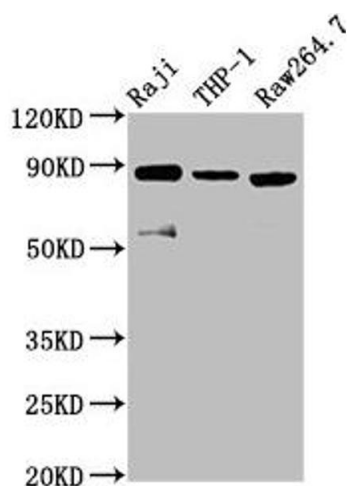
Storage: -20 °C,-80 °C

Storage Comment: Upon receipt, store at -20°C or -80°C. Avoid repeated freeze.



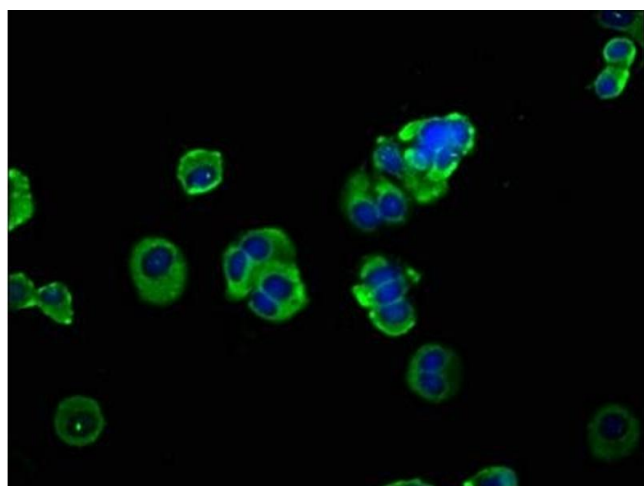
### Immunohistochemistry

**Image 1.** IHC image of ABIN7150062 diluted at 1:400 and staining in paraffin-embedded human lymph node tissue performed on a Leica Bond™ system. After dewaxing and hydration, antigen retrieval was mediated by high pressure in a citrate buffer (pH 6.0). Section was blocked with 10% normal goat serum 30min at RT. Then primary antibody (1% BSA) was incubated at 4°C overnight. The primary is detected by a biotinylated secondary antibody and visualized using an HRP conjugated SP system.



### Western Blotting

**Image 2.** Western Blot Positive WB detected in: Raji whole cell lysate, THP-1 whole cell lysate, RAW264.7 whole cell lysate. All lanes: ADAM8 antibody at 3.8 µg/mL. Secondary Goat polyclonal to rabbit IgG at 1/50000 dilution. Predicted band size: 89, 79, 81 kDa. Observed band size: 89 kDa.



### Immunofluorescence

**Image 3.** Immunofluorescence staining of MCF-7 cells with ABIN7150062 at 1:133, counter-stained with DAPI. The cells were fixed in 4% formaldehyde, permeabilized using 0.2% Triton X-100 and blocked in 10% normal Goat Serum. The cells were then incubated with the antibody overnight at 4°C. The secondary antibody was Alexa Fluor 488-conjugated AffiniPure Goat Anti-Rabbit IgG(H+L).

Please check the [product details page](#) for more images. Overall 4 images are available for ABIN7150062.