



Datasheet for ABIN7150068  
**anti-DLG1 antibody (AA 662-773)**



[Go to Product page](#)

2 Images

Overview

Quantity:	100 µg
Target:	DLG1
Binding Specificity:	AA 662-773
Reactivity:	Human
Host:	Rabbit
Clonality:	Polyclonal
Conjugate:	This DLG1 antibody is un-conjugated
Application:	ELISA, Immunohistochemistry (IHC), Immunofluorescence (IF)

Product Details

Immunogen:	Recombinant Human Disks large homolog 1 protein (662-773AA)
Isotype:	IgG
Cross-Reactivity:	Human
Purification:	>95%, Protein G purified

Target Details

Target:	DLG1
Alternative Name:	DLG1 ( <a href="#">DLG1 Products</a> )
Background:	Background: Essential multidomain scaffolding protein required for normal development (By similarity). Recruits channels, receptors and signaling molecules to discrete plasma membrane

## Target Details

---

domains in polarized cells. May play a role in adherens junction assembly, signal transduction, cell proliferation, synaptogenesis and lymphocyte activation. Regulates the excitability of cardiac myocytes by modulating the functional expression of Kv4 channels. Functional regulator of Kv1.5 channel.

Aliases: Discs large homolog 1 antibody, discs large, Drosophila, homolog of, 1 antibody, discs, large homolog 1 (Drosophila) antibody, Disks large homolog 1 antibody, dJ1061C18.1.1 antibody, DKFZp761P0818 antibody, DKFZp781B0426 antibody, DLG 1 antibody, DLG1 antibody, DLG1\_HUMAN antibody, DLGH 1 antibody, DLGH1 antibody, hDlg antibody, Presynaptic protein SAP97 antibody, SAP 97 antibody, SAP-97 antibody, SAP97 antibody, Synapse associated protein 97 antibody, Synapse-associated protein 97 antibody

---

UniProt: [Q12959](#)

---

Pathways: [Regulation of Actin Filament Polymerization](#), [Cell-Cell Junction Organization](#), [Production of Molecular Mediator of Immune Response](#)

## Application Details

---

Application Notes: Recommended dilution: IHC:1:20-1:200, IF:1:50-1:200,

---

Restrictions: For Research Use only

## Handling

---

Format: Liquid

---

Buffer: Preservative: 0.03 % Proclin 300  
Constituents: 50 % Glycerol, 0.01M PBS, pH 7.4

---

Preservative: ProClin

---

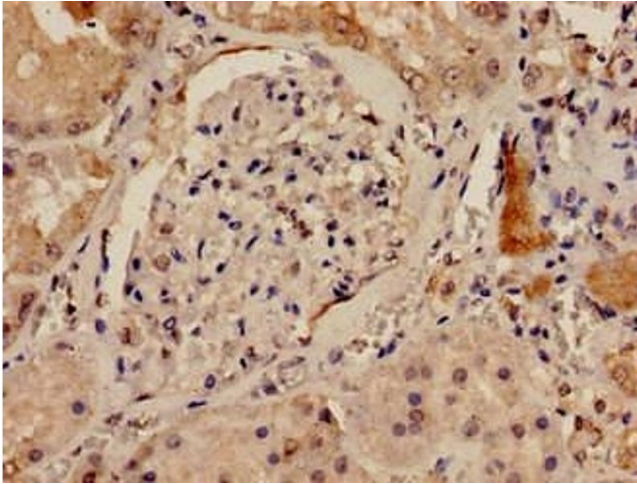
Precaution of Use: This product contains ProClin: a POISONOUS AND HAZARDOUS SUBSTANCE which should be handled by trained staff only.

---

Storage: -20 °C,-80 °C

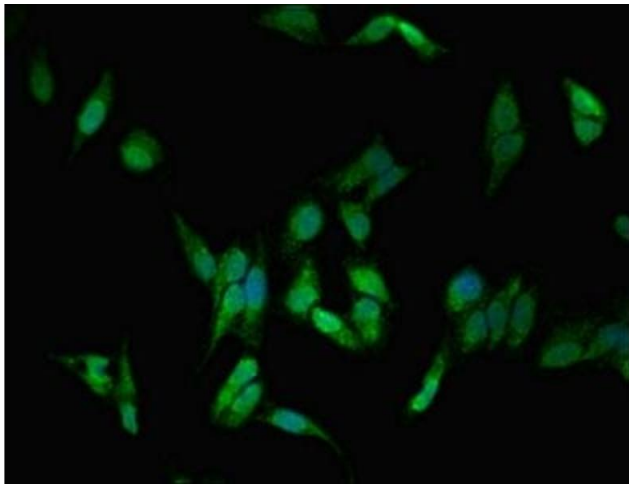
---

Storage Comment: Upon receipt, store at -20°C or -80°C. Avoid repeated freeze.



### Immunohistochemistry

**Image 1.** Immunohistochemistry analysis of human kidney tissue using ABIN7150068 at dilution of 1:100



### Immunofluorescence

**Image 2.** Immunofluorescent analysis of HeLa cells using ABIN7150068 at dilution of 1:100 and Alexa Fluor 488-conjugated AffiniPure Goat Anti-Rabbit IgG(H+L)