

Datasheet for ABIN7150152

anti-APOBEC3D antibody (AA 250-371)**3** Images[Go to Product page](#)

Overview

Quantity:	100 µg
Target:	APOBEC3D
Binding Specificity:	AA 250-371
Reactivity:	Human
Host:	Rabbit
Clonality:	Polyclonal
Conjugate:	This APOBEC3D antibody is un-conjugated
Application:	ELISA, Immunohistochemistry (IHC), Immunofluorescence (IF)

Product Details

Immunogen:	Recombinant Human DNA dC->dU-editing enzyme APOBEC-3D protein (250-371AA)
Isotype:	IgG
Cross-Reactivity:	Human
Purification:	>95%, Protein G purified

Target Details

Target:	APOBEC3D
Alternative Name:	APOBEC3D (APOBEC3D Products)
Background:	Background: DNA deaminase (cytidine deaminase) which acts as an inhibitor of retrovirus replication and retrotransposon mobility via deaminase-dependent and -independent

Target Details

mechanisms. Exhibits antiviral activity against vif-deficient HIV-1. After the penetration of retroviral nucleocapsids into target cells of infection and the initiation of reverse transcription, it can induce the conversion of cytosine to uracil in the minus-sense single-strand viral DNA, leading to G-to-A hypermutations in the subsequent plus-strand viral DNA. The resultant detrimental levels of mutations in the proviral genome, along with a deamination-independent mechanism that works prior to the proviral integration, together exert efficient antiretroviral effects in infected target cells. Selectively targets single-stranded DNA and does not deaminate double-stranded DNA or single-or double-stranded RNA. May inhibit the mobility of LTR and non-LTR retrotransposons.

Aliases: A3D antibody, ABC3D_HUMAN antibody, APOBEC3D antibody, APOBEC3DE antibody, APOBEC3E antibody, Apolipoprotein B mRNA editing enzyme catalytic polypeptide like 3D antibody, Apolipoprotein B mRNA editing enzyme catalytic polypeptide like 3E pseudogene antibody, ARP6 antibody, bK150C2.9 antibody, BK150C2.9 protein antibody, DNA dC >dU editing enzyme APOBEC 3D antibody, DNA dC->dU-editing enzyme APOBEC-3D antibody, hCG_41704 antibody, HCG41704, isoform CRA_b antibody, Probable DNA dC->dU-editing enzyme APOBEC-3D antibody

UniProt: [Q96AK3](#)

Application Details

Application Notes: Recommended dilution: IHC:1:20-1:200, IF:1:50-1:200,

Restrictions: For Research Use only

Handling

Format: Liquid

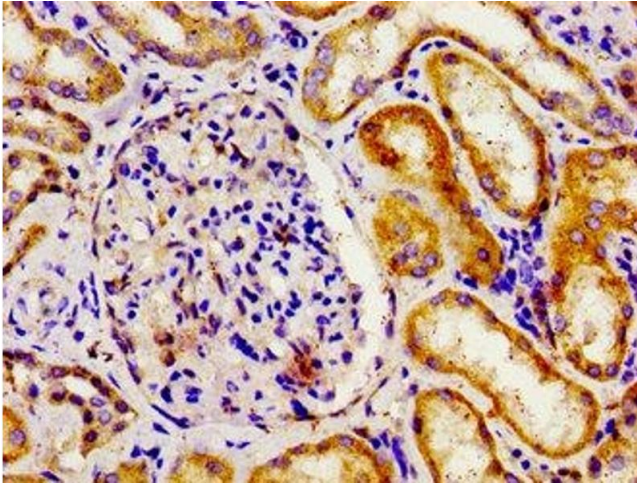
Buffer: Preservative: 0.03 % Proclin 300
Constituents: 50 % Glycerol, 0.01M PBS, pH 7.4

Preservative: ProClin

Precaution of Use: This product contains ProClin: a POISONOUS AND HAZARDOUS SUBSTANCE which should be handled by trained staff only.

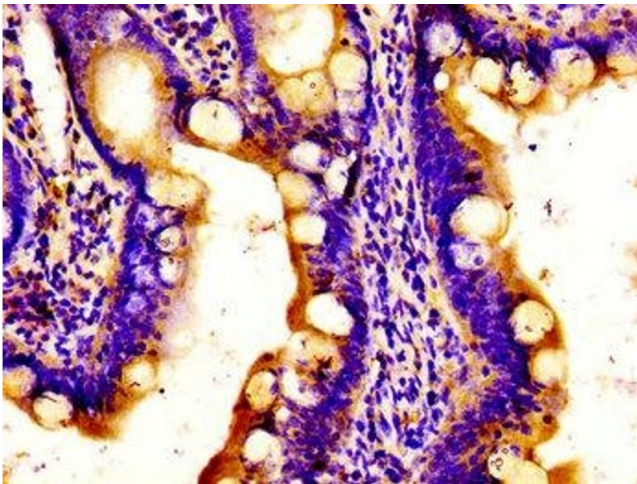
Storage: -20 °C,-80 °C

Storage Comment: Upon receipt, store at -20°C or -80°C. Avoid repeated freeze.



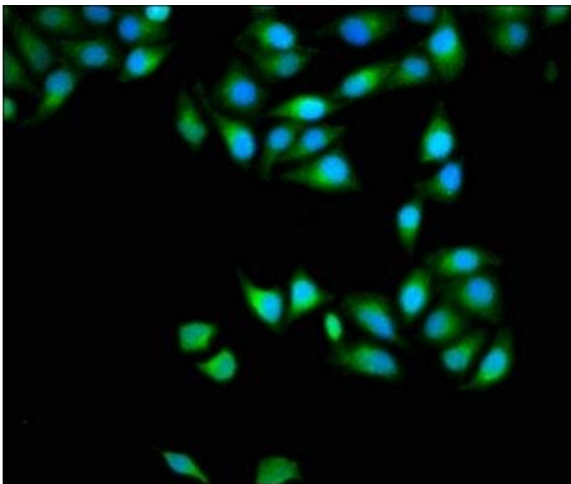
Immunohistochemistry

Image 1. Immunohistochemistry of paraffin-embedded human kidney tissue using ABIN7150152 at dilution of 1:100



Immunohistochemistry

Image 2. Immunohistochemistry of paraffin-embedded human small intestine tissue using ABIN7150152 at dilution of 1:100



Immunofluorescence

Image 3. Immunofluorescence staining of HeLa cells with ABIN7150152 at 1:133, counter-stained with DAPI. The cells were fixed in 4% formaldehyde, permeabilized using 0.2% Triton X-100 and blocked in 10% normal Goat Serum. The cells were then incubated with the antibody overnight at 4°C. The secondary antibody was Alexa Fluor 488-conjugated AffiniPure Goat Anti-Rabbit IgG(H+L).