



[Go to Product page](#)

Datasheet for ABIN7150209
anti-MSH6 antibody (AA 1-400)

3 Images

Overview

Quantity:	100 µg
Target:	MSH6
Binding Specificity:	AA 1-400
Reactivity:	Human
Host:	Rabbit
Clonality:	Polyclonal
Conjugate:	This MSH6 antibody is un-conjugated
Application:	Immunohistochemistry (IHC), ELISA, Immunofluorescence (IF)

Product Details

Immunogen:	Recombinant Human DNA mismatch repair protein Msh6 protein (1-400AA)
Isotype:	IgG
Cross-Reactivity:	Human
Purification:	>95%, Protein G purified

Target Details

Target:	MSH6
Alternative Name:	MSH6 (MSH6 Products)
Background:	Background: Component of the post-replicative DNA mismatch repair system (MMR). Heterodimerizes with MSH2 to form MutS alpha, which binds to DNA mismatches thereby

Target Details

initiating DNA repair. When bound, MutS alpha bends the DNA helix and shields approximately 20 base pairs, and recognizes single base mismatches and dinucleotide insertion-deletion loops (IDL) in the DNA. After mismatch binding, forms a ternary complex with the MutL alpha heterodimer, which is thought to be responsible for directing the downstream MMR events, including strand discrimination, excision, and resynthesis. ATP binding and hydrolysis play a pivotal role in mismatch repair functions. The ATPase activity associated with MutS alpha regulates binding similar to a molecular switch: mismatched DNA provokes ADP→ATP exchange, resulting in a discernible conformational transition that converts MutS alpha into a sliding clamp capable of hydrolysis-independent diffusion along the DNA backbone. This transition is crucial for mismatch repair. MutS alpha may also play a role in DNA homologous recombination repair. Recruited on chromatin in G1 and early S phase via its PWWP domain that specifically binds trimethylated 'Lys-36' of histone H3 (H3K36me3): early recruitment to chromatin to be replicated allowing a quick identification of mismatch repair to initiate the DNA mismatch repair reaction.

Aliases: DNA mismatch repair protein Msh6 antibody, G/T mismatch binding protein antibody, G/T mismatch-binding protein antibody, GTBP antibody, GTMBP antibody, hMSH6 antibody, HNPCC 5 antibody, HNPCC5 antibody, HSAP antibody, MSH 6 antibody, MSH6 antibody, MSH6_HUMAN antibody, mutS (E. coli) homolog 6 antibody, MutS alpha 160 kDa subunit antibody, MutS homolog 6 (E. coli) antibody, mutS homolog 6 antibody, MutS-alpha 160 kDa subunit antibody, p160 antibody, Sperm associated protein antibody

UniProt: [P52701](#)

Pathways: [DNA Damage Repair](#), [Chromatin Binding](#), [Production of Molecular Mediator of Immune Response](#)

Application Details

Application Notes: Recommended dilution: IHC:1:20-1:200, IF:1:50-1:200,

Restrictions: For Research Use only

Handling

Format: Liquid

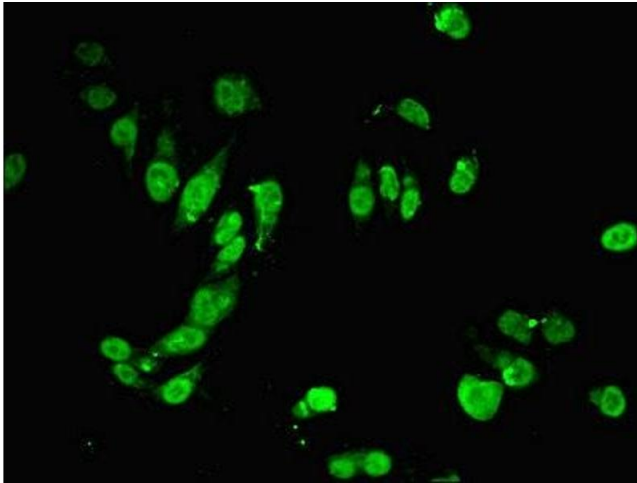
Buffer: Preservative: 0.03 % Proclin 300
Constituents: 50 % Glycerol, 0.01M PBS, PH 7.4

Preservative: ProClin

Handling

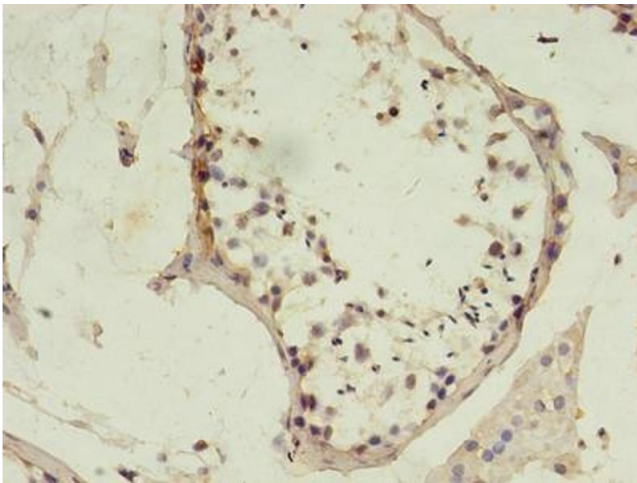
Precaution of Use:	This product contains ProClin: a POISONOUS AND HAZARDOUS SUBSTANCE which should be handled by trained staff only.
Storage:	-20 °C,-80 °C
Storage Comment:	Upon receipt, store at -20°C or -80°C. Avoid repeated freeze.

Images



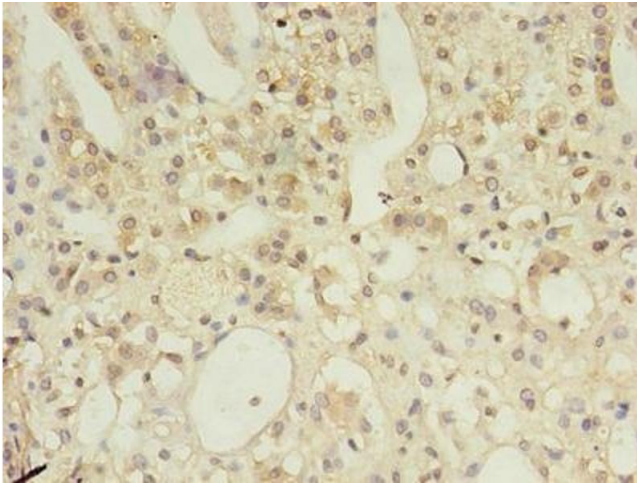
Immunofluorescence

Image 1. Immunofluorescent analysis of HeLa cells using ABIN7150209 at dilution of 1:100 and Alexa Fluor 488-conjugated AffiniPure Goat Anti-Rabbit IgG(H+L)



Immunohistochemistry

Image 2. Immunohistochemistry of paraffin-embedded human testis tissue using ABIN7150209 at dilution of 1:100



Immunohistochemistry

Image 3. Immunohistochemistry of paraffin-embedded human adrenal gland tissue using ABIN7150209 at dilution of 1:100