



[Go to Product page](#)

Datasheet for ABIN7150223  
**anti-POLB antibody (AA 1-300)**

3 Images

### Overview

Quantity:	100 µg
Target:	POLB
Binding Specificity:	AA 1-300
Reactivity:	Human
Host:	Rabbit
Clonality:	Polyclonal
Conjugate:	This POLB antibody is un-conjugated
Application:	Western Blotting (WB), Immunohistochemistry (IHC), ELISA

### Product Details

Immunogen:	Recombinant Human DNA polymerase beta protein (1-300AA)
Isotype:	IgG
Cross-Reactivity:	Human
Purification:	>95%, Protein G purified

### Target Details

Target:	POLB
Alternative Name:	POLB ( <a href="#">POLB Products</a> )
Background:	Background: Repair polymerase that plays a key role in base-excision repair. Has 5' deoxyribose-5-phosphate lyase (dRP lyase) activity that removes the 5' sugar phosphate and

## Target Details

---

also acts as a DNA polymerase that adds one nucleotide to the 3' end of the arising single-nucleotide gap. Conducts gap-filling DNA synthesis in a stepwise distributive fashion rather than in a processive fashion as for other DNA polymerases.

Aliases: DNA directed DNA polymerase beta antibody, DNA pol beta antibody, DNA polymerase beta antibody, DNA polymerase beta subunit antibody, DPOLB\_HUMAN antibody, MGC125976 antibody, Pol B antibody, Pol beta antibody, POLB antibody, Polymerase (DNA directed) beta antibody

---

UniProt: [P06746](#)

---

Pathways: [DNA Damage Repair](#)

## Application Details

---

Application Notes: Recommended dilution: WB:1:1000-1:5000, IHC:1:20-1:200,

---

Restrictions: For Research Use only

## Handling

---

Format: Liquid

---

Buffer: Preservative: 0.03 % Proclin 300  
Constituents: 50 % Glycerol, 0.01M PBS, PH 7.4

---

Preservative: ProClin

---

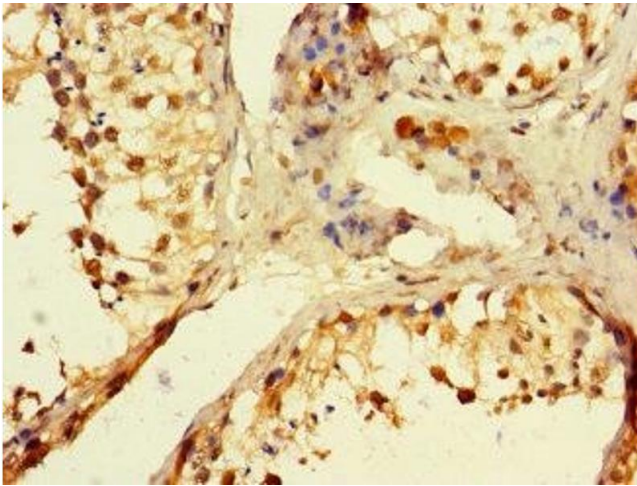
Precaution of Use: This product contains ProClin: a POISONOUS AND HAZARDOUS SUBSTANCE which should be handled by trained staff only.

---

Storage: -20 °C,-80 °C

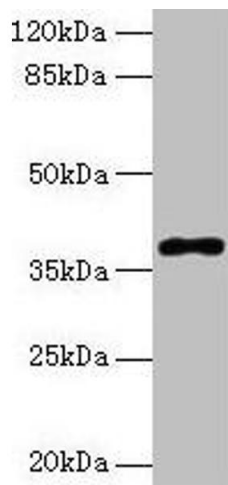
---

Storage Comment: Upon receipt, store at -20°C or -80°C. Avoid repeated freeze.



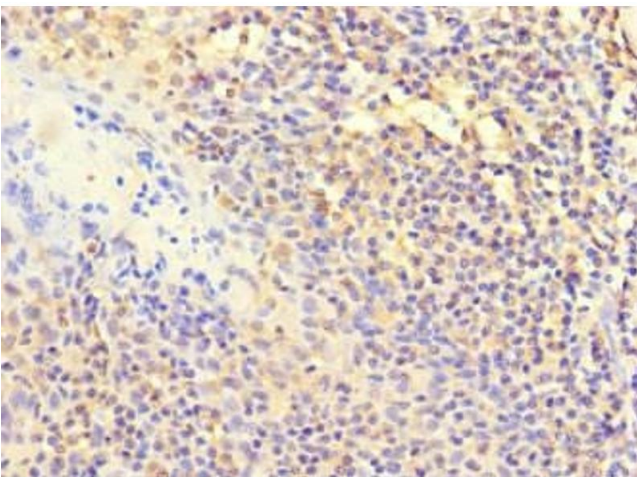
### Immunohistochemistry

**Image 1.** Immunohistochemistry of paraffin-embedded human testis tissue using ABIN7150223 at dilution of 1:100



### Western Blotting

**Image 2.** Western blot All lanes: POLB antibody at 8 µg/mL + Colo320 whole cell lysate Secondary Goat polyclonal to rabbit IgG at 1/10000 dilution Predicted band size: 39 kDa Observed band size: 39 kDa



### Immunohistochemistry

**Image 3.** Immunohistochemistry of paraffin-embedded human tonsil tissue using ABIN7150223 at dilution of 1:100