

Datasheet for ABIN7150243
anti-POLE4 antibody (AA 8-117)[Go to Product page](#)

2 Images

Overview

Quantity:	100 µg
Target:	POLE4
Binding Specificity:	AA 8-117
Reactivity:	Human
Host:	Rabbit
Clonality:	Polyclonal
Conjugate:	This POLE4 antibody is un-conjugated
Application:	ELISA, Immunohistochemistry (IHC)

Product Details

Immunogen:	Recombinant Human DNA polymerase epsilon subunit 4 protein (8-117AA)
Isotype:	IgG
Cross-Reactivity:	Human
Purification:	>95%, Protein G purified

Target Details

Target:	POLE4
Alternative Name:	POLE4 (POLE4 Products)
Background:	Background: May play a role in allowing polymerase epsilon to carry out its replication and/or repair function.

Target Details

Aliases: DNA polymerase epsilon 4 accessory subunit antibody, DNA polymerase epsilon p12 subunit antibody, DNA polymerase epsilon subunit 4 antibody, DNA polymerase epsilon subunit p12 antibody, DNA polymerase II subunit 4 antibody, DPOE4_HUMAN antibody, p12 antibody, POLE4 antibody, Polymerase (DNA directed) epsilon 4 (p12 subunit) antibody, Polymerase (DNA directed) epsilon 4 antibody, YHHQ1 antibody

UniProt: [Q9NR33](#)

Pathways: [DNA Damage Repair](#)

Application Details

Application Notes: Recommended dilution: IHC:1:200-1:500,

Restrictions: For Research Use only

Handling

Format: Liquid

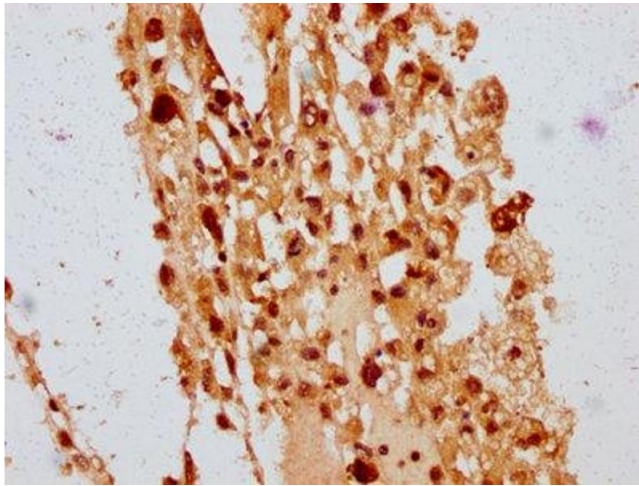
Buffer: Preservative: 0.03 % Proclin 300
Constituents: 50 % Glycerol, 0.01M PBS, pH 7.4

Preservative: ProClin

Precaution of Use: This product contains ProClin: a POISONOUS AND HAZARDOUS SUBSTANCE which should be handled by trained staff only.

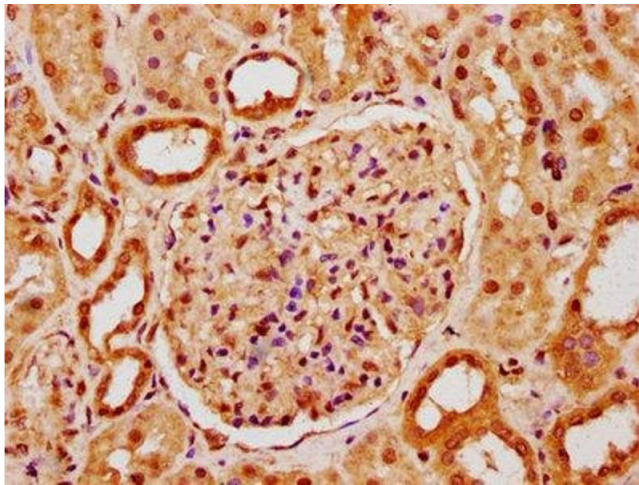
Storage: -20 °C, -80 °C

Storage Comment: Upon receipt, store at -20°C or -80°C. Avoid repeated freeze.



Immunohistochemistry

Image 1. IHC image of ABIN7150243 diluted at 1:400 and staining in paraffin-embedded human melanoma performed on a Leica Bond™ system. After dewaxing and hydration, antigen retrieval was mediated by high pressure in a citrate buffer (pH 6.0). Section was blocked with 10% normal goat serum 30min at RT. Then primary antibody (1% BSA) was incubated at 4°C overnight. The primary is detected by a biotinylated secondary antibody and visualized using an HRP conjugated SP system.



Immunohistochemistry

Image 2. IHC image of ABIN7150243 diluted at 1:400 and staining in paraffin-embedded human kidney tissue performed on a Leica Bond™ system. After dewaxing and hydration, antigen retrieval was mediated by high pressure in a citrate buffer (pH 6.0). Section was blocked with 10% normal goat serum 30min at RT. Then primary antibody (1% BSA) was incubated at 4°C overnight. The primary is detected by a biotinylated secondary antibody and visualized using an HRP conjugated SP system.