

Datasheet for ABIN7150271  
**anti-PRIM1 antibody (AA 1-420)**



[Go to Product page](#)

1 Image

## Overview

Quantity:	100 µg
Target:	PRIM1
Binding Specificity:	AA 1-420
Reactivity:	Human
Host:	Rabbit
Clonality:	Polyclonal
Conjugate:	This PRIM1 antibody is un-conjugated
Application:	ELISA, Immunofluorescence (IF)

## Product Details

Immunogen:	Recombinant Human DNA primase small subunit protein (1-420AA)
Isotype:	IgG
Cross-Reactivity:	Human
Purification:	>95%, Protein G purified

## Target Details

Target:	PRIM1
Alternative Name:	PRIM1 ( <a href="#">PRIM1 Products</a> )
Background:	Background: DNA primase is the polymerase that synthesizes small RNA primers for the Okazaki fragments made during discontinuous DNA replication.

## Target Details

Aliases: AI324982 antibody, DNA primase 49 kDa subunit antibody, DNA primase small subunit antibody, MGC107288 antibody, MGC109113 antibody, p49 antibody, PRI1\_HUMAN antibody, PRIM1 antibody

UniProt: [P49642](#)

Pathways: [Telomere Maintenance](#), [Mitotic G1-G1/S Phases](#), [DNA Replication](#), [Synthesis of DNA](#), [SARS-CoV-2 Protein Interactome](#)

## Application Details

Application Notes: Recommended dilution: IF:1:50-1:200,

Restrictions: For Research Use only

## Handling

Format: Liquid

Buffer: Preservative: 0.03 % Proclin 300  
Constituents: 50 % Glycerol, 0.01M PBS, PH 7.4

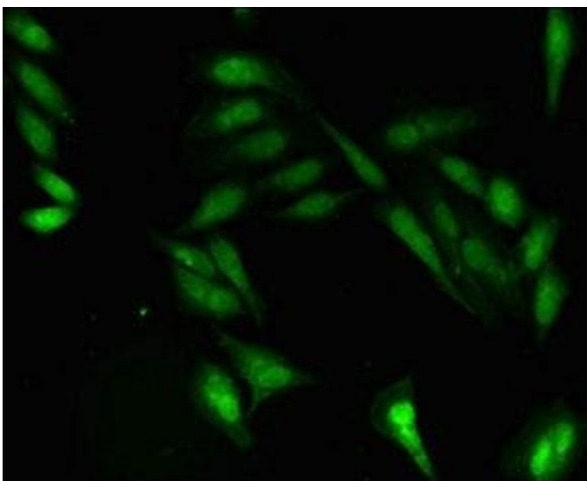
Preservative: ProClin

Precaution of Use: This product contains ProClin: a POISONOUS AND HAZARDOUS SUBSTANCE which should be handled by trained staff only.

Storage: -20 °C,-80 °C

Storage Comment: Upon receipt, store at -20°C or -80°C. Avoid repeated freeze.

## Images



### Immunofluorescence

**Image 1.** Immunofluorescent analysis of HeLa cells using ABIN7150271 at dilution of 1:100 and Alexa Fluor 488-conjugated AffiniPure Goat Anti-Rabbit IgG(H+L)