

Datasheet for ABIN7150291
anti-RAD51D antibody (AA 1-328)[Go to Product page](#)

2 Images

Overview

Quantity:	100 µL
Target:	RAD51D
Binding Specificity:	AA 1-328
Reactivity:	Human
Host:	Rabbit
Clonality:	Polyclonal
Conjugate:	This RAD51D antibody is un-conjugated
Application:	Western Blotting (WB), ELISA, Immunohistochemistry (IHC)

Product Details

Immunogen:	Recombinant Human DNA repair protein RAD51 homolog 4 protein (1-328AA)
Isotype:	IgG
Cross-Reactivity:	Human
Purification:	Antigen Affinity Purified

Target Details

Target:	RAD51D
Alternative Name:	RAD51D (RAD51D Products)
Background:	Background: Involved in the homologous recombination repair (HRR) pathway of double-stranded DNA breaks arising during DNA replication or induced by DNA-damaging agents. Bind

Target Details

to single-stranded DNA (ssDNA) and has DNA-dependent ATPase activity. Part of the Rad21 paralog protein complex BCDX2 which acts in the BRCA1-BRCA2-dependent HR pathway. Upon DNA damage, BCDX2 acts downstream of BRCA2 recruitment and upstream of RAD51 recruitment. BCDX2 binds predominantly to the intersection of the four duplex arms of the Holliday junction and to junction of replication forks. The BCDX2 complex was originally reported to bind single-stranded DNA, single-stranded gaps in duplex DNA and specifically to nicks in duplex DNA. Involved in telomere maintenance. The BCDX2 subcomplex XRCC2:RAD51D can stimulate Holliday junction resolution by BLM.

Aliases: BROVCA4 antibody, DNA repair protein RAD51 homolog 4 antibody, HsTRAD antibody, OTTHUMP00000163851 antibody, OTTHUMP00000163852 antibody, OTTHUMP00000163853 antibody, R51H3 antibody, RA51D_HUMAN antibody, RAD51 homolog D (S. cerevisiae) antibody, RAD51 homolog D antibody, RAD51 like 3 (S. cerevisiae) antibody, RAD51 paralog D antibody, RAD51, S. cerevisiae, homolog of, D antibody, RAD51-like protein 3 antibody, Rad51I3 antibody, Recombination repair protein antibody, S. cerevisiae RAD51-like 3 antibody, TRAD antibody

UniProt: [O75771](#)

Application Details

Application Notes: Recommended dilution: WB:1:200-1:1000, IHC:1:20-1:200,

Restrictions: For Research Use only

Handling

Format: Liquid

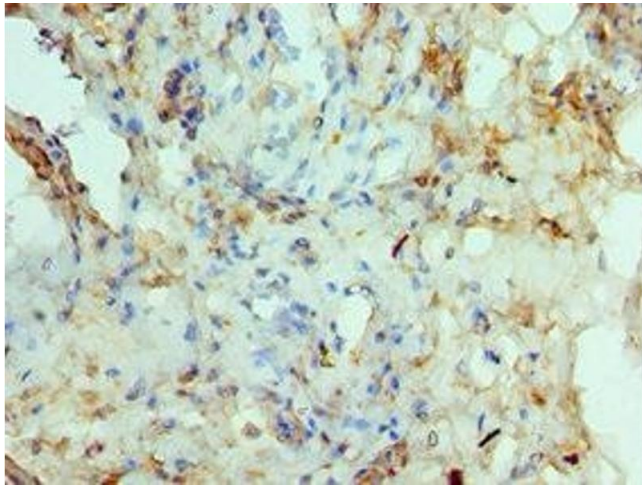
Buffer: PBS with 0.02 % sodium azide, 50 % glycerol, pH 7.3.

Preservative: Sodium azide

Precaution of Use: This product contains Sodium azide: a POISONOUS AND HAZARDOUS SUBSTANCE which should be handled by trained staff only.

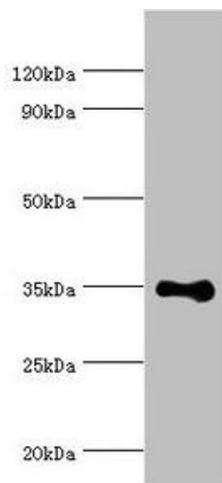
Storage: -20 °C,-80 °C

Storage Comment: Upon receipt, store at -20°C or -80°C. Avoid repeated freeze.



Immunohistochemistry

Image 1. Immunohistochemistry of paraffin-embedded human prostate cancer using ABIN7150291 at dilution of 1:100



Western Blotting

Image 2. Western blot All lanes: DNA repair protein RAD51 homolog 4 antibody at 8 µg/mL + Jurkat whole cell lysate
Secondary Goat polyclonal to rabbit IgG at 1/10000 dilution
Predicted band size: 36, 6, 24, 31, 13, 23, 38 kDa Observed band size: 36 kDa