



[Go to Product page](#)

Datasheet for ABIN7150305
anti-XRCC4 antibody (AA 1-336)

1 Image

Overview

Quantity:	100 µL
Target:	XRCC4
Binding Specificity:	AA 1-336
Reactivity:	Human
Host:	Rabbit
Clonality:	Polyclonal
Conjugate:	This XRCC4 antibody is un-conjugated
Application:	ELISA, Immunohistochemistry (IHC)

Product Details

Immunogen:	Recombinant Human DNA repair protein XRCC4 protein (1-336AA)
Isotype:	IgG
Cross-Reactivity:	Human
Purification:	Antigen Affinity Purified

Target Details

Target:	XRCC4
Alternative Name:	XRCC4 (XRCC4 Products)
Background:	Background: Involved in DNA non-homologous end joining (NHEJ) required for double-strand break repair and V(D)J recombination. Binds to DNA and to DNA ligase IV (LIG4). The LIG4-

Target Details

XRCC4 complex is responsible for the NHEJ ligation step, and XRCC4 enhances the joining activity of LIG4. Binding of the LIG4-XRCC4 complex to DNA ends is dependent on the assembly of the DNA-dependent protein kinase complex DNA-PK to these DNA ends.

Aliases: DNA double strand break repair and V(D)J recombination protein XRCC4 antibody, DNA repair protein XRCC4 antibody, SSMED antibody, X ray repair complementing defective repair in Chinese hamster cells 4 antibody, X ray repair cross complementing 4 antibody, X ray repair cross complementing protein 4 antibody, X-ray repair cross-complementing protein 4 antibody, XRCC 4 antibody, XRCC4 antibody, XRCC4_HUMAN antibody

UniProt: [Q13426](#)

Pathways: [DNA Damage Repair](#), [Production of Molecular Mediator of Immune Response](#)

Application Details

Application Notes: Recommended dilution: IHC:1:20-1:200,

Restrictions: For Research Use only

Handling

Format: Liquid

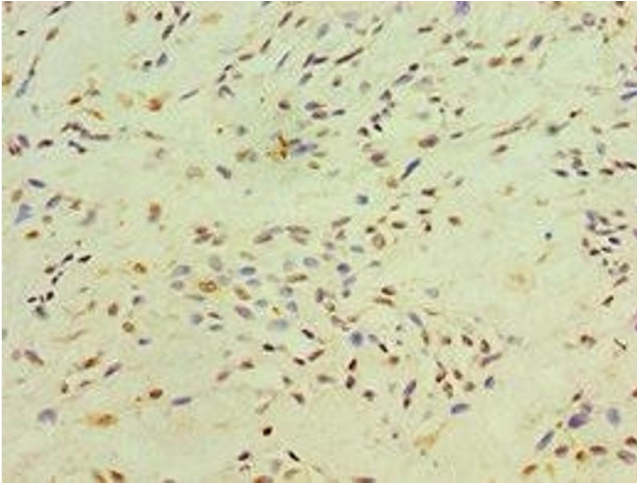
Buffer: PBS with 0.02 % sodium azide, 50 % glycerol, pH 7.3.

Preservative: Sodium azide

Precaution of Use: This product contains Sodium azide: a POISONOUS AND HAZARDOUS SUBSTANCE which should be handled by trained staff only.

Storage: -20 °C,-80 °C

Storage Comment: Upon receipt, store at -20°C or -80°C. Avoid repeated freeze.



Immunohistochemistry

Image 1. Immunohistochemistry of paraffin-embedded human breast cancer using ABIN7150305 at dilution of 1:100