

Datasheet for ABIN7150310
anti-GINS1 antibody (AA 1-196)[Go to Product page](#)

2 Images

Overview

Quantity:	100 µg
Target:	GINS1
Binding Specificity:	AA 1-196
Reactivity:	Human
Host:	Rabbit
Clonality:	Polyclonal
Conjugate:	This GINS1 antibody is un-conjugated
Application:	ELISA, Immunohistochemistry (IHC)

Product Details

Immunogen:	Recombinant Human DNA replication complex GINS protein PSF1 protein (1-196AA)
Isotype:	IgG
Cross-Reactivity:	Human
Purification:	>95%, Protein G purified

Target Details

Target:	GINS1
Alternative Name:	GINS1 (GINS1 Products)
Background:	Background: The GINS complex plays an essential role in the initiation of DNA replication, and progression of DNA replication forks. GINS complex seems to bind preferentially to single-

Target Details

stranded DNA. GINS1 is essential for function.

Aliases: DNA replication complex GINS protein PSF1 antibody, GINS complex subunit 1 (Psf1 homolog) antibody, GINS complex subunit 1 antibody, GINS1 antibody, partner of sld five-1 antibody, partner of sld5 antibody, PSF1 homolog antibody, PSF1_HUMAN antibody, RP4-691N24.2 antibody

UniProt: [Q14691](#)

Pathways: [DNA Replication](#), [Synthesis of DNA](#)

Application Details

Application Notes: Recommended dilution: IHC:1:200-1:500,

Restrictions: For Research Use only

Handling

Format: Liquid

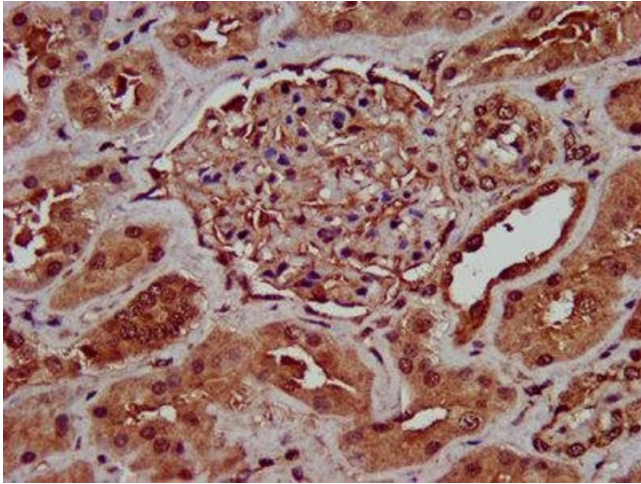
Buffer: Preservative: 0.03 % Proclin 300
Constituents: 50 % Glycerol, 0.01M PBS, pH 7.4

Preservative: ProClin

Precaution of Use: This product contains ProClin: a POISONOUS AND HAZARDOUS SUBSTANCE which should be handled by trained staff only.

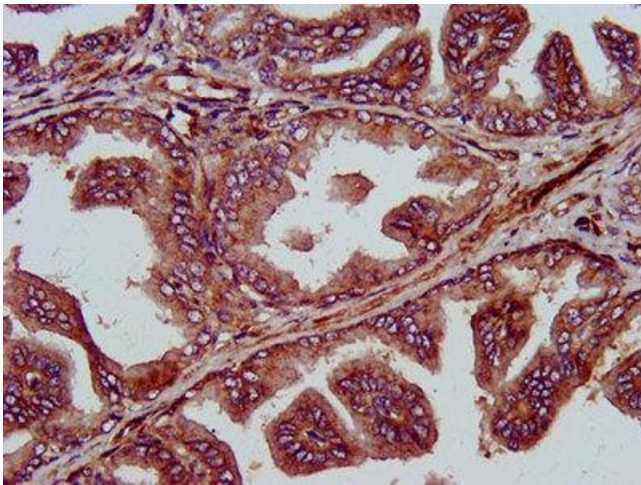
Storage: -20 °C, -80 °C

Storage Comment: Upon receipt, store at -20°C or -80°C. Avoid repeated freeze.



Immunohistochemistry

Image 1. IHC image of ABIN7150310 diluted at 1:400 and staining in paraffin-embedded human kidney tissue performed on a Leica Bond™ system. After dewaxing and hydration, antigen retrieval was mediated by high pressure in a citrate buffer (pH 6.0). Section was blocked with 10% normal goat serum 30min at RT. Then primary antibody (1% BSA) was incubated at 4°C overnight. The primary is detected by a biotinylated secondary antibody and visualized using an HRP conjugated SP system.



Immunohistochemistry

Image 2. IHC image of ABIN7150310 diluted at 1:400 and staining in paraffin-embedded human prostate tissue performed on a Leica Bond™ system. After dewaxing and hydration, antigen retrieval was mediated by high pressure in a citrate buffer (pH 6.0). Section was blocked with 10% normal goat serum 30min at RT. Then primary antibody (1% BSA) was incubated at 4°C overnight. The primary is detected by a biotinylated secondary antibody and visualized using an HRP conjugated SP system.