

Datasheet for ABIN7150328  
**anti-MCM2 antibody (AA 2-904)**[Go to Product page](#)

## 3 Images

## Overview

Quantity:	100 µg
Target:	MCM2
Binding Specificity:	AA 2-904
Reactivity:	Human
Host:	Rabbit
Clonality:	Polyclonal
Conjugate:	This MCM2 antibody is un-conjugated
Application:	Western Blotting (WB), Immunohistochemistry (IHC), ELISA, Immunofluorescence (IF)

## Product Details

Immunogen:	Recombinant Human DNA replication licensing factor MCM2 protein (2-904AA)
Isotype:	IgG
Cross-Reactivity:	Human
Purification:	>95%, Protein G purified

## Target Details

Target:	MCM2
Alternative Name:	MCM2 ( <a href="#">MCM2 Products</a> )
Background:	Background: Acts as component of the MCM2-7 complex (MCM complex) which is the putative replicative helicase essential for \\\'once per cell cycle\\\' DNA replication initiation and

## Target Details

elongation in eukaryotic cells. The active ATPase sites in the MCM2-7 ring are formed through the interaction surfaces of two neighboring subunits such that a critical structure of a conserved arginine finger motif is provided in trans relative to the ATP-binding site of the Walker A box of the adjacent subunit. The six ATPase active sites, however, are likely to contribute differentially to the complex helicase activity. Required for the entry in S phase and for cell division.

Aliases: BM28 antibody, CCNL 1 antibody, CCNL1 antibody, CDC like 1 antibody, cdc19 antibody, CDCL 1 antibody, CDCL1 antibody, Cell division cycle like 1 antibody, Cyclin like 1 antibody, D3S3194 antibody, DNA replication licensing factor MCM2 antibody, KIAA0030 antibody, MCM 2 antibody, MCM2 antibody, MCM2 minichromosome maintenance deficient 2 mitotin antibody, MCM2 minichromosome maintenance deficient 2 mitotin (S. cerevisiae) antibody, MCM2 minichromosome maintenance deficient 2, mitotin antibody, MCM2\_HUMAN antibody, MGC10606 antibody, Minichromosome maintenance complex component 2 antibody, Minichromosome maintenance deficient 2 (mitotin) antibody, Minichromosome maintenance deficient 2 mitotin antibody, Minichromosome maintenance protein 2 antibody, Minichromosome maintenance protein 2 homolog antibody, Mitotin antibody, Nuclear protein BM28 antibody, OTTHUMP00000216047 antibody, OTTHUMP00000216050 antibody

UniProt: [P49736](#)

Pathways: [DNA Damage Repair](#), [Mitotic G1-G1/S Phases](#), [DNA Replication](#), [Chromatin Binding](#), [Synthesis of DNA](#)

## Application Details

Application Notes: Recommended dilution: WB:1:500-1:5000, IHC:1:500-1:1000, IF:1:200-1:500,

Restrictions: For Research Use only

## Handling

Format: Liquid

Buffer: Preservative: 0.03 % Proclin 300  
Constituents: 50 % Glycerol, 0.01M PBS, PH 7.4

Preservative: ProClin

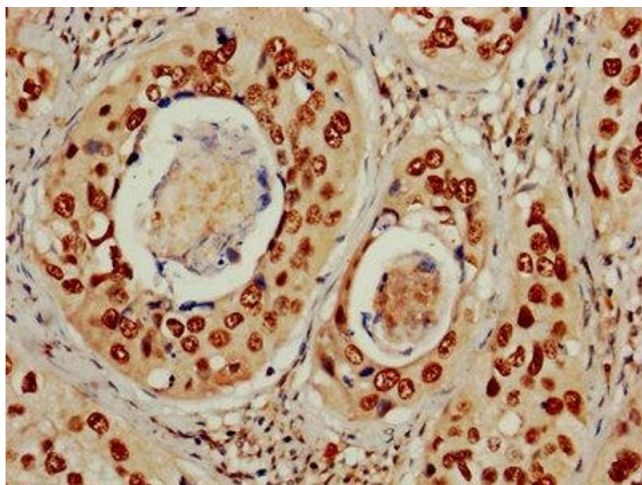
Precaution of Use: This product contains ProClin: a POISONOUS AND HAZARDOUS SUBSTANCE which should be handled by trained staff only.

## Handling

Storage: -20 °C, -80 °C

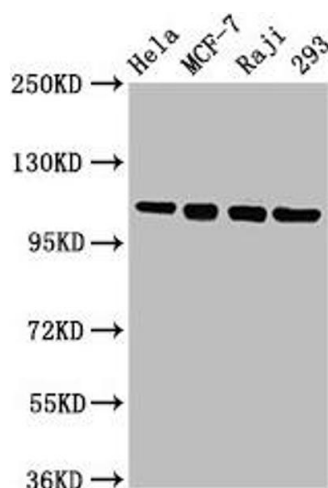
Storage Comment: Upon receipt, store at -20°C or -80°C. Avoid repeated freeze.

## Images



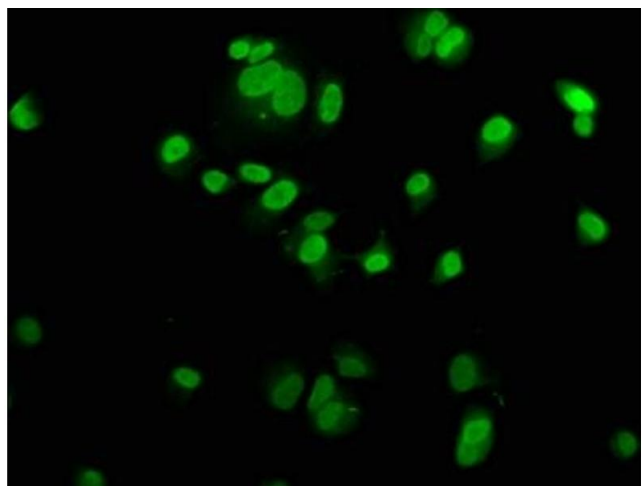
### Immunohistochemistry

**Image 1.** IHC image of ABIN7150328 diluted at 1:600 and staining in paraffin-embedded human cervical cancer performed on a Leica Bond™ system. After dewaxing and hydration, antigen retrieval was mediated by high pressure in a citrate buffer (pH 6.0). Section was blocked with 10% normal goat serum 30min at RT. Then primary antibody (1% BSA) was incubated at 4°C overnight. The primary is detected by a biotinylated secondary antibody and visualized using an HRP conjugated SP system.



### Western Blotting

**Image 2.** Western Blot Positive WB detected in: HeLa whole cell lysate, MCF-7 whole cell lysate, Raji whole cell lysate, 293 whole cell lysate All lanes: MCM2 antibody at 4.8 µg/mL Secondary Goat polyclonal to rabbit IgG at 1/50000 dilution Predicted band size: 102 kDa Observed band size: 102 kDa



### Immunofluorescence

**Image 3.** Immunofluorescence staining of MCF-7 cells with ABIN7150328 at 1:200, counter-stained with DAPI. The cells were fixed in 4% formaldehyde, permeabilized using 0.2% Triton X-100 and blocked in 10% normal Goat Serum. The cells were then incubated with the antibody overnight at 4°C. The secondary antibody was Alexa Fluor 488-conjugated AffiniPure Goat Anti-Rabbit IgG(H+L).