

Datasheet for ABIN7150332  
**anti-MCM3 antibody (AA 1-295)**[Go to Product page](#)

## 4 Images

## Overview

Quantity:	100 µL
Target:	MCM3
Binding Specificity:	AA 1-295
Reactivity:	Human
Host:	Rabbit
Clonality:	Polyclonal
Conjugate:	This MCM3 antibody is un-conjugated
Application:	Western Blotting (WB), Immunohistochemistry (IHC), ELISA, Chromatin Immunoprecipitation (ChIP)

## Product Details

Immunogen:	Recombinant Human DNA replication licensing factor MCM3 protein (1-295AA)
Isotype:	IgG
Cross-Reactivity:	Human
Purification:	Antigen Affinity Purified

## Target Details

Target:	MCM3
Alternative Name:	MCM3 ( <a href="#">MCM3 Products</a> )
Background:	Background: Acts as component of the MCM2-7 complex (MCM complex) which is the putative

## Target Details

replicative helicase essential for 'once per cell cycle' DNA replication initiation and elongation in eukaryotic cells. The active ATPase sites in the MCM2-7 ring are formed through the interaction surfaces of two neighboring subunits such that a critical structure of a conserved arginine finger motif is provided in trans relative to the ATP-binding site of the Walker A box of the adjacent subunit. The six ATPase active sites, however, are likely to contribute differentially to the complex helicase activity. Required for DNA replication and cell proliferation.

Aliases: Cervical cancer proto oncogene 5 antibody, DNA polymerase alpha holoenzyme associated P1 antibody, DNA polymerase alpha holoenzyme associated protein P1 antibody, DNA polymerase alpha holoenzyme-associated protein P1 antibody, DNA replication factor MCM3 antibody, DNA replication licensing factor mcm3 antibody, HCC 5 antibody, HCC5 antibody, hRlf beta subunit antibody, Human cervical cancer proto oncogene 5 antibody, MCM 3 antibody, mcm3 antibody, MCM3 minichromosome maintenance deficient 3 antibody, MCM3\_HUMAN antibody, MGC1157 antibody, Minichromosome maintenance complex component 3 antibody, Minichromosome maintenance deficient 3 antibody, Minichromosome maintenance protein 3 antibody, P1 h antibody, P1 MCM3 antibody, P1 Protein antibody, P1-MCM3 antibody, P1.h antibody, p102 antibody, P102 protein antibody, Replication licensing factor beta subunit antibody, RLF beta subunit antibody, RLF subunit beta antibody, RLFB antibody

UniProt: [P25205](#)

Pathways: [DNA Damage Repair](#), [Mitotic G1-G1/S Phases](#), [DNA Replication](#), [Chromatin Binding](#), [Synthesis of DNA](#)

## Application Details

Application Notes: Recommended dilution: WB:1:1000-1:5000, IHC:1:20-1:200,

Restrictions: For Research Use only

## Handling

Format: Liquid

Buffer: PBS with 0.02 % sodium azide, 50 % glycerol, pH 7.3.

Preservative: Sodium azide

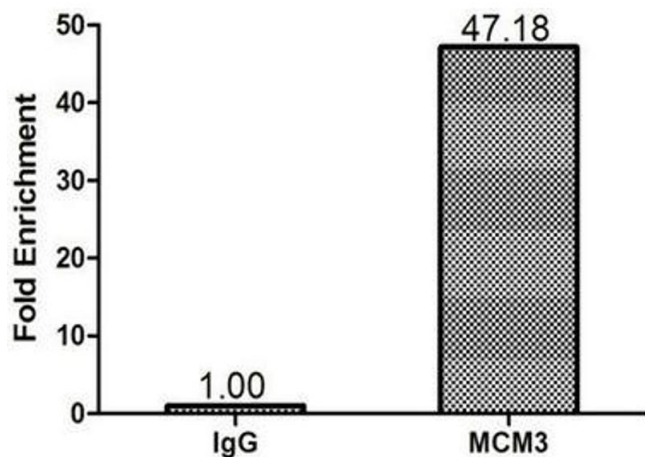
Precaution of Use: This product contains Sodium azide: a POISONOUS AND HAZARDOUS SUBSTANCE which should be handled by trained staff only.

## Handling

Storage: -20 °C, -80 °C

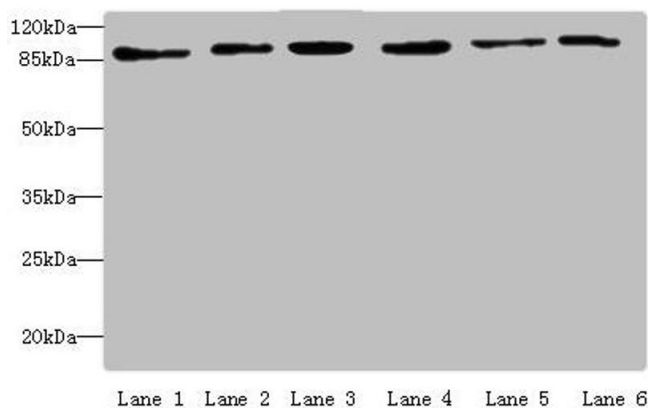
Storage Comment: Upon receipt, store at -20°C or -80°C. Avoid repeated freeze.

## Images



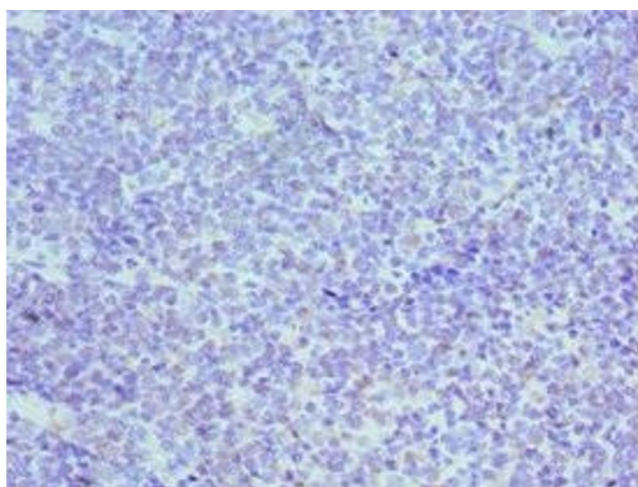
### Immunohistochemistry

**Image 1.** Chromatin Immunoprecipitation 293T ( $1.6 \times 10^6$ ) were cross-linked with formaldehyde, sonicated, and immunoprecipitated with 4  $\mu$ g anti-MCM3 or a control normal rabbit IgG. The resulting ChIP DNA was quantified using real-time PCR with primers against the IRF-1 promoter.



### Western Blotting

**Image 2.** Western blot All lanes: MCM3 antibody at 4  $\mu$ g/mL  
Lane 1: Hela whole cell lysate Lane 2: 293T whole cell lysate  
Lane 3: K562 whole cell lysate Lane 4: HepG2 whole cell lysate  
Lane 5: Jurkats whole cell lysate Lane 6: U917 whole cell lysate  
Secondary Goat polyclonal to rabbit IgG at 1/10000 dilution  
Predicted band size: 91, 96 kDa Observed band size: 91 kDa



### Immunohistochemistry

**Image 3.** Immunohistochemistry of paraffin-embedded human tonsil tissue using ABIN7150332 at dilution of 1:100

Please check the [product details page](#) for more images. Overall 4 images are available for ABIN7150332.