

Datasheet for ABIN7150338  
**anti-MCM5 antibody (AA 1-230)**[Go to Product page](#)

## 3 Images

## Overview

Quantity:	100 µL
Target:	MCM5
Binding Specificity:	AA 1-230
Reactivity:	Human
Host:	Rabbit
Clonality:	Polyclonal
Conjugate:	This MCM5 antibody is un-conjugated
Application:	Western Blotting (WB), Immunohistochemistry (IHC), ELISA

## Product Details

Immunogen:	Recombinant Human DNA replication licensing factor MCM5 protein (1-230AA)
Isotype:	IgG
Cross-Reactivity:	Human, Mouse
Purification:	Antigen Affinity Purified

## Target Details

Target:	MCM5
Alternative Name:	MCM5 ( <a href="#">MCM5 Products</a> )
Background:	Background: Acts as component of the MCM2-7 complex (MCM complex) which is the putative replicative helicase essential for \\\'once per cell cycle\\\' DNA replication initiation and

## Target Details

elongation in eukaryotic cells. The active ATPase sites in the MCM2-7 ring are formed through the interaction surfaces of two neighboring subunits such that a critical structure of a conserved arginine finger motif is provided in trans relative to the ATP-binding site of the Walker A box of the adjacent subunit. The six ATPase active sites, however, are likely to contribute differentially to the complex helicase activity (By similarity). Interacts with MCMBP. Aliases: CDC 46 antibody, CDC46 antibody, CDC46 homolog antibody, Cell division cycle 46 antibody, DNA replication licensing factor antibody, DNA replication licensing factor MCM 5 antibody, DNA replication licensing factor MCM5 antibody, MCM 5 antibody, MCM5 antibody, MCM5\_HUMAN antibody, MGC5315 antibody, Minichromosome maintenance complex component 5 antibody, Minichromosome maintenance deficient (S. cerevisiae) 5 antibody, Minichromosome maintenance deficient 5 antibody, Minichromosome maintenance deficient protein 5 antibody, P1 CDC46 antibody, P1-CDC46 antibody

UniProt: [P33992](#)

Pathways: [DNA Damage Repair](#), [Mitotic G1-G1/S Phases](#), [DNA Replication](#), [Chromatin Binding](#), [Synthesis of DNA](#)

## Application Details

Application Notes: Recommended dilution: WB:1:500-1:2000, IHC:1:20-1:200,

Restrictions: For Research Use only

## Handling

Format: Liquid

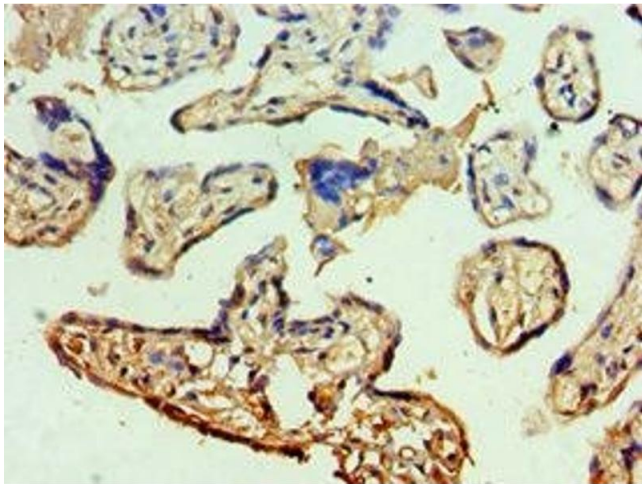
Buffer: PBS with 0.02 % sodium azide, 50 % glycerol, pH 7.3.

Preservative: Sodium azide

Precaution of Use: This product contains Sodium azide: a POISONOUS AND HAZARDOUS SUBSTANCE which should be handled by trained staff only.

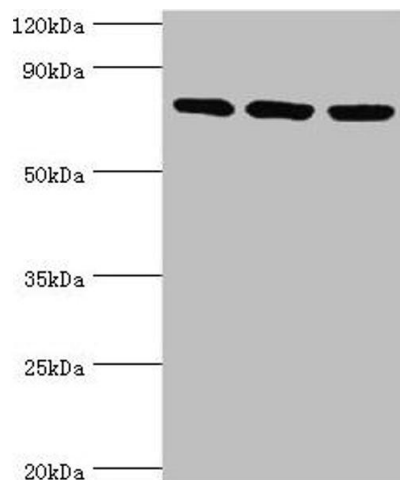
Storage: -20 °C,-80 °C

Storage Comment: Upon receipt, store at -20°C or -80°C. Avoid repeated freeze.



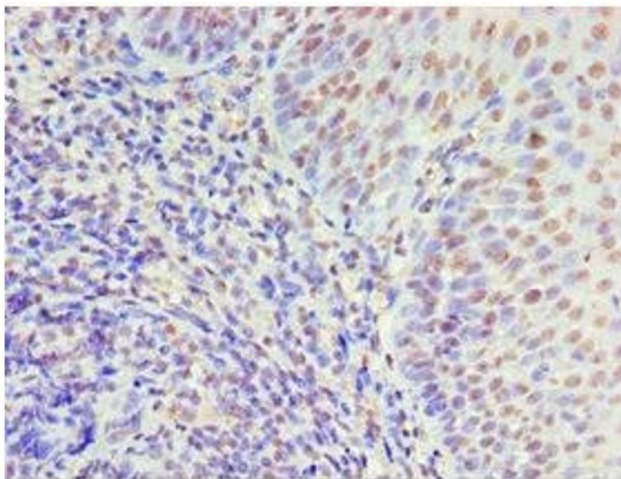
#### Immunohistochemistry

**Image 1.** Immunohistochemistry of paraffin-embedded human placenta tissue using ABIN7150338 at dilution of 1:100



#### Western Blotting

**Image 2.** Western blot All lanes: DNA replication licensing factor MCM5 antibody at 3 µg/mL Lane 1: Hela whole cell lysate Lane 2: MCF-7 whole cell lysate Lane 2: Mouse thymus tissue Secondary Goat polyclonal to rabbit IgG at 1/10000 dilution Predicted band size: 82 kDa Observed band size: 82 kDa



#### Immunohistochemistry

**Image 3.** Immunohistochemistry of paraffin-embedded human tonsil tissue using ABIN7150338 at dilution of 1:100