

Datasheet for ABIN7150339  
**anti-MCM6 antibody (AA 562-821)**[Go to Product page](#)

## 3 Images

## Overview

Quantity:	100 µL
Target:	MCM6
Binding Specificity:	AA 562-821
Reactivity:	Human
Host:	Rabbit
Clonality:	Polyclonal
Conjugate:	This MCM6 antibody is un-conjugated
Application:	Western Blotting (WB), Immunohistochemistry (IHC), ELISA

## Product Details

Immunogen:	Recombinant Human DNA replication licensing factor MCM6 protein (562-821AA)
Isotype:	IgG
Cross-Reactivity:	Human
Purification:	Antigen Affinity Purified

## Target Details

Target:	MCM6
Alternative Name:	MCM6 ( <a href="#">MCM6 Products</a> )
Background:	Background: Acts as component of the MCM2-7 complex (MCM complex) which is the putative replicative helicase essential for \\\'once per cell cycle\\\' DNA replication initiation and

## Target Details

elongation in eukaryotic cells. The active ATPase sites in the MCM2-7 ring are formed through the interaction surfaces of two neighboring subunits such that a critical structure of a conserved arginine finger motif is provided in trans relative to the ATP-binding site of the Walker A box of the adjacent subunit. The six ATPase active sites, however, are likely to contribute differentially to the complex helicase activity.

Aliases: DNA replication licensing factor MCM6 antibody, MCG40308 antibody, Mcm6 antibody, MCM6 minichromosome maintenance deficient 6 (MIS5 homolog, *S. pombe*) antibody, MCM6 minichromosome maintenance deficient 6 antibody, MCM6\_HUMAN antibody, Minichromosome maintenance complex component 6 antibody, Minichromosome maintenance deficient (mis5 *S. pombe*) 6 antibody, Minichromosome maintenance deficient 6 homolog antibody, Minichromosome maintenance protein 6 antibody, Mis5 antibody, MIS5 homolog antibody, p105MCM antibody

UniProt: [Q14566](#)

Pathways: [DNA Damage Repair](#), [Mitotic G1-G1/S Phases](#), [DNA Replication](#), [Synthesis of DNA](#)

## Application Details

Application Notes: Recommended dilution: WB:1:500-1:2000, IHC:1:20-1:200,

Restrictions: For Research Use only

## Handling

Format: Liquid

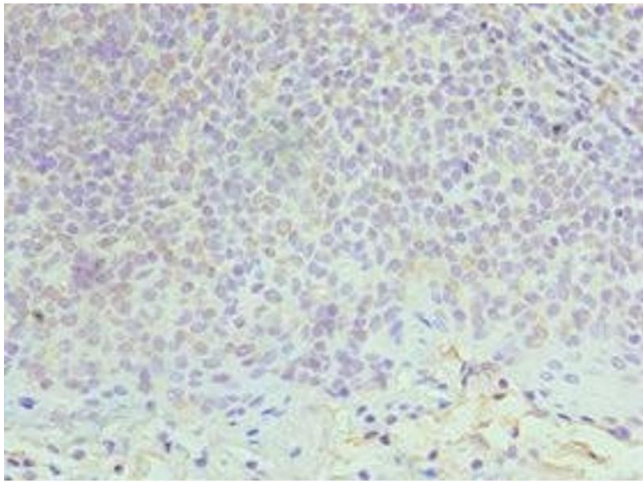
Buffer: PBS with 0.02 % sodium azide, 50 % glycerol, pH 7.3.

Preservative: Sodium azide

Precaution of Use: This product contains Sodium azide: a POISONOUS AND HAZARDOUS SUBSTANCE which should be handled by trained staff only.

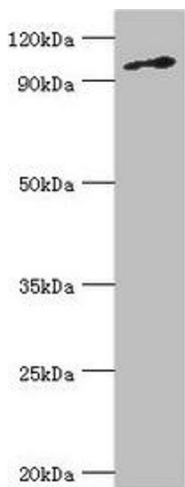
Storage: -20 °C, -80 °C

Storage Comment: Upon receipt, store at -20°C or -80°C. Avoid repeated freeze.



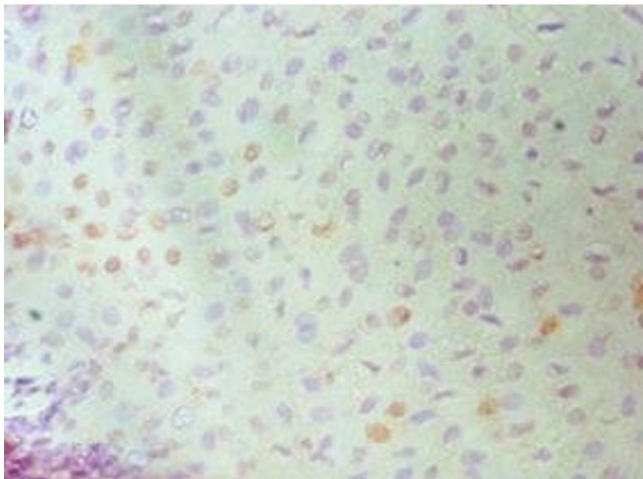
### Immunohistochemistry

**Image 1.** Immunohistochemistry of paraffin-embedded human tonsil tissue using ABIN7150339 at dilution of 1:100



### Western Blotting

**Image 2.** Western blot All lanes: DNA replication licensing factor MCM6 antibody at 3 µg/mL + Jurkat whole cell lysate  
Secondary Goat polyclonal to rabbit IgG at 1/10000 dilution  
Predicted band size: 93 kDa Observed band size: 93 kDa



### Immunohistochemistry

**Image 3.** Immunohistochemistry of paraffin-embedded human cervical cancer using ABIN7150339 at dilution of 1:100