

Datasheet for ABIN7150342

anti-Topoisomerase I antibody (AA 358-501)[Go to Product page](#)**1** Image

Overview

Quantity:	100 µg
Target:	Topoisomerase I (TOP1)
Binding Specificity:	AA 358-501
Reactivity:	Human
Host:	Rabbit
Clonality:	Polyclonal
Conjugate:	This Topoisomerase I antibody is un-conjugated
Application:	ELISA, Immunofluorescence (IF)

Product Details

Immunogen:	Recombinant Human DNA topoisomerase 1 protein (358-501AA)
Isotype:	IgG
Cross-Reactivity:	Human
Purification:	>95%, Protein G purified

Target Details

Target:	Topoisomerase I (TOP1)
Alternative Name:	TOP1 (TOP1 Products)
Target Type:	Viral Protein
Background:	Background: Releases the supercoiling and torsional tension of DNA introduced during the DNA

Target Details

replication and transcription by transiently cleaving and rejoining one strand of the DNA duplex. Introduces a single-strand break via transesterification at a target site in duplex DNA. The scissile phosphodiester is attacked by the catalytic tyrosine of the enzyme, resulting in the formation of a DNA-(3'-phosphotyrosyl)-enzyme intermediate and the expulsion of a 5'-OH DNA strand. The free DNA strand then rotates around the intact phosphodiester bond on the opposing strand, thus removing DNA supercoils. Finally, in the religation step, the DNA 5'-OH attacks the covalent intermediate to expel the active-site tyrosine and restore the DNA phosphodiester backbone (By similarity). Regulates the alternative splicing of tissue factor (F3) pre-mRNA in endothelial cells. Involved in the circadian transcription of the core circadian clock component ARNTL/BMAL1 by altering the chromatin structure around the ROR response elements (ROREs) on the ARNTL/BMAL1 promoter.

Aliases: DNA topoisomerase 1 antibody, DNA topoisomerase I antibody, NUP98 fusion gene antibody, TOP 1 antibody, TOP I antibody, TOP1 antibody, TOP1_HUMAN antibody, TOPI antibody, Topoisomerase (DNA) I antibody, Topoisomerase 1 antibody, Topoisomerase1 antibody, Topoisomerasel antibody, Type I DNA topoisomerase antibody

UniProt: [P11387](#)

Pathways: [Caspase Cascade in Apoptosis](#), [Stem Cell Maintenance](#)

Application Details

Application Notes: Recommended dilution: IF:1:50-1:200,

Restrictions: For Research Use only

Handling

Format: Liquid

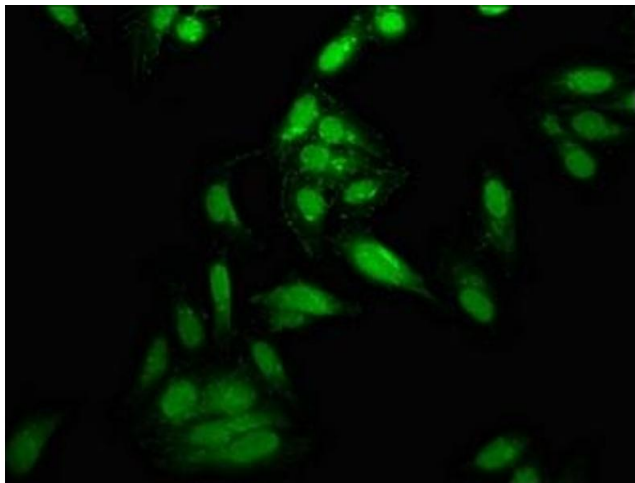
Buffer: Preservative: 0.03 % Proclin 300
Constituents: 50 % Glycerol, 0.01M PBS, pH 7.4

Preservative: ProClin

Precaution of Use: This product contains ProClin: a POISONOUS AND HAZARDOUS SUBSTANCE which should be handled by trained staff only.

Storage: -20 °C,-80 °C

Storage Comment: Upon receipt, store at -20°C or -80°C. Avoid repeated freeze.



Immunofluorescence

Image 1. Immunofluorescence staining of HeLa cells with ABIN7150342 at 1:166, counter-stained with DAPI. The cells were fixed in 4 % formaldehyde, permeabilized using 0.2 % Triton X-100 and blocked in 10 % normal Goat Serum. The cells were then incubated with the antibody overnight at 4 °C. The secondary antibody was Alexa Fluor 488-conjugated AffiniPure Goat Anti-Rabbit IgG(H+L).