



[Go to Product page](#)

Datasheet for ABIN7150368  
**anti-Id2 antibody (AA 1-134)**

2 Images

Overview

Quantity:	100 µg
Target:	Id2
Binding Specificity:	AA 1-134
Reactivity:	Human
Host:	Rabbit
Clonality:	Polyclonal
Conjugate:	This Id2 antibody is un-conjugated
Application:	ELISA, Immunohistochemistry (IHC), Immunofluorescence (IF)

Product Details

Immunogen:	Recombinant Human DNA-binding protein inhibitor ID-2 protein (1-134AA)
Isotype:	IgG
Cross-Reactivity:	Human
Purification:	>95%, Protein G purified

Target Details

Target:	Id2
Alternative Name:	ID2 ( <a href="#">Id2 Products</a> )
Background:	Background: D (inhibitor of DNA binding) HLH proteins lack a basic DNA-binding domain but are able to form heterodimers with other HLH proteins, thereby inhibiting DNA binding. ID-2 may be

## Target Details

---

an inhibitor of tissue-specific gene expression.

Aliases: bHLHb26 antibody, Cell growth inhibiting gene 8 antibody, class B basic helix loop helix protein 26 antibody, Class B basic helix-loop-helix protein 26 antibody, DNA binding protein inhibitor ID 2 antibody, DNA binding protein inhibitor ID2 antibody, DNA-binding protein inhibitor ID-2 antibody, GIG 8 antibody, GIG8 antibody, Helix loop helix protein ID2 antibody, ID2 antibody, ID2\_HUMAN antibody, ID2A antibody, ID2H antibody, Inhibitor of differentiation 2 antibody, Inhibitor of DNA binding 2 antibody, Inhibitor of DNA binding 2, dominant negative helix loop helix protein antibody, MGC26389 antibody

UniProt: [Q02363](#)

## Application Details

---

Application Notes: Recommended dilution: IHC:1:1000-1:2000, IF:1:200-1:500,

Restrictions: For Research Use only

## Handling

---

Format: Liquid

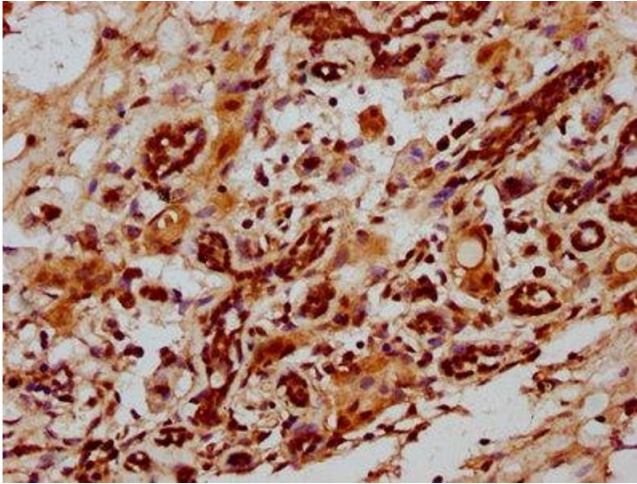
Buffer: Preservative: 0.03 % Proclin 300  
Constituents: 50 % Glycerol, 0.01M PBS, PH 7.4

Preservative: ProClin

Precaution of Use: This product contains ProClin: a POISONOUS AND HAZARDOUS SUBSTANCE which should be handled by trained staff only.

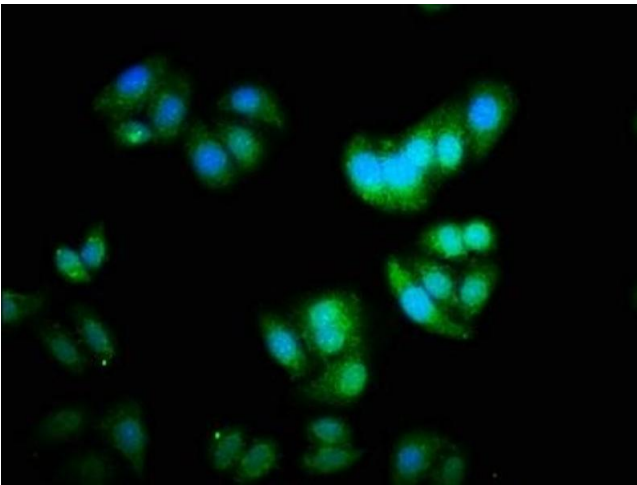
Storage: -20 °C,-80 °C

Storage Comment: Upon receipt, store at -20°C or -80°C. Avoid repeated freeze.



### Immunohistochemistry

**Image 1.** IHC image of ABIN7150368 diluted at 1:1000 and staining in paraffin-embedded human breast cancer performed on a Leica Bond™ system. After dewaxing and hydration, antigen retrieval was mediated by high pressure in a citrate buffer (pH 6.0). Section was blocked with 10% normal goat serum 30min at RT. Then primary antibody (1% BSA) was incubated at 4°C overnight. The primary is detected by a biotinylated secondary antibody and visualized using an HRP conjugated SP system.



### Immunofluorescence

**Image 2.** Immunofluorescence staining of HepG2 cells with ABIN7150368 at 1:333, counter-stained with DAPI. The cells were fixed in 4% formaldehyde, permeabilized using 0.2% Triton X-100 and blocked in 10% normal Goat Serum. The cells were then incubated with the antibody overnight at 4°C. The secondary antibody was Alexa Fluor 488-conjugated AffiniPure Goat Anti-Rabbit IgG(H+L).