

Datasheet for ABIN7150380
anti-RFX2 antibody (AA 1-130)[Go to Product page](#)

3 Images

Overview

Quantity:	100 µg
Target:	RFX2
Binding Specificity:	AA 1-130
Reactivity:	Human
Host:	Rabbit
Clonality:	Polyclonal
Conjugate:	This RFX2 antibody is un-conjugated
Application:	ELISA, Immunohistochemistry (IHC), Immunofluorescence (IF)

Product Details

Immunogen:	Recombinant Human DNA-binding protein RFX2 protein (1-130AA)
Isotype:	IgG
Cross-Reactivity:	Human
Purification:	>95%, Protein G purified

Target Details

Target:	RFX2
Alternative Name:	RFX2 (RFX2 Products)
Background:	Background: Transcription factor that acts as a key regulator of spermatogenesis. Acts by regulating expression of genes required for the haploid phase during spermiogenesis, such as

Target Details

genes required for cilium assembly and function (By similarity). Recognizes and binds the X-box, a regulatory motif with DNA sequence 5\\\'-GTNRCC(0-3N)RGYAAC-3\\\' present on promoters (PubMed:10330134). Probably activates transcription of the testis-specific histone gene HIST1H1T (By similarity).

Aliases: DNA-binding protein RFX2 antibody, HLA class II regulatory factor RFX2 antibody, regulatory factor X 2 (influences HLA class II expression) antibody, Regulatory factor X 2 antibody, regulatory factor X2 antibody, RFX2 antibody, RFX2_HUMAN antibody, trans acting regulatory factor 2 antibody

UniProt: [P48378](#)

Application Details

Application Notes: Recommended dilution: IHC:1:500-1:1000, IF:1:200-1:500,

Restrictions: For Research Use only

Handling

Format: Liquid

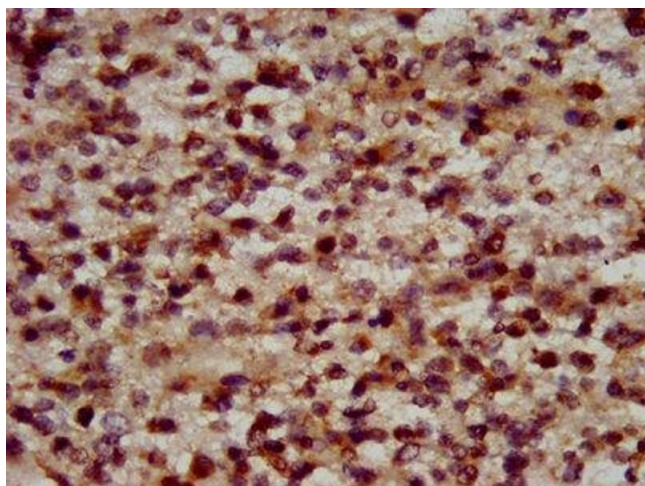
Buffer: Preservative: 0.03 % Proclin 300
Constituents: 50 % Glycerol, 0.01M PBS, pH 7.4

Preservative: ProClin

Precaution of Use: This product contains ProClin: a POISONOUS AND HAZARDOUS SUBSTANCE which should be handled by trained staff only.

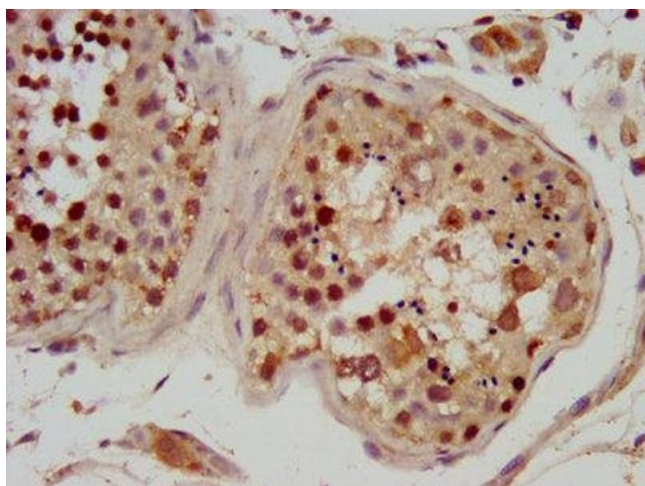
Storage: -20 °C,-80 °C

Storage Comment: Upon receipt, store at -20°C or -80°C. Avoid repeated freeze.



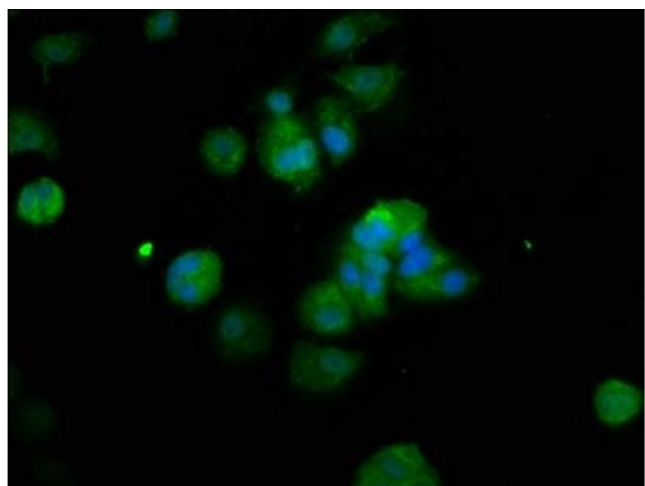
Immunohistochemistry

Image 1. IHC image of ABIN7150380 diluted at 1:600 and staining in paraffin-embedded human glioma performed on a Leica Bond™ system. After dewaxing and hydration, antigen retrieval was mediated by high pressure in a citrate buffer (pH 6.0). Section was blocked with 10% normal goat serum 30min at RT. Then primary antibody (1% BSA) was incubated at 4°C overnight. The primary is detected by a biotinylated secondary antibody and visualized using an HRP conjugated SP system.



Immunohistochemistry

Image 2. IHC image of ABIN7150380 diluted at 1:600 and staining in paraffin-embedded human testis tissue performed on a Leica Bond™ system. After dewaxing and hydration, antigen retrieval was mediated by high pressure in a citrate buffer (pH 6.0). Section was blocked with 10% normal goat serum 30min at RT. Then primary antibody (1% BSA) was incubated at 4°C overnight. The primary is detected by a biotinylated secondary antibody and visualized using an HRP conjugated SP system.



Immunofluorescence

Image 3. Immunofluorescence staining of MCF-7 cells with ABIN7150380 at 1:200, counter-stained with DAPI. The cells were fixed in 4% formaldehyde, permeabilized using 0.2% Triton X-100 and blocked in 10% normal Goat Serum. The cells were then incubated with the antibody overnight at 4°C. The secondary antibody was Alexa Fluor 488-conjugated AffiniPure Goat Anti-Rabbit IgG(H+L).