

Datasheet for ABIN7150406  
**anti-CCDC111 antibody (AA 305-537)**



[Go to Product page](#)

2 Images

### Overview

Quantity:	100 µg
Target:	CCDC111
Binding Specificity:	AA 305-537
Reactivity:	Human
Host:	Rabbit
Clonality:	Polyclonal
Conjugate:	This CCDC111 antibody is un-conjugated
Application:	ELISA, Immunohistochemistry (IHC), Immunofluorescence (IF)

### Product Details

Immunogen:	Recombinant Human DNA-directed primase/polymerase protein (305-537AA)
Isotype:	IgG
Cross-Reactivity:	Human
Purification:	>95%, Protein G purified

### Target Details

Target:	CCDC111
Alternative Name:	PRIMPOL ( <a href="#">CCDC111 Products</a> )
Background:	Background: DNA primase and DNA polymerase able to initiate de novo DNA synthesis using dNTPs. Shows a high capacity to tolerate DNA damage lesions such as 8oxoG and abasic sites

## Target Details

---

in DNA. Involved in translesion synthesis via its primase activity by mediating uninterrupted fork progression after programmed or damage-induced fork arrest and by reinitiating DNA synthesis after dNTP depletion. Required for mitochondrial DNA (mtDNA) synthesis, suggesting it may be involved in DNA tolerance during the replication of mitochondrial DNA. Has non-overlapping function with POLH.

Aliases: CC111\_HUMAN antibody, CCDC111 antibody, Coiled coil domain containing 111 antibody, Coiled-coil domain-containing protein 111 antibody, DNA-directed primase/polymerase protein antibody, MYP22 antibody, Primase and polymerase (DNA directed) antibody, PRIMPOL antibody

---

UniProt: [Q96LW4](#)

## Application Details

---

Application Notes: Recommended dilution: IHC:1:20-1:200, IF:1:50-1:200,

Restrictions: For Research Use only

## Handling

---

Format: Liquid

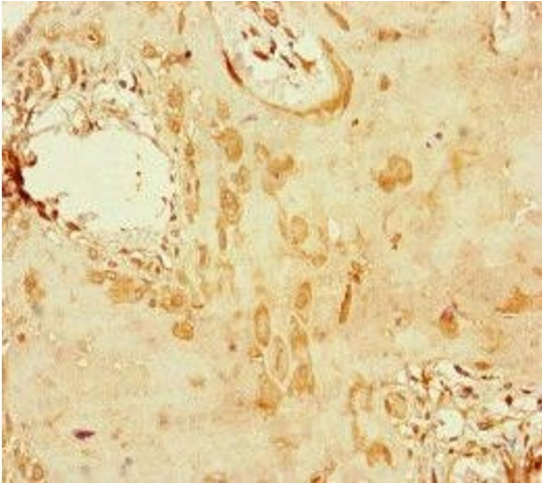
Buffer: Preservative: 0.03 % Proclin 300  
Constituents: 50 % Glycerol, 0.01M PBS, PH 7.4

Preservative: ProClin

Precaution of Use: This product contains ProClin: a POISONOUS AND HAZARDOUS SUBSTANCE which should be handled by trained staff only.

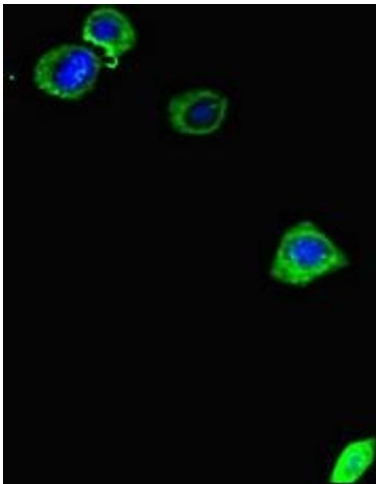
Storage: -20 °C,-80 °C

Storage Comment: Upon receipt, store at -20°C or -80°C. Avoid repeated freeze.



### Immunohistochemistry

**Image 1.** Immunohistochemistry of paraffin-embedded human placenta tissue using ABIN7150406 at dilution of 1:100



### Immunofluorescence

**Image 2.** Immunofluorescent analysis of HepG2 cells using ABIN7150406 at dilution of 1:100 and Alexa Fluor 488-conjugated AffiniPure Goat Anti-Rabbit IgG(H+L)