

Datasheet for ABIN7150430
anti-POLR2C antibody (AA 2-275)



[Go to Product page](#)

3 Images

Overview

Quantity:	100 µg
Target:	POLR2C
Binding Specificity:	AA 2-275
Reactivity:	Human
Host:	Rabbit
Clonality:	Polyclonal
Conjugate:	This POLR2C antibody is un-conjugated
Application:	Western Blotting (WB), ELISA, Immunohistochemistry (IHC)

Product Details

Immunogen:	Recombinant Human DNA-directed RNA polymerase II subunit RPB3 protein (2-275AA)
Isotype:	IgG
Cross-Reactivity:	Human, Mouse
Purification:	>95%, Protein G purified

Target Details

Target:	POLR2C
Alternative Name:	POLR2C (POLR2C Products)
Background:	Background: DNA-dependent RNA polymerase catalyzes the transcription of DNA into RNA using the four ribonucleoside triphosphates as substrates. Component of RNA polymerase II

Target Details

which synthesizes mRNA precursors and many functional non-coding RNAs. Pol II is the central component of the basal RNA polymerase II transcription machinery. It is composed of mobile elements that move relative to each other. RPB3 is part of the core element with the central large cleft and the clamp element that moves to open and close the cleft.

Aliases: DNA directed RNA polymerase II 33 kDa polypeptide antibody, DNA directed RNA polymerase II subunit C antibody, DNA directed RNA polymerase II subunit RPB3 antibody, DNA-directed RNA polymerase II 33 kDa polypeptide antibody, DNA-directed RNA polymerase II subunit C antibody, DNA-directed RNA polymerase II subunit RPB3 antibody, hRPB33 antibody, hsRPB3 antibody, POLR 2C antibody, POLR2 C antibody, Polr2c antibody, Polymerase (RNA) II (DNA directed) polypeptide C, 33 kDa antibody, polymerase RNA II DNA directed polypeptide C 33 kDa antibody, RNA polymerase II polypeptide C antibody, RNA polymerase II subunit 3 antibody, RNA polymerase II subunit B3 antibody, RPB 3 antibody, RPB3 antibody, RPB3_HUMAN antibody, RPB31 antibody, RPB33 antibody

UniProt: [P19387](#)

Pathways: [Regulatory RNA Pathways](#)

Application Details

Application Notes: Recommended dilution: WB:1:500-1:5000, IHC:1:20-1:200,

Restrictions: For Research Use only

Handling

Format: Liquid

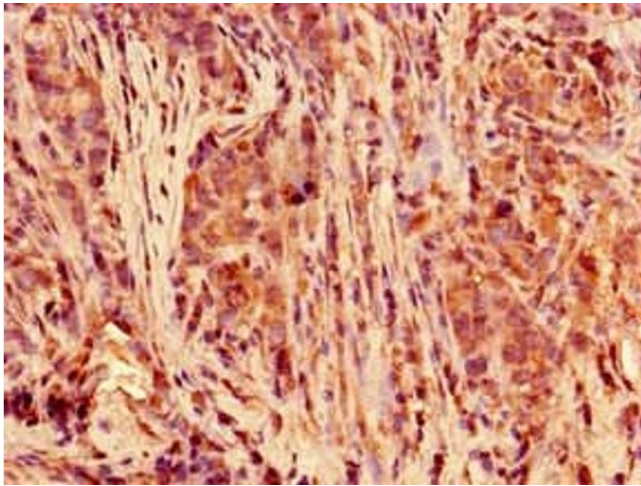
Buffer: Preservative: 0.03 % Proclin 300
Constituents: 50 % Glycerol, 0.01M PBS, PH 7.4

Preservative: ProClin

Precaution of Use: This product contains ProClin: a POISONOUS AND HAZARDOUS SUBSTANCE which should be handled by trained staff only.

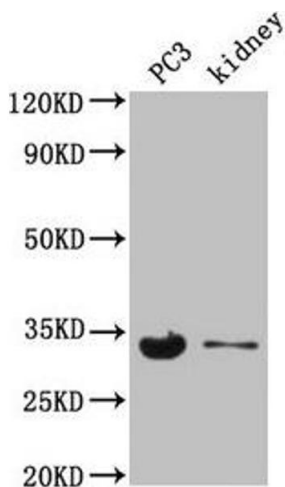
Storage: -20 °C,-80 °C

Storage Comment: Upon receipt, store at -20°C or -80°C. Avoid repeated freeze.



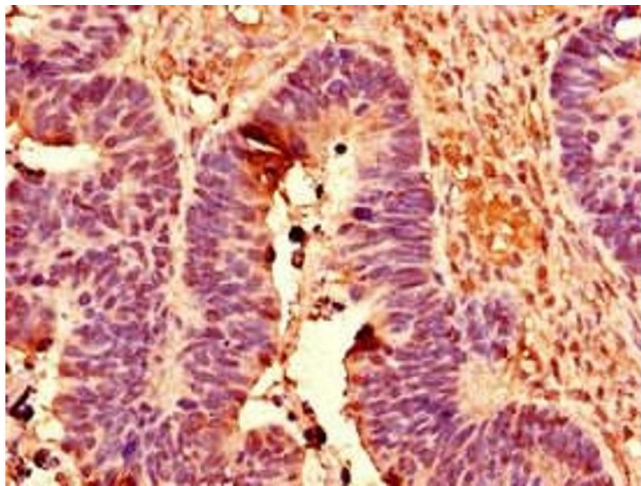
Immunohistochemistry

Image 1. Immunohistochemistry of paraffin-embedded human pancreatic cancer using ABIN7150430 at dilution of 1:100



Western Blotting

Image 2. Western Blot Positive WB detected in: PC-3 whole cell lysate, Mouse kidney tissue All lanes: POLR2C antibody at 3.5 µg/mL Secondary Goat polyclonal to rabbit IgG at 1/50000 dilution Predicted band size: 32 kDa Observed band size: 32 kDa



Immunohistochemistry

Image 3. Immunohistochemistry of paraffin-embedded human ovarian cancer using ABIN7150430 at dilution of 1:100