

Datasheet for ABIN7150438
anti-POLR2G antibody (AA 1-172)[Go to Product page](#)

1 Image

Overview

Quantity:	100 µL
Target:	POLR2G
Binding Specificity:	AA 1-172
Reactivity:	Human
Host:	Rabbit
Clonality:	Polyclonal
Conjugate:	This POLR2G antibody is un-conjugated
Application:	Western Blotting (WB), ELISA

Product Details

Immunogen:	Recombinant Human DNA-directed RNA polymerase II subunit RPB7 protein (1-172AA)
Isotype:	IgG
Cross-Reactivity:	Human
Purification:	>95%, Protein G purified

Target Details

Target:	POLR2G
Alternative Name:	POLR2G (POLR2G Products)
Background:	Background: DNA-dependent RNA polymerase catalyzes the transcription of DNA into RNA using the four ribonucleoside triphosphates as substrates. Component of RNA polymerase II

Target Details

which synthesizes mRNA precursors and many functional non-coding RNAs. Pol II is the central component of the basal RNA polymerase II transcription machinery. It is composed of mobile elements that move relative to each other. RPB7 is part of a subcomplex with RPB4 that binds to a pocket formed by RPB1, RPB2 and RPB6 at the base of the clamp element. The RPB4-RPB7 subcomplex seems to lock the clamp via RPB7 in the closed conformation thus preventing double-stranded DNA to enter the active site cleft. The RPB4-RPB7 subcomplex binds single-stranded DNA and RNA (By similarity). Binds RNA.

Aliases: DNA directed RNA polymerase II 19 kDa polypeptide antibody, DNA directed RNA polymerase II subunit G antibody, DNA directed RNA polymerase II subunit RPB7 antibody, DNA-directed RNA polymerase II subunit G antibody, DNA-directed RNA polymerase II subunit RPB7 antibody, hRPB19 antibody, hsRPB7 antibody, MGC138367 antibody, MGC138369 antibody, POLR2G antibody, polymerase (RNA) II (DNA directed) polypeptide G antibody, RNA polymerase II 19 kDa subunit antibody, RNA polymerase II subunit B7 antibody, RPB19 antibody, RPB7 antibody, RPB7_HUMAN antibody

UniProt: [P62487](#)

Pathways: [Regulatory RNA Pathways](#)

Application Details

Application Notes: Recommended dilution: WB:1:1000-1:5000,

Restrictions: For Research Use only

Handling

Format: Liquid

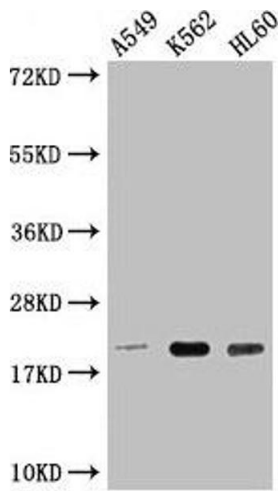
Buffer: Preservative: 0.03 % Proclin 300
Constituents: 50 % Glycerol, 0.01M PBS, pH 7.4

Preservative: ProClin

Precaution of Use: This product contains ProClin: a POISONOUS AND HAZARDOUS SUBSTANCE which should be handled by trained staff only.

Storage: -20 °C,-80 °C

Storage Comment: Upon receipt, store at -20°C or -80°C. Avoid repeated freeze.



Western Blotting

Image 1. Western Blot Positive WB detected in: A549 whole cell lysate, K562 whole cell lysate, HL60 whole cell lysate All lanes: POLR2G antibody at 1:2000 Secondary Goat polyclonal to rabbit IgG at 1/50000 dilution Predicted band size: 20 kDa Observed band size: 20 kDa