

Datasheet for ABIN7150466
anti-POLR3F antibody (AA 1-270)[Go to Product page](#)

1 Image

Overview

Quantity:	100 µg
Target:	POLR3F
Binding Specificity:	AA 1-270
Reactivity:	Human
Host:	Rabbit
Clonality:	Polyclonal
Conjugate:	This POLR3F antibody is un-conjugated
Application:	Western Blotting (WB), ELISA

Product Details

Immunogen:	Recombinant Human DNA-directed RNA polymerase III subunit RPC6 protein (1-270AA)
Isotype:	IgG
Cross-Reactivity:	Human
Purification:	>95%, Protein G purified

Target Details

Target:	POLR3F
Alternative Name:	POLR3F (POLR3F Products)
Background:	Background: DNA-dependent RNA polymerase catalyzes the transcription of DNA into RNA using the four ribonucleoside triphosphates as substrates. Specific peripheric component of

Target Details

RNA polymerase III which synthesizes small RNAs, such as 5S rRNA and tRNAs. May direct RNA Pol III binding to the TFIIIB-DNA complex. Plays a key role in sensing and limiting infection by intracellular bacteria and DNA viruses. Acts as nuclear and cytosolic DNA sensor involved in innate immune response. Can sense non-self dsDNA that serves as template for transcription into dsRNA. The non-self RNA polymerase III transcripts, such as Epstein-Barr virus-encoded RNAs (EBERs) induce type I interferon and NF- Kappa-B through the RIG-I pathway.

Aliases: DNA directed RNA polymerase III 39 kDa polypeptide antibody, DNA directed RNA polymerase III 39 kDa polypeptide F antibody, DNA directed RNA polymerase III subunit F antibody, DNA directed RNA polymerase III subunit RPC6 antibody, DNA directed RNA polymerases III 39 kDa polypeptide antibody, DNA-directed RNA polymerase III subunit F antibody, DNA-directed RNA polymerase III subunit RPC6 antibody, MGC13517 antibody, Polr3f antibody, Polymerase (RNA) III (DNA directed) polypeptide F antibody, RNA polymerase III 39 kDa subunit antibody, RNA polymerase III C39 subunit antibody, RNA polymerase III subunit C6 antibody, RPC 39 antibody, RPC 6 antibody, RPC39 antibody, RPC6 antibody, RPC6_HUMAN antibody

UniProt: [Q9H1D9](#)

Application Details

Application Notes: Recommended dilution: WB:1:500-1:2000,

Restrictions: For Research Use only

Handling

Format: Liquid

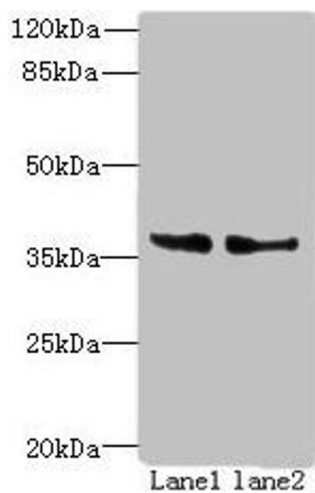
Buffer: Preservative: 0.03 % Proclin 300
Constituents: 50 % Glycerol, 0.01M PBS, PH 7.4

Preservative: ProClin

Precaution of Use: This product contains ProClin: a POISONOUS AND HAZARDOUS SUBSTANCE which should be handled by trained staff only.

Storage: -20 °C,-80 °C

Storage Comment: Upon receipt, store at -20°C or -80°C. Avoid repeated freeze.



Western Blotting

Image 1. Western blot All lanes: POLR3F antibody at 8 μ g/mL Lane 1: Hela whole cell lysate Lane 2: HepG2 whole cell lysate Secondary Goat polyclonal to rabbit IgG at 1/10000 dilution Predicted band size: 36 kDa Observed band size: 36 kDa