

Datasheet for ABIN7150474
anti-POLRMT antibody (AA 282-405)[Go to Product page](#)

1 Image

Overview

Quantity:	100 µg
Target:	POLRMT
Binding Specificity:	AA 282-405
Reactivity:	Human
Host:	Rabbit
Clonality:	Polyclonal
Conjugate:	This POLRMT antibody is un-conjugated
Application:	ELISA, Immunohistochemistry (IHC)

Product Details

Immunogen:	Recombinant Human DNA-directed RNA polymerase, mitochondrial protein (282-405AA)
Isotype:	IgG
Cross-Reactivity:	Human
Purification:	>95%, Protein G purified

Target Details

Target:	POLRMT
Alternative Name:	POLRMT (POLRMT Products)
Background:	Background: DNA-dependent RNA polymerase catalyzes the transcription of mitochondrial DNA into RNA using the four ribonucleoside triphosphates as substrates.

Target Details

Aliases: APOLMT antibody, DNA-directed RNA polymerase antibody, DNA-directed RNA polymerase mitochondrial antibody, h-mtRPOL antibody, mitochondrial antibody, MTRNAP antibody, MtRPOL antibody, POLRMT antibody, polymerase (RNA) mitochondrial (DNA directed) antibody, polymerase, RNA, mitochondrial antibody, RPOM antibody, RPOM_HUMAN antibody

UniProt: [O00411](#)

Application Details

Application Notes: Recommended dilution: IHC:1:200-1:500,

Restrictions: For Research Use only

Handling

Format: Liquid

Buffer: Preservative: 0.03 % Proclin 300
Constituents: 50 % Glycerol, 0.01M PBS, pH 7.4

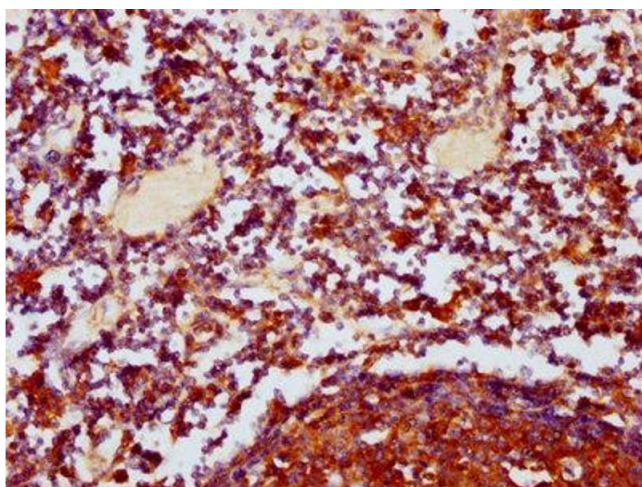
Preservative: ProClin

Precaution of Use: This product contains ProClin: a POISONOUS AND HAZARDOUS SUBSTANCE which should be handled by trained staff only.

Storage: -20 °C,-80 °C

Storage Comment: Upon receipt, store at -20°C or -80°C. Avoid repeated freeze.

Images



Immunohistochemistry

Image 1. IHC image of ABIN7150474 diluted at 1:400 and staining in paraffin-embedded human lymph node tissue performed on a Leica Bond™ system. After dewaxing and hydration, antigen retrieval was mediated by high pressure in a citrate buffer (pH 6.0). Section was blocked with 10 % normal goat serum 30 min at RT. Then primary antibody (1 % BSA) was incubated at 4 °C overnight. The primary is detected by a biotinylated secondary antibody and visualized using an HRP conjugated SP system.