

Datasheet for ABIN7150478
anti-POLR1C antibody (AA 125-230)[Go to Product page](#)

1 Image

Overview

Quantity:	100 µg
Target:	POLR1C
Binding Specificity:	AA 125-230
Reactivity:	Human
Host:	Rabbit
Clonality:	Polyclonal
Conjugate:	This POLR1C antibody is un-conjugated
Application:	Western Blotting (WB), ELISA

Product Details

Immunogen:	Recombinant Human DNA-directed RNA polymerases I and III subunit RPAC1 protein (125-230AA)
Isotype:	IgG
Cross-Reactivity:	Human, Mouse, Rat
Purification:	>95%, Protein G purified

Target Details

Target:	POLR1C
Alternative Name:	POLR1C (POLR1C Products)
Background:	Background: DNA-dependent RNA polymerase catalyzes the transcription of DNA into RNA

Target Details

using the four ribonucleoside triphosphates as substrates. Common component of RNA polymerases I and III which synthesize ribosomal RNA precursors and small RNAs, such as 5S rRNA and tRNAs, respectively. RPAC1 is part of the Pol core element with the central large cleft and probably a clamp element that moves to open and close the cleft (By similarity).

Aliases: 40 kDa antibody, AA409007 antibody, AA959927 antibody, Ac2-127 antibody, AC40 antibody, AL024089 antibody, DNA directed RNA polymerase I subunit C antibody, DNA directed RNA polymerases I and III 40 kDa polypeptide antibody, DNA directed RNA polymerases I and III subunit RPAC1 antibody, DNA-directed RNA polymerase I subunit C antibody, DNA-directed RNA polymerases I and III 40 kDa polypeptide antibody, DNA-directed RNA polymerases I and III subunit RPAC1 antibody, MGC105583 antibody, MGC161175 antibody, POLR1C antibody, POLR1E antibody, Polymerase (RNA) I polypeptide C, 30 kDa antibody, RNA polymerase 1 1 antibody, RNA polymerase I subunit C antibody, RNA polymerases I and III subunit AC1 antibody, RP3-337H4.4 antibody, RPA39 antibody, RPA40 antibody, RPA5 antibody, RPAC1 antibody, RPAC1_HUMAN antibody, RPC40 antibody, Rpo1 1 antibody, TCS3 antibody

UniProt: [O15160](#)

Application Details

Application Notes: Recommended dilution: WB:1:500-1:5000,

Restrictions: For Research Use only

Handling

Format: Liquid

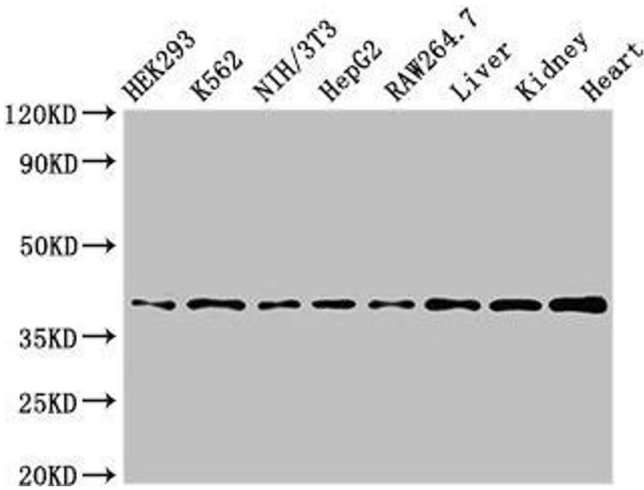
Buffer: Preservative: 0.03 % Proclin 300
Constituents: 50 % Glycerol, 0.01M PBS, pH 7.4

Preservative: ProClin

Precaution of Use: This product contains ProClin: a POISONOUS AND HAZARDOUS SUBSTANCE which should be handled by trained staff only.

Storage: -20 °C,-80 °C

Storage Comment: Upon receipt, store at -20°C or -80°C. Avoid repeated freeze.



Western Blotting

Image 1. Western Blot Positive WB detected in: HEK293 whole cell lysate, K562 whole cell lysate, NIH/3T3 whole cell lysate, HepG2 whole cell lysate, RAW264.7 whole cell lysate, Mouse liver tissue, Mouse kidney tissue, Rat heart tissue All lanes: POLR1C antibody at 3 µg/mL Secondary Goat polyclonal to rabbit IgG at 1/50000 dilution Predicted band size: 40, 39 kDa Observed band size: 40 kDa