



[Go to Product page](#)

Datasheet for ABIN7150566
anti-DOK2 antibody (AA 123-412)

3 Images

Overview

Quantity:	100 µg
Target:	DOK2
Binding Specificity:	AA 123-412
Reactivity:	Human
Host:	Rabbit
Clonality:	Polyclonal
Conjugate:	This DOK2 antibody is un-conjugated
Application:	Western Blotting (WB), Immunohistochemistry (IHC), ELISA, Immunofluorescence (IF)

Product Details

Immunogen:	Recombinant Human Docking protein 2 protein (123-412AA)
Isotype:	IgG
Cross-Reactivity:	Human, Mouse
Purification:	>95%, Protein G purified

Target Details

Target:	DOK2
Alternative Name:	DOK2 (DOK2 Products)
Background:	Background: DOK proteins are enzymatically inert adaptor or scaffolding proteins. They provide a docking platform for the assembly of multimolecular signaling complexes. DOK2 may

Target Details

modulate the cellular proliferation induced by IL-4, as well as IL-2 and IL-3. May be involved in modulating Bcr-Abl signaling. Attenuates EGF-stimulated MAP kinase activation (By similarity).
Aliases: Docking protein 2 56 kDa antibody, Docking protein 2 antibody, DOK 2 antibody, DOK R antibody, DOK2 antibody, DOK2_HUMAN antibody, Downstream of tyrosine kinase 2 antibody, OTTHUMP00000161710 antibody, OTTHUMP00000224923 antibody, p56(dok 2) antibody, p56(dok-2) antibody, p56dok 2 antibody, p56DOK antibody, p56dok2 antibody

UniProt: [O60496](#)

Application Details

Application Notes: Recommended dilution: WB:1:2000-1:5000, IHC:1:20-1:200, IF:1:50-1:200,

Restrictions: For Research Use only

Handling

Format: Liquid

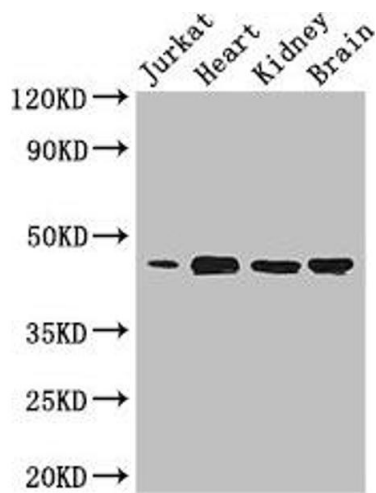
Buffer: Preservative: 0.03 % Proclin 300
Constituents: 50 % Glycerol, 0.01M PBS, PH 7.4

Preservative: ProClin

Precaution of Use: This product contains ProClin: a POISONOUS AND HAZARDOUS SUBSTANCE which should be handled by trained staff only.

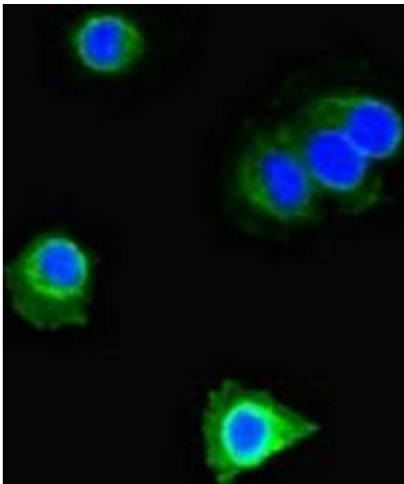
Storage: -20 °C,-80 °C

Storage Comment: Upon receipt, store at -20°C or -80°C. Avoid repeated freeze.



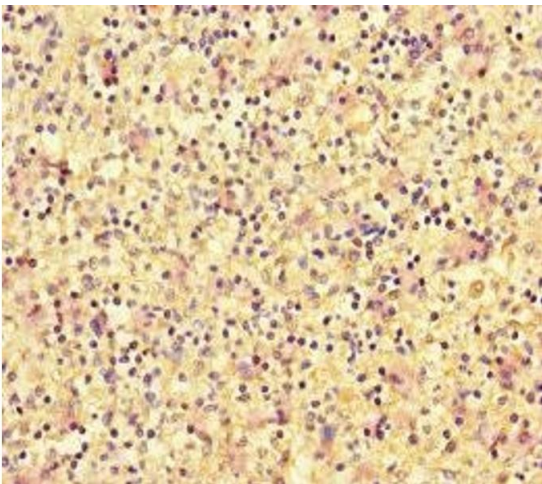
Western Blotting

Image 1. Western Blot Positive WB detected in: Jurkat whole cell lysate, Mouse heart tissue, Mouse kidney tissue, Mouse brain tissue All lanes: DOK2 antibody at 3.4 $\mu\text{g}/\text{mL}$ Secondary Goat polyclonal to rabbit IgG at 1/50000 dilution Predicted band size: 46 kDa Observed band size: 46 kDa



Immunofluorescence

Image 2. Immunofluorescent analysis of HeLa cells using ABIN7150566 at dilution of 1:100 and Alexa Fluor 488-conjugated AffiniPure Goat Anti-Rabbit IgG(H+L)



Immunohistochemistry

Image 3. Immunohistochemistry of paraffin-embedded human spleen tissue using ABIN7150566 at dilution of 1:100