

Datasheet for ABIN7150590
anti-DPM1 antibody (AA 2-260)[Go to Product page](#)

4 Images

Overview

Quantity:	100 µg
Target:	DPM1
Binding Specificity:	AA 2-260
Reactivity:	Human
Host:	Rabbit
Clonality:	Polyclonal
Conjugate:	This DPM1 antibody is un-conjugated
Application:	Western Blotting (WB), ELISA, Immunohistochemistry (IHC), Immunofluorescence (IF)

Product Details

Immunogen:	Recombinant Human Dolichol-phosphate mannosyltransferase subunit 1 protein (2-260AA)
Isotype:	IgG
Cross-Reactivity:	Human, Mouse
Purification:	>95%, Protein G purified

Target Details

Target:	DPM1
Alternative Name:	DPM1 (DPM1 Products)
Background:	Background: Transfers mannose from GDP-mannose to dolichol monophosphate to form dolichol phosphate mannose (Dol-P-Man) which is the mannosyl donor in pathways leading to

Target Details

N-glycosylation, glycosyl phosphatidylinositol membrane anchoring, and O-mannosylation of proteins, catalytic subunit of the dolichol-phosphate mannose (DPM) synthase complex.
Aliases: CDGIE antibody, dolichol monophosphate mannose synthase antibody, Dolichol phosphate mannose synthase antibody, Dolichol-phosphate mannose synthase antibody, Dolichol-phosphate mannosyltransferase antibody, Dolichyl phosphate beta D mannosyltransferase antibody, dolichyl phosphate mannosyltransferase polypeptide 1 antibody, dolichyl phosphate mannosyltransferase polypeptide 1 catalytic subunit antibody, Dolichyl-phosphate beta-D-mannosyltransferase antibody, DPM synthase antibody, DPM1 antibody, DPM1_HUMAN antibody, Mannose P dolichol synthase antibody, Mannose-P-dolichol synthase antibody, MPD synthase antibody, MPDS antibody

UniProt: [O60762](#)

Pathways: [Inositol Metabolic Process](#)

Application Details

Application Notes: Recommended dilution: WB:1:500-1:5000, IHC:1:20-1:200, IF:1:50-1:200,

Restrictions: For Research Use only

Handling

Format: Liquid

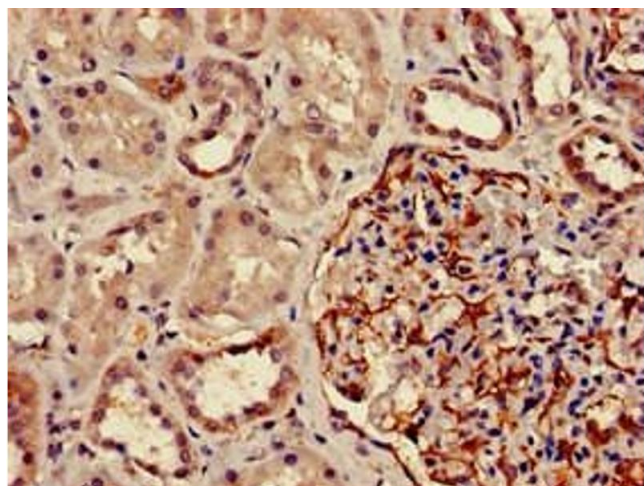
Buffer: Preservative: 0.03 % Proclin 300
Constituents: 50 % Glycerol, 0.01M PBS, pH 7.4

Preservative: ProClin

Precaution of Use: This product contains ProClin: a POISONOUS AND HAZARDOUS SUBSTANCE which should be handled by trained staff only.

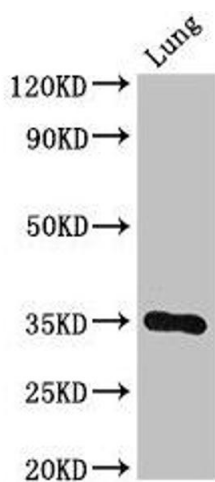
Storage: -20 °C,-80 °C

Storage Comment: Upon receipt, store at -20°C or -80°C. Avoid repeated freeze.



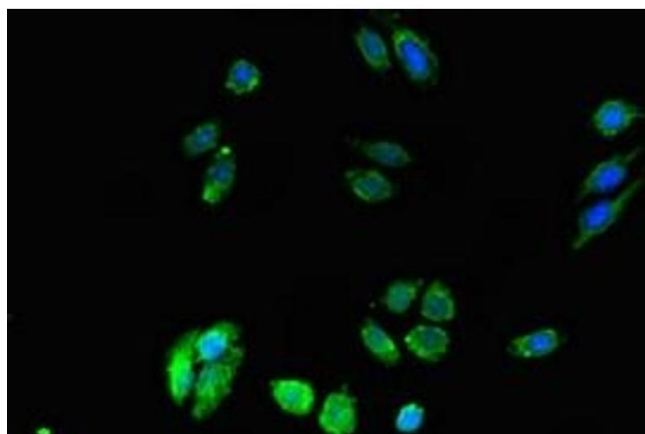
Immunohistochemistry

Image 1. Immunohistochemistry of paraffin-embedded human kidney tissue using ABIN7150590 at dilution of 1:100



Western Blotting

Image 2. Western Blot Positive WB detected in: Mouse lung tissue All lanes: DPM1 antibody at 3 µg/mL Secondary Goat polyclonal to rabbit IgG at 1/50000 dilution Predicted band size: 30 kDa Observed band size: 30 kDa



Immunofluorescence

Image 3. Immunofluorescent analysis of HepG2 cells using ABIN7150590 at dilution of 1:100 and Alexa Fluor 488-conjugated AffiniPure Goat Anti-Rabbit IgG(H+L)

Please check the [product details page](#) for more images. Overall 4 images are available for ABIN7150590.