



[Go to Product page](#)

Datasheet for ABIN7150701
anti-MEK2 antibody (AA 264-400)

3 Images

Overview

Quantity:	100 µg
Target:	MEK2 (MAP2K2)
Binding Specificity:	AA 264-400
Reactivity:	Human
Host:	Rabbit
Clonality:	Polyclonal
Conjugate:	This MEK2 antibody is un-conjugated
Application:	Western Blotting (WB), Immunohistochemistry (IHC), ELISA, Immunofluorescence (IF)

Product Details

Immunogen:	Recombinant Human Dual specificity mitogen-activated protein kinase kinase 2 protein (264-400AA)
Isotype:	IgG
Cross-Reactivity:	Human
Purification:	>95%, Protein G purified

Target Details

Target:	MEK2 (MAP2K2)
Alternative Name:	MAP2K2 (MAP2K2 Products)
Background:	Background: Catalyzes the concomitant phosphorylation of a threonine and a tyrosine residue

Target Details

in a Thr-Glu-Tyr sequence located in MAP kinases. Activates the ERK1 and ERK2 MAP kinases (By similarity).

Aliases: Cardiofaciocutaneous syndrome antibody, CFC syndrome antibody, CFC4 antibody, Dual specificity mitogen activated protein kinase kinase 2 antibody, Dual specificity mitogen-activated protein kinase kinase 2 antibody, ERK activator kinase 2 antibody, FLJ26075 antibody, MAP kinase kinase 2 antibody, map2k2 antibody, MAPK / ERK kinase 2 antibody, MAPK/ERK kinase 2 antibody, MAPKK 2 antibody, MAPKK2 antibody, MEK 2 antibody, MEK2 antibody, Microtubule associated protein kinase kinase 2 antibody, Mitogen activated protein kinase kinase 2 antibody, Mitogen activated protein kinase kinase 2 p45 antibody, MKK 2 antibody, MKK2 antibody, MP2K2_HUMAN antibody, OTTHUMP00000165826 antibody, OTTHUMP00000165827 antibody, PRKMK 2 antibody, PRKMK2 antibody

UniProt: [P36507](#)

Pathways: [MAPK Signaling](#), [RTK Signaling](#), [Fc-epsilon Receptor Signaling Pathway](#), [Neurotrophin Signaling Pathway](#), [Activation of Innate immune Response](#), [Toll-Like Receptors Cascades](#), [Signaling of Hepatocyte Growth Factor Receptor](#), [BCR Signaling](#)

Application Details

Application Notes: Recommended dilution: WB:1:2000-1:10000, IHC:1:20-1:200, IF:1:50-1:200,

Restrictions: For Research Use only

Handling

Format: Liquid

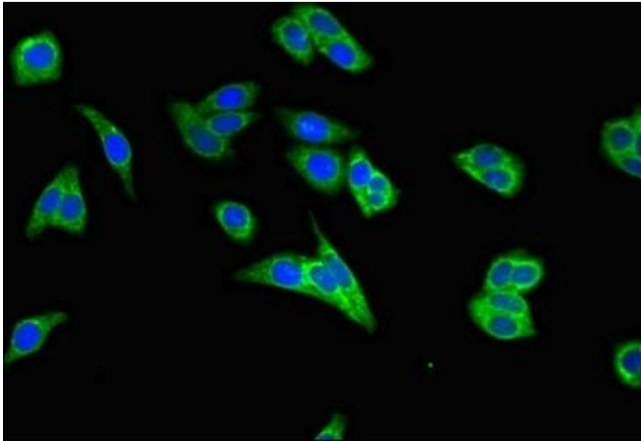
Buffer: Preservative: 0.03 % Proclin 300
Constituents: 50 % Glycerol, 0.01M PBS, PH 7.4

Preservative: ProClin

Precaution of Use: This product contains ProClin: a POISONOUS AND HAZARDOUS SUBSTANCE which should be handled by trained staff only.

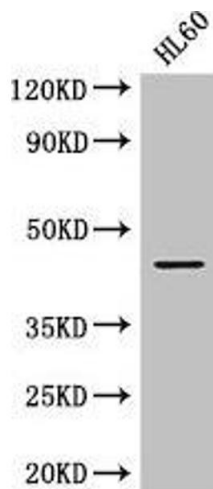
Storage: -20 °C,-80 °C

Storage Comment: Upon receipt, store at -20°C or -80°C. Avoid repeated freeze.



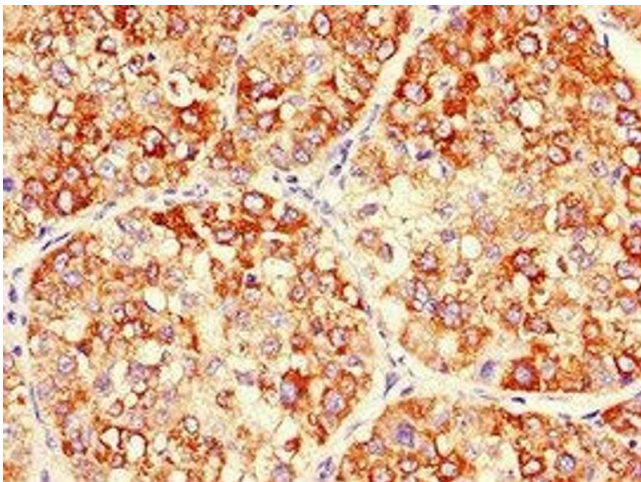
Immunofluorescence

Image 1. Immunofluorescent analysis of HepG2 cells using ABIN7150701 at dilution of 1:100 and Alexa Fluor 488-conjugated AffiniPure Goat Anti-Rabbit IgG(H+L)



Western Blotting

Image 2. Western Blot Positive WB detected in: HL60 whole cell lysate All lanes: MAP2K2 antibody at 2.8 µg/mL Secondary Goat polyclonal to rabbit IgG at 1/50000 dilution Predicted band size: 45 kDa Observed band size: 45 kDa



Immunohistochemistry

Image 3. Immunohistochemistry of paraffin-embedded human liver cancer using ABIN7150701 at dilution of 1:100