

Datasheet for ABIN7150717  
**anti-MAP2K5 antibody (AA 1-190)**

## 2 Images

[Go to Product page](#)

## Overview

Quantity:	100 µg
Target:	MAP2K5
Binding Specificity:	AA 1-190
Reactivity:	Human
Host:	Rabbit
Clonality:	Polyclonal
Conjugate:	This MAP2K5 antibody is un-conjugated
Application:	Western Blotting (WB), ELISA, Immunofluorescence (IF)

## Product Details

Immunogen:	Recombinant Human Dual specificity mitogen-activated protein kinase kinase 5 protein (1-190AA)
Isotype:	IgG
Cross-Reactivity:	Human, Mouse, Rat
Purification:	>95%, Protein G purified

## Target Details

Target:	MAP2K5
Alternative Name:	MAP2K5 ( <a href="#">MAP2K5 Products</a> )
Background:	Background: Acts as a scaffold for the formation of a ternary MAP3K2/MAP3K3-MAP3K5-

## Target Details

MAPK7 signaling complex. Activation of this pathway appears to play a critical role in protecting cells from stress-induced apoptosis, neuronal survival and cardiac development and angiogenesis.

Aliases: Dual specificity mitogen activated protein kinase kinase 5 antibody, Dual specificity mitogen-activated protein kinase kinase 5 antibody, EC 2.7.12.2 antibody, HsT17454 antibody, MAP kinase kinase 5 antibody, MAP kinase kinase MEK5b antibody, MAP2K5 antibody, MAPK/ERK kinase 5 antibody, MAPKK 5 antibody, MAPKK5 antibody, MEK 5 antibody, mitogen-activated protein kinase kinase 5 antibody, MKK5 antibody, MP2K5\_HUMAN antibody, PRKMK5 antibody, Protein kinase, mitogen-activated, kinase 5 antibody, SAPKK5 antibody, SKK5 antibody

UniProt: [Q13163](#)

Pathways: [MAPK Signaling](#), [Neurotrophin Signaling Pathway](#)

## Application Details

Application Notes: Recommended dilution: WB:1:500-1:5000, IF:1:200-1:500,

Restrictions: For Research Use only

## Handling

Format: Liquid

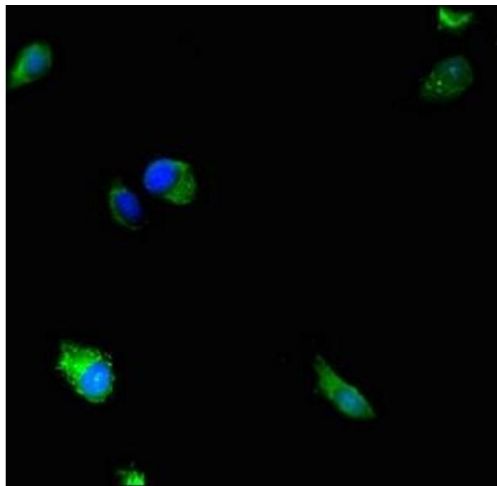
Buffer: Preservative: 0.03 % Proclin 300  
Constituents: 50 % Glycerol, 0.01M PBS, pH 7.4

Preservative: ProClin

Precaution of Use: This product contains ProClin: a POISONOUS AND HAZARDOUS SUBSTANCE which should be handled by trained staff only.

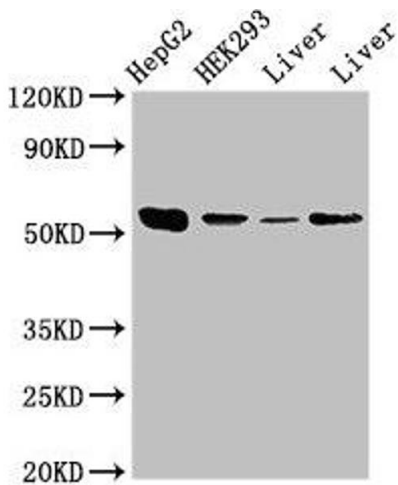
Storage: -20 °C,-80 °C

Storage Comment: Upon receipt, store at -20°C or -80°C. Avoid repeated freeze.



#### Immunofluorescence

**Image 1.** Immunofluorescence staining of Hela cells with ABIN7150717 at 1:233, counter-stained with DAPI. The cells were fixed in 4% formaldehyde, permeabilized using 0.2% Triton X-100 and blocked in 10% normal Goat Serum. The cells were then incubated with the antibody overnight at 4°C. The secondary antibody was Alexa Fluor 488-conjugated AffiniPure Goat Anti-Rabbit IgG(H+L).



#### Western Blotting

**Image 2.** Western Blot Positive WB detected in: HepG2 whole cell lysate, HEK293 whole cell lysate, Rat liver tissue, Mouse liver tissue All lanes: MAP2K5 antibody at 3.5 µg/mL Secondary Goat polyclonal to rabbit IgG at 1/50000 dilution Predicted band size: 51, 49, 50, 47 kDa Observed band size: 51 kDa