



[Go to Product page](#)

Datasheet for ABIN7150730
anti-CLK1 antibody (AA 1-130)

2 Images

Overview

Quantity:	100 µL
Target:	CLK1
Binding Specificity:	AA 1-130
Reactivity:	Human
Host:	Rabbit
Clonality:	Polyclonal
Conjugate:	This CLK1 antibody is un-conjugated
Application:	Western Blotting (WB), ELISA, Immunohistochemistry (IHC)

Product Details

Immunogen:	Recombinant Human Dual specificity protein kinase CLK1 protein (1-130AA)
Isotype:	IgG
Cross-Reactivity:	Human
Purification:	Antigen Affinity Purified

Target Details

Target:	CLK1
Alternative Name:	CLK1 (CLK1 Products)
Background:	Background: Dual specificity kinase acting on both serine/threonine and tyrosine-containing substrates. Phosphorylates serine- and arginine-rich (SR) proteins of the spliceosomal complex

Target Details

and may be a constituent of a network of regulatory mechanisms that enable SR proteins to control RNA splicing. Phosphorylates: SRSF1, SRSF3 and PTPN1. Regulates the alternative splicing of tissue factor (F3) pre-mRNA in endothelial cells and adenovirus E1A pre-mRNA. Aliases: CDC like kinase 1 antibody, CDC-like kinase 1 antibody, CDC28/CDC2 like kinase antibody, CLK antibody, CLK/STY antibody, Clk1 antibody, CLK1_HUMAN antibody, Dual specificity protein kinase CLK1 antibody, Protein tyrosine kinase STY antibody, STY antibody

UniProt: [P49759](#)

Application Details

Application Notes: Recommended dilution: WB:1:1000-1:5000, IHC:1:20-1:200,

Restrictions: For Research Use only

Handling

Format: Liquid

Buffer: PBS with 0.02 % sodium azide, 50 % glycerol, pH 7.3.

Preservative: Sodium azide

Precaution of Use: This product contains Sodium azide: a POISONOUS AND HAZARDOUS SUBSTANCE which should be handled by trained staff only.

Storage: -20 °C,-80 °C

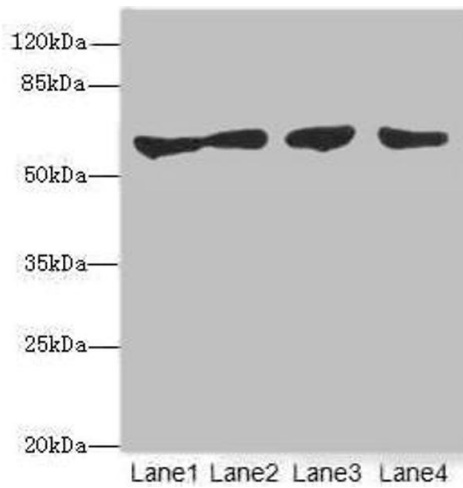
Storage Comment: Upon receipt, store at -20°C or -80°C. Avoid repeated freeze.

Images



Immunohistochemistry

Image 1. Immunohistochemistry of paraffin-embedded human skeletal muscle tissue using ABIN7150730 at dilution of 1:100



Western Blotting

Image 2. Western blot All lanes: CLK1antibody at 3.07 μ g/mL Lane 1: HepG2 whole cell lysate Lane 2: Jurkat whole cell lysate Lane 3: U251 whole cell lysate Lane 4: A549 whole cell lysate Secondary Goat polyclonal to rabbit IgG at 1/10000 dilution Predicted band size: 58, 17, 62 kDa Observed band size: 58 kDa