

Datasheet for ABIN7150731  
**anti-CLK2 antibody (AA 240-499)**[Go to Product page](#)

## 2 Images

## Overview

Quantity:	100 µL
Target:	CLK2
Binding Specificity:	AA 240-499
Reactivity:	Human
Host:	Rabbit
Clonality:	Polyclonal
Conjugate:	This CLK2 antibody is un-conjugated
Application:	Western Blotting (WB), ELISA, Immunohistochemistry (IHC)

## Product Details

Immunogen:	Recombinant Human Dual specificity protein kinase CLK2 protein (240-499AA)
Isotype:	IgG
Cross-Reactivity:	Human
Purification:	Antigen Affinity Purified

## Target Details

Target:	CLK2
Alternative Name:	CLK2 ( <a href="#">CLK2 Products</a> )
Background:	Background: Dual specificity kinase acting on both serine/threonine and tyrosine-containing substrates. Phosphorylates serine- and arginine-rich (SR) proteins of the spliceosomal complex.

## Target Details

May be a constituent of a network of regulatory mechanisms that enable SR proteins to control RNA splicing and can cause redistribution of SR proteins from speckles to a diffuse nucleoplasmic distribution. Acts as a suppressor of hepatic gluconeogenesis and glucose output by repressing PPARGC1A transcriptional activity on gluconeogenic genes via its phosphorylation. Phosphorylates PPP2R5B thereby stimulating the assembly of PP2A phosphatase with the PPP2R5B-AKT1 complex leading to dephosphorylation of AKT1. Phosphorylates: PTPN1, SRSF1 and SRSF3. Regulates the alternative splicing of tissue factor (F3) pre-mRNA in endothelial cells.

Aliases: CDC like kinase 2 antibody, CDC-like kinase 2 antibody, CLK 2 antibody, CLK kinase antibody, CLK2 antibody, Clk2 Scamp3 antibody, CLK2\_HUMAN antibody, Dual specificity protein kinase CLK2 antibody, hCLK 2 antibody, hCLK2 antibody, Tu52 antibody

UniProt: [P49760](#)

Pathways: [Regulation of Carbohydrate Metabolic Process](#)

## Application Details

Application Notes: Recommended dilution: WB:1:500-1:2000, IHC:1:20-1:200,

Restrictions: For Research Use only

## Handling

Format: Liquid

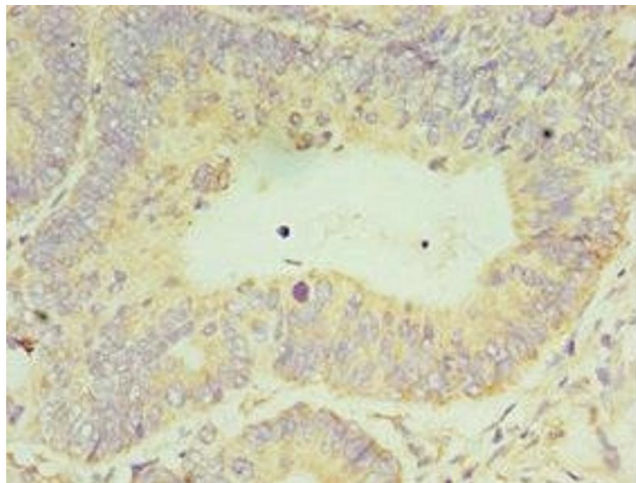
Buffer: PBS with 0.02 % sodium azide, 50 % glycerol, pH 7.3.

Preservative: Sodium azide

Precaution of Use: This product contains Sodium azide: a POISONOUS AND HAZARDOUS SUBSTANCE which should be handled by trained staff only.

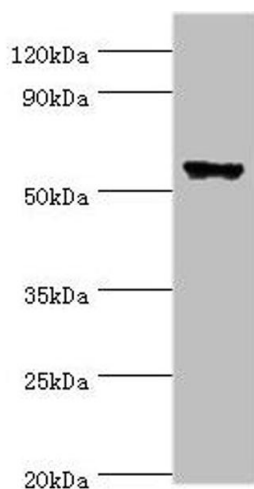
Storage: -20 °C,-80 °C

Storage Comment: Upon receipt, store at -20°C or -80°C. Avoid repeated freeze.



### Immunohistochemistry

**Image 1.** Immunohistochemistry of paraffin-embedded human colon cancer using ABIN7150731 at dilution of 1:100



### Western Blotting

**Image 2.** Western blot All lanes: CLK2 antibody at 5 µg/mL + HeLa whole cell lysate Secondary Goat polyclonal to rabbit IgG at 1/10000 dilution Predicted band size: 61, 18, 60 kDa Observed band size: 61 kDa