

Datasheet for ABIN7150760  
**anti-DUSP21 antibody (AA 1-190)**



[Go to Product page](#)

1 Image

## Overview

Quantity:	100 µg
Target:	DUSP21
Binding Specificity:	AA 1-190
Reactivity:	Human
Host:	Rabbit
Clonality:	Polyclonal
Conjugate:	This DUSP21 antibody is un-conjugated
Application:	ELISA, Immunohistochemistry (IHC)

## Product Details

Immunogen:	Recombinant Human Dual specificity protein phosphatase 21 protein (1-190AA)
Isotype:	IgG
Cross-Reactivity:	Human
Purification:	>95%, Protein G purified

## Target Details

Target:	DUSP21
Alternative Name:	DUSP21 ( <a href="#">DUSP21 Products</a> )
Background:	Background: Can dephosphorylate single and diphosphorylated synthetic MAPK peptides, with preference for the phosphotyrosine and diphosphorylated forms over phosphothreonine.

## Target Details

Aliases: DUSP21 antibody, LMWDSP21Dual specificity protein phosphatase 21 antibody, EC 3.1.3.16 antibody, EC 3.1.3.48 antibody, Low molecular weight dual specificity phosphatase 21 antibody, LMW-DSP21 antibody

UniProt: [Q9H596](#)

## Application Details

Application Notes: Recommended dilution: IHC:1:20-1:200,

Restrictions: For Research Use only

## Handling

Format: Liquid

Buffer: Preservative: 0.03 % Proclin 300  
Constituents: 50 % Glycerol, 0.01M PBS, PH 7.4

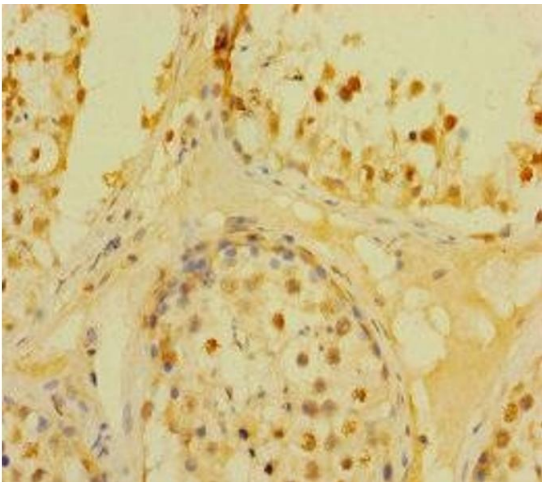
Preservative: ProClin

Precaution of Use: This product contains ProClin: a POISONOUS AND HAZARDOUS SUBSTANCE which should be handled by trained staff only.

Storage: -20 °C,-80 °C

Storage Comment: Upon receipt, store at -20°C or -80°C. Avoid repeated freeze.

## Images



### Immunohistochemistry

**Image 1.** Immunohistochemistry of paraffin-embedded human testis tissue using ABIN7150760 at dilution of 1:100