

Datasheet for ABIN7150786
anti-DUSP9 antibody (AA 142-263)[Go to Product page](#)

3 Images

Overview

Quantity:	100 µg
Target:	DUSP9
Binding Specificity:	AA 142-263
Reactivity:	Human
Host:	Rabbit
Clonality:	Polyclonal
Conjugate:	This DUSP9 antibody is un-conjugated
Application:	ELISA, Immunohistochemistry (IHC), Immunofluorescence (IF)

Product Details

Immunogen:	Recombinant Human Dual specificity protein phosphatase 9 protein (142-263AA)
Isotype:	IgG
Cross-Reactivity:	Human
Purification:	>95%, Protein G purified

Target Details

Target:	DUSP9
Alternative Name:	DUSP9 (DUSP9 Products)
Background:	Background: Inactivates MAP kinases. Has a specificity for the ERK family. Aliases: Dual specificity phosphatase 9 antibody, Dual specificity protein phosphatase 9

Target Details

antibody, DUS9_HUMAN antibody, DUSP9 antibody, MAP kinase phosphatase 4 antibody, Mitogen activated protein kinase phosphatase 4 antibody, Mitogen-activated protein kinase phosphatase 4 antibody, MKP 4 antibody, MKP-4 antibody, MKP4 antibody, serine/threonine specific protein phosphatase antibody

UniProt: [Q99956](#)

Application Details

Application Notes: Recommended dilution: IHC:1:500-1:1000, IF:1:200-1:500,

Restrictions: For Research Use only

Handling

Format: Liquid

Buffer: Preservative: 0.03 % Proclin 300
Constituents: 50 % Glycerol, 0.01M PBS, pH 7.4

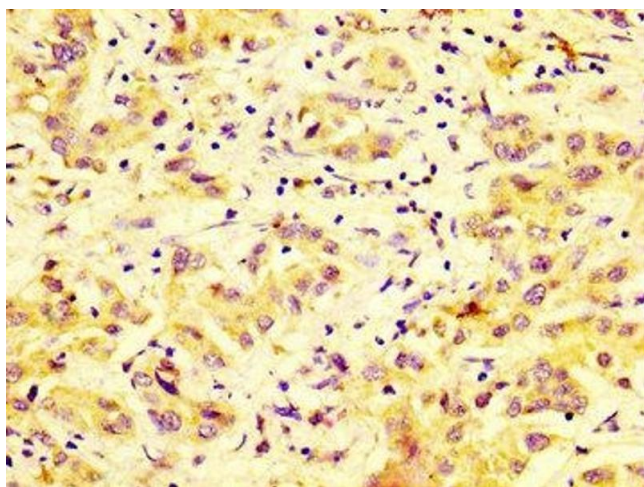
Preservative: ProClin

Precaution of Use: This product contains ProClin: a POISONOUS AND HAZARDOUS SUBSTANCE which should be handled by trained staff only.

Storage: -20 °C,-80 °C

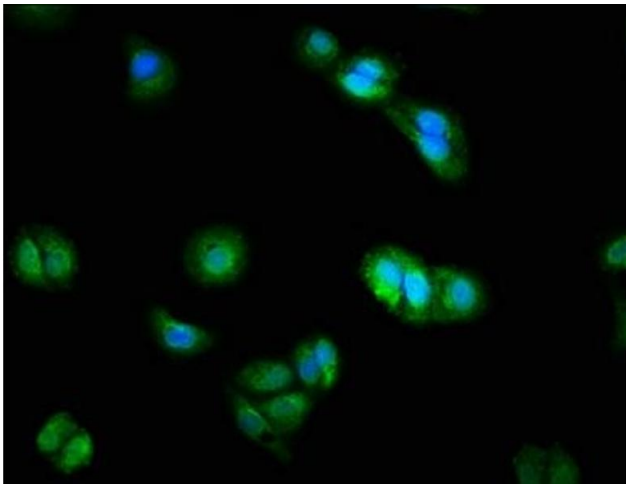
Storage Comment: Upon receipt, store at -20°C or -80°C. Avoid repeated freeze.

Images



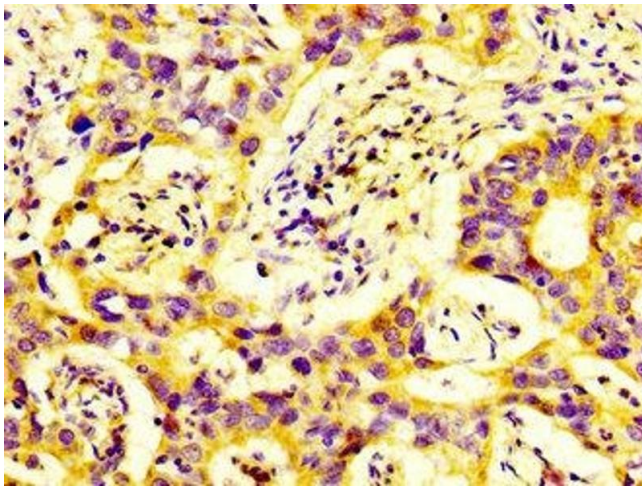
Immunohistochemistry

Image 1. IHC image of ABIN7150786 diluted at 1:600 and staining in paraffin-embedded human liver cancer performed on a Leica Bond™ system. After dewaxing and hydration, antigen retrieval was mediated by high pressure in a citrate buffer (pH 6.0). Section was blocked with 10% normal goat serum 30min at RT. Then primary antibody (1% BSA) was incubated at 4°C overnight. The primary is detected by a biotinylated secondary antibody and visualized using an HRP conjugated SP system.



Immunofluorescence

Image 2. Immunofluorescence staining of HepG2 cells with ABIN7150786 at 1:200, counter-stained with DAPI. The cells were fixed in 4% formaldehyde, permeabilized using 0.2% Triton X-100 and blocked in 10% normal Goat Serum. The cells were then incubated with the antibody overnight at 4°C. The secondary antibody was Alexa Fluor 488-conjugated AffiniPure Goat Anti-Rabbit IgG(H+L).



Immunohistochemistry

Image 3. IHC image of ABIN7150786 diluted at 1:600 and staining in paraffin-embedded human bladder cancer performed on a Leica Bond™ system. After dewaxing and hydration, antigen retrieval was mediated by high pressure in a citrate buffer (pH 6.0). Section was blocked with 10% normal goat serum 30min at RT. Then primary antibody (1% BSA) was incubated at 4°C overnight. The primary is detected by a biotinylated secondary antibody and visualized using an HRP conjugated SP system.