

Datasheet for ABIN7150800  
**anti-Dymeclin antibody (AA 224-348)**



[Go to Product page](#)

3 Images

### Overview

Quantity:	100 µg
Target:	Dymeclin (DYM)
Binding Specificity:	AA 224-348
Reactivity:	Human
Host:	Rabbit
Clonality:	Polyclonal
Conjugate:	This Dymeclin antibody is un-conjugated
Application:	Western Blotting (WB), ELISA, Immunohistochemistry (IHC)

### Product Details

Immunogen:	Recombinant Human Dymeclin protein (224-348AA)
Isotype:	IgG
Cross-Reactivity:	Human, Mouse
Purification:	>95%, Protein G purified

### Target Details

Target:	Dymeclin (DYM)
Alternative Name:	DYM ( <a href="#">DYM Products</a> )
Background:	Background: Necessary for correct organization of Golgi apparatus. Involved in bone development.

## Target Details

Aliases: DYMDymeclin antibody, Dyggve-Melchior-Clausen syndrome protein antibody

UniProt: [Q7RTS9](#)

## Application Details

Application Notes: Recommended dilution: WB:1:500-1:5000, IHC:1:500-1:1000,

Restrictions: For Research Use only

## Handling

Format: Liquid

Buffer: Preservative: 0.03 % Proclin 300  
Constituents: 50 % Glycerol, 0.01M PBS, pH 7.4

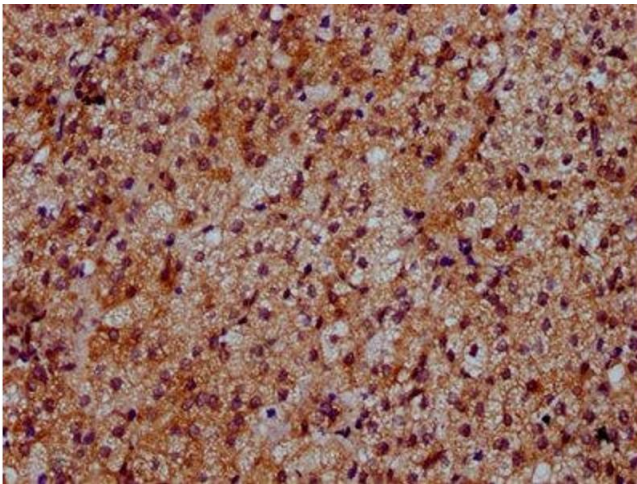
Preservative: ProClin

Precaution of Use: This product contains ProClin: a POISONOUS AND HAZARDOUS SUBSTANCE which should be handled by trained staff only.

Storage: -20 °C,-80 °C

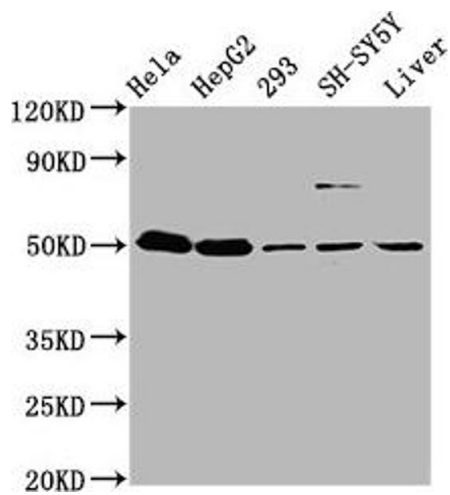
Storage Comment: Upon receipt, store at -20°C or -80°C. Avoid repeated freeze.

## Images



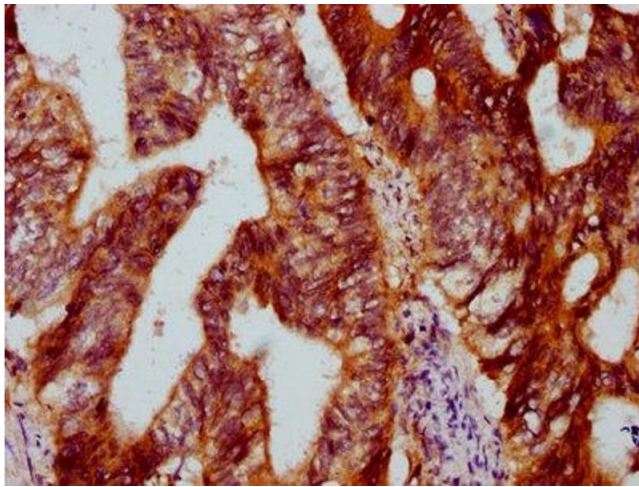
### Immunohistochemistry

**Image 1.** IHC image of ABIN7150800 diluted at 1:500 and staining in paraffin-embedded human adrenal gland tissue performed on a Leica Bond™ system. After dewaxing and hydration, antigen retrieval was mediated by high pressure in a citrate buffer (pH 6.0). Section was blocked with 10% normal goat serum 30min at RT. Then primary antibody (1% BSA) was incubated at 4°C overnight. The primary is detected by a biotinylated secondary antibody and visualized using an HRP conjugated SP system.



### Western Blotting

**Image 2.** Western Blot Positive WB detected in: HeLa whole cell lysate, HepG2 whole cell lysate, 293 whole cell lysate, SH-SY5Y whole cell lysate, Mouse liver tissue All lanes: DYM antibody at 3.7 µg/mL Secondary Goat polyclonal to rabbit IgG at 1/50000 dilution Predicted band size: 76, 55 kDa Observed band size: 55 kDa



### Immunohistochemistry

**Image 3.** IHC image of ABIN7150800 diluted at 1:500 and staining in paraffin-embedded human colon cancer performed on a Leica Bond™ system. After dewaxing and hydration, antigen retrieval was mediated by high pressure in a citrate buffer (pH 6.0). Section was blocked with 10% normal goat serum 30min at RT. Then primary antibody (1% BSA) was incubated at 4°C overnight. The primary is detected by a biotinylated secondary antibody and visualized using an HRP conjugated SP system.