



[Go to Product page](#)

Datasheet for ABIN7150841  
**anti-OPA1 antibody (AA 183-351)**

1 Image

### Overview

Quantity:	100 µL
Target:	OPA1
Binding Specificity:	AA 183-351
Reactivity:	Human
Host:	Rabbit
Clonality:	Polyclonal
Conjugate:	This OPA1 antibody is un-conjugated
Application:	Western Blotting (WB), ELISA

### Product Details

Immunogen:	Recombinant Human Dynamin-like 120 kDa protein, mitochondrial protein (183-351AA)
Isotype:	IgG
Cross-Reactivity:	Human, Mouse
Purification:	Antigen Affinity Purified

### Target Details

Target:	OPA1
Alternative Name:	OPA1 ( <a href="#">OPA1 Products</a> )
Background:	Background: Dynamin-related GTPase required for mitochondrial fusion and regulation of apoptosis. May form a diffusion barrier for proteins stored in mitochondrial cristae. Proteolytic

## Target Details

---

processing in response to intrinsic apoptotic signals may lead to disassembly of OPA1 oligomers and release of the caspase activator cytochrome C (CYCS) into the mitochondrial intermembrane space. May also play a role in mitochondrial genome maintenance.

Aliases: Dynamin like 120 kDa protein antibody, Dynamin like 120 kDa protein, mitochondrial antibody, Dynamin-like 120 kDa protein, form S1 antibody, FLJ12460 antibody, Juvenile kjer type optic atrophy antibody, KIAA0567 antibody, KJER type antibody, Large GTP binding protein antibody, largeG antibody, MGM1 antibody, Mitochondrial dynamin like 120 kDa protein antibody, Mitochondrial dynamin like GTPase antibody, NPG antibody, NTG antibody, OAK antibody, OPA 1 antibody, opa1 antibody, OPA1 gene antibody, OPA1\_HUMAN antibody, Optic atrophy 1 (autosomal dominant) antibody, OPTIC ATROPHY 1 antibody, Optic atrophy 1 gene protein antibody, Optic atrophy 1 homolog (human) antibody, Optic atrophy protein 1 antibody, Optic atrophy protein 1 homolog antibody

---

UniProt: [O60313](#)

---

Pathways: [Tube Formation](#)

## Application Details

---

---

Application Notes: Recommended dilution: WB:1:1000-1:5000,

---

Restrictions: For Research Use only

## Handling

---

---

Format: Liquid

---

Buffer: Preservative: 0.03 % Proclin 300  
Constituents: 50 % Glycerol, 0.01M PBS, pH 7.4

---

Preservative: ProClin

---

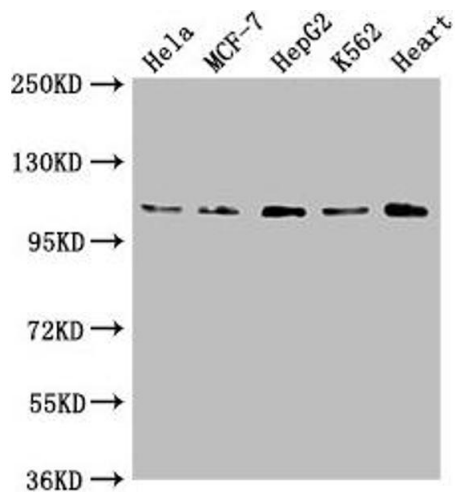
Precaution of Use: This product contains ProClin: a POISONOUS AND HAZARDOUS SUBSTANCE which should be handled by trained staff only.

---

Storage: -20 °C,-80 °C

---

Storage Comment: Upon receipt, store at -20°C or -80°C. Avoid repeated freeze.



### Western Blotting

**Image 1.** Western Blot Positive WB detected in: HeLa whole cell lysate, MCF-7 whole cell lysate, HepG2 whole cell lysate, K562 whole cell lysate, Mouse heart tissue All lanes: OPA1 antibody at 1:2000 Secondary Goat polyclonal to rabbit IgG at 1/50000 dilution Predicted band size: 112, 116 kDa Observed band size: 112 kDa