



[Go to Product page](#)

Datasheet for ABIN7150938
anti-EAPP antibody (AA 1-285)

2 Images

Overview

Quantity:	100 µg
Target:	EAPP
Binding Specificity:	AA 1-285
Reactivity:	Human
Host:	Rabbit
Clonality:	Polyclonal
Conjugate:	This EAPP antibody is un-conjugated
Application:	ELISA, Western Blotting (WB), Immunohistochemistry (IHC)

Product Details

Immunogen:	Recombinant Human E2F-associated phosphoprotein protein (1-285AA)
Isotype:	IgG
Cross-Reactivity:	Human
Purification:	>95%, Protein G purified

Target Details

Target:	EAPP
Alternative Name:	EAPP (EAPP Products)
Background:	Background: May play an important role in the fine-tuning of both major E2F1 activities, the regulation of the cell-cycle and the induction of apoptosis. Promotes S-phase entry, and inhibits

Target Details

p14(ARP) expression.

Aliases: 1810011016Rik antibody, BM-036 antibody, BM036 antibody, C14orf11 antibody, E2F-associated phosphoprotein antibody, EAPP antibody, EAPP_HUMAN antibody, RGD1309624 antibody

UniProt: [Q56P03](#)

Application Details

Application Notes: Recommended dilution: WB:1:500-1:5000, IHC:1:200-1:500,

Restrictions: For Research Use only

Handling

Format: Liquid

Buffer: Preservative: 0.03 % Proclin 300
Constituents: 50 % Glycerol, 0.01M PBS, PH 7.4

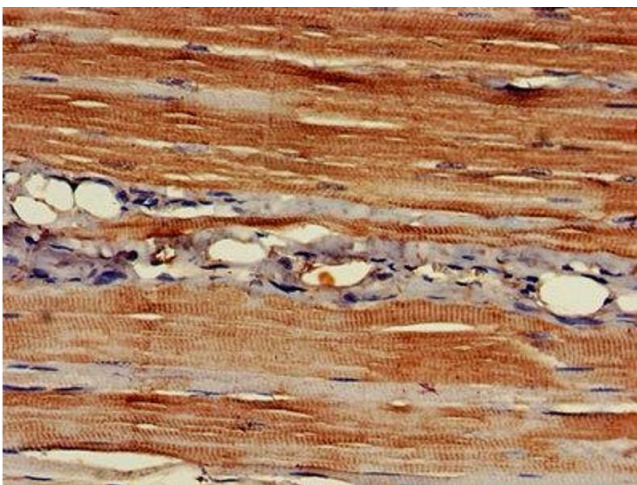
Preservative: ProClin

Precaution of Use: This product contains ProClin: a POISONOUS AND HAZARDOUS SUBSTANCE which should be handled by trained staff only.

Storage: -20 °C,-80 °C

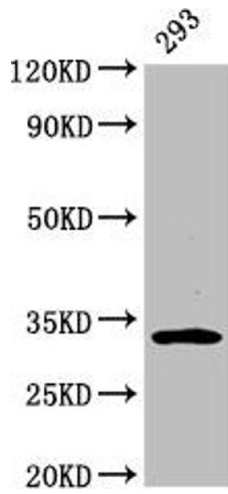
Storage Comment: Upon receipt, store at -20°C or -80°C. Avoid repeated freeze.

Images



Immunohistochemistry

Image 1. IHC image of ABIN7150938 diluted at 1:400 and staining in paraffin-embedded human skeletal muscle tissue performed on a Leica Bond™ system. After dewaxing and hydration, antigen retrieval was mediated by high pressure in a citrate buffer (pH 6.0). Section was blocked with 10% normal goat serum 30min at RT. Then primary antibody (1% BSA) was incubated at 4°C overnight. The primary is detected by a biotinylated secondary antibody and visualized using an HRP conjugated SP system.



Western Blotting

Image 2. Western Blot Positive WB detected in: 293 whole cell lysate All lanes: EAPP antibody at 3.2 $\mu\text{g}/\text{mL}$ Secondary Goat polyclonal to rabbit IgG at 1/50000 dilution Predicted band size: 33 kDa Observed band size: 33 kDa