



[Go to Product page](#)

Datasheet for ABIN7150946  
**anti-HERC5 antibody (AA 153-284)**

2 Images

Overview

Quantity:	100 µg
Target:	HERC5
Binding Specificity:	AA 153-284
Reactivity:	Human
Host:	Rabbit
Clonality:	Polyclonal
Conjugate:	This HERC5 antibody is un-conjugated
Application:	ELISA, Immunohistochemistry (IHC), Immunofluorescence (IF)

Product Details

Immunogen:	Recombinant Human E3 ISG15--protein ligase HERC5 protein (153-284AA)
Isotype:	IgG
Cross-Reactivity:	Human
Purification:	>95%, Protein G purified

Target Details

Target:	HERC5
Alternative Name:	HERC5 ( <a href="#">HERC5 Products</a> )
Background:	Background: Major E3 ligase for ISG15 conjugation. Acts as a positive regulator of innate antiviral response in cells induced by interferon. Functions as part of the ISGylation machinery

## Target Details

---

that recognizes target proteins in a broad and relatively non-specific manner. Catalyzes ISGylation of IRF3 which results in sustained activation, it attenuates IRF3-PIN1 interaction, which antagonizes IRF3 ubiquitination and degradation, and boosts the antiviral response. Catalyzes ISGylation of influenza A viral NS1 which attenuates virulence, ISGylated NS1 fails to form homodimers and thus to interact with its RNA targets. Catalyzes ISGylation of papillomavirus type 16 L1 protein which results in dominant-negative effect on virus infectivity. Physically associated with polyribosomes, broadly modifies newly synthesized proteins in a cotranslational manner. In an interferon-stimulated cell, newly translated viral proteins are primary targets of ISG15.

Aliases: CEB1 antibody, CEBP1 antibody, Cyclin E binding protein 1 antibody, Cyclin-E-binding protein 1 antibody, E3 ISG15--protein ligase HERC5 antibody, HECT domain and RCC1 like domain containing protein 5 antibody, HECT domain and RCC1-like domain-containing protein 5 antibody, Hect domain and RLD 5 antibody, HECT E3 ubiquitin ligase antibody, HERC5 antibody, HERC5\_HUMAN antibody, Herc6 antibody

---

UniProt: [Q9UII4](#)

## Application Details

---

Application Notes: Recommended dilution: IHC:1:20-1:200, IF:1:20-1:200,

Restrictions: For Research Use only

## Handling

---

Format: Liquid

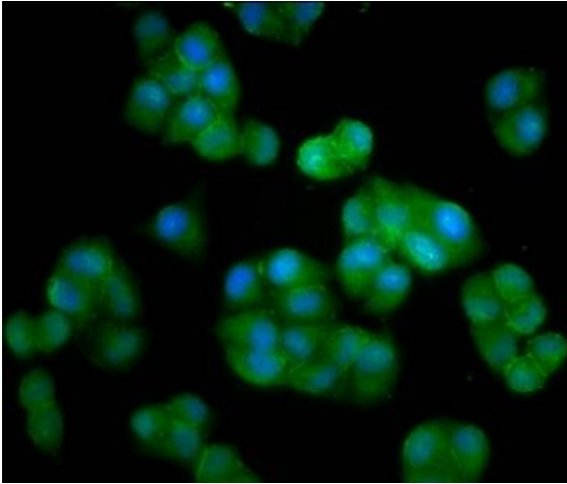
Buffer: Preservative: 0.03 % Proclin 300  
Constituents: 50 % Glycerol, 0.01M PBS, pH 7.4

Preservative: ProClin

Precaution of Use: This product contains ProClin: a POISONOUS AND HAZARDOUS SUBSTANCE which should be handled by trained staff only.

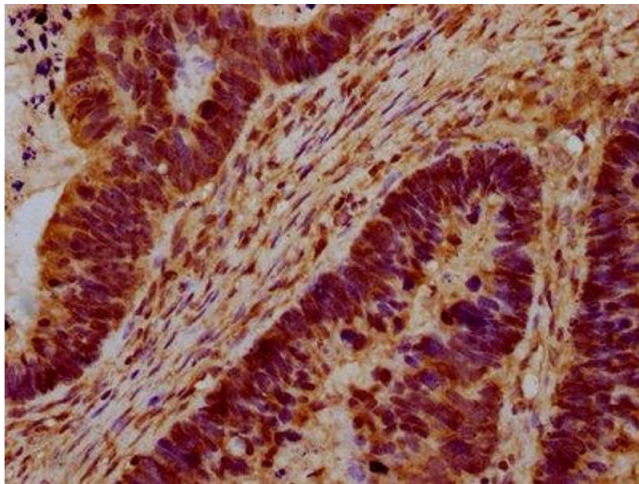
Storage: -20 °C,-80 °C

Storage Comment: Upon receipt, store at -20°C or -80°C. Avoid repeated freeze.



#### Immunofluorescence

**Image 1.** Immunofluorescence staining of HeLa cells with ABIN7150946 at 1:33, counter-stained with DAPI. The cells were fixed in 4% formaldehyde, permeabilized using 0.2% Triton X-100 and blocked in 10% normal Goat Serum. The cells were then incubated with the antibody overnight at 4°C. The secondary antibody was Alexa Fluor 488-conjugated AffiniPure Goat Anti-Rabbit IgG(H+L).



#### Immunohistochemistry

**Image 2.** IHC image of ABIN7150946 diluted at 1:100 and staining in paraffin-embedded human ovarian cancer performed on a Leica Bond™ system. After dewaxing and hydration, antigen retrieval was mediated by high pressure in a citrate buffer (pH 6.0). Section was blocked with 10% normal goat serum 30min at RT. Then primary antibody (1% BSA) was incubated at 4°C overnight. The primary is detected by a biotinylated secondary antibody and visualized using an HRP conjugated SP system.