

Datasheet for ABIN7150950
anti-CBX4 antibody (AA 1-160)[Go to Product page](#)

3 Images

Overview

Quantity:	100 µg
Target:	CBX4
Binding Specificity:	AA 1-160
Reactivity:	Human
Host:	Rabbit
Clonality:	Polyclonal
Conjugate:	This CBX4 antibody is un-conjugated
Application:	ELISA, Immunohistochemistry (IHC), Immunofluorescence (IF)

Product Details

Immunogen:	Recombinant Human E3 SUMO-protein ligase CBX4 protein (1-160AA)
Isotype:	IgG
Cross-Reactivity:	Human
Purification:	>95%, Protein G purified

Target Details

Target:	CBX4
Alternative Name:	CBX4 (CBX4 Products)
Background:	Background: E3 SUMO-protein ligase which facilitates SUMO1 conjugation by UBE2I. Involved in the sumoylation of HNRNPK, a p53/TP53 transcriptional coactivator, hence indirectly

Target Details

regulates p53/TP53 transcriptional activation resulting in p21/CDKN1A expression.

Monosumoylates ZNF131.

Aliases: CBX 4 antibody, CBX4 antibody, Cbx4 chromobox homolog 4 (Drosophila Pc class) antibody, CBX4_HUMAN antibody, Chromobox homolog 4 (Pc class homolog, Drosophila) antibody, Chromobox homolog 4 antibody, Chromobox protein homolog 4 antibody, E3 SUMO protein ligase CBX 4 antibody, E3 SUMO protein ligase CBX4 antibody, E3 SUMO-protein ligase CBX4 antibody, hPc 2 antibody, hPc2 antibody, NBP 16 antibody, NBP16 antibody, NS5ATP1 binding protein 16 antibody, Pc 2 antibody, Pc class 2 homolog antibody, Pc class homolog antibody, Pc class homolog Drosophila antibody, PC2 antibody, Polycomb 2 homolog antibody

UniProt: [O00257](#)

Application Details

Application Notes: Recommended dilution: IHC:1:200-1:500, IF:1:50-1:200,

Restrictions: For Research Use only

Handling

Format: Liquid

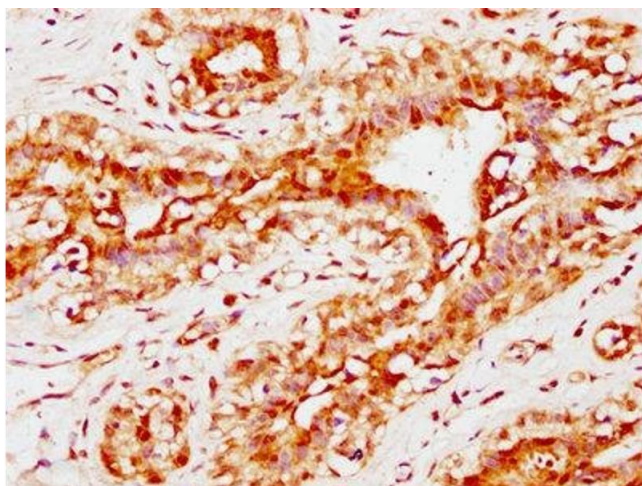
Buffer: Preservative: 0.03 % Proclin 300
Constituents: 50 % Glycerol, 0.01M PBS, pH 7.4

Preservative: ProClin

Precaution of Use: This product contains ProClin: a POISONOUS AND HAZARDOUS SUBSTANCE which should be handled by trained staff only.

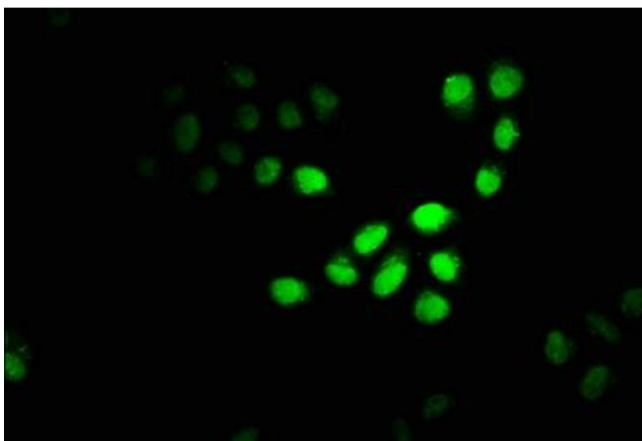
Storage: -20 °C,-80 °C

Storage Comment: Upon receipt, store at -20°C or -80°C. Avoid repeated freeze.



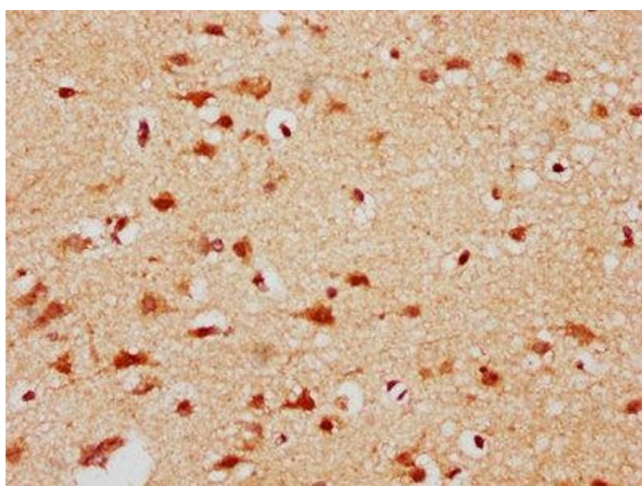
Immunohistochemistry

Image 1. IHC image of ABIN7150950 diluted at 1:300 and staining in paraffin-embedded human breast cancer performed on a Leica Bond™ system. After dewaxing and hydration, antigen retrieval was mediated by high pressure in a citrate buffer (pH 6.0). Section was blocked with 10% normal goat serum 30min at RT. Then primary antibody (1% BSA) was incubated at 4°C overnight. The primary is detected by a biotinylated secondary antibody and visualized using an HRP conjugated SP system.



Immunofluorescence

Image 2. Immunofluorescence staining of Hela cells with ABIN7150950 at 1:100, counter-stained with DAPI. The cells were fixed in 4% formaldehyde, permeabilized using 0.2% Triton X-100 and blocked in 10% normal Goat Serum. The cells were then incubated with the antibody overnight at 4°C. The secondary antibody was Alexa Fluor 488-conjugated AffiniPure Goat Anti-Rabbit IgG(H+L).



Immunohistochemistry

Image 3. IHC image of ABIN7150950 diluted at 1:300 and staining in paraffin-embedded human brain tissue performed on a Leica Bond™ system. After dewaxing and hydration, antigen retrieval was mediated by high pressure in a citrate buffer (pH 6.0). Section was blocked with 10% normal goat serum 30min at RT. Then primary antibody (1% BSA) was incubated at 4°C overnight. The primary is detected by a biotinylated secondary antibody and visualized using an HRP conjugated SP system.