

Datasheet for ABIN7150959  
**anti-NSMCE2 antibody (AA 1-247)**[Go to Product page](#)

## 1 Image

## Overview

|                      |                                       |
|----------------------|---------------------------------------|
| Quantity:            | 100 µg                                |
| Target:              | NSMCE2                                |
| Binding Specificity: | AA 1-247                              |
| Reactivity:          | Human                                 |
| Host:                | Rabbit                                |
| Clonality:           | Polyclonal                            |
| Conjugate:           | This NSMCE2 antibody is un-conjugated |
| Application:         | ELISA, Immunohistochemistry (IHC)     |

## Product Details

|                   |   |
|-------------------|---|
| Immunogen:        | Recombinant Human E3 SUMO-protein ligase NSE2 protein (1-247AA) |
| Isotype:          | IgG   |
| Cross-Reactivity: | Human   |
| Purification:     | >95%, Protein G purified  |

## Target Details

|                   |   |
|-------------------|---|
| Target:           | NSMCE2  |
| Alternative Name: | NSMCE2 ( <a href="#">NSMCE2 Products</a> )  |
| Background:       | Background: E3 SUMO-protein ligase component of the SMC5-SMC6 complex, a complex involved in DNA double-strand break repair by homologous recombination. Is not be required |

## Target Details

for the stability of the complex. The complex may promote sister chromatid homologous recombination by recruiting the SMC1-SMC3 cohesin complex to double-strand breaks. The complex is required for telomere maintenance via recombination in ALT (alternative lengthening of telomeres) cell lines and mediates sumoylation of shelterin complex (telosome) components which is proposed to lead to shelterin complex disassembly in ALT-associated PML bodies (APBs). Acts as a E3 ligase mediating SUMO attachment to various proteins such as SMC6L1 and TRAX, the shelterin complex subunits TERF1, TERF2, TINF2 and TERF2IP, and maybe the cohesin components RAD21 and STAG2. Required for recruitment of telomeres to PML nuclear bodies. SUMO protein-ligase activity is required for the prevention of DNA damage-induced apoptosis by facilitating DNA repair, and for formation of APBs in ALT cell lines. Required for sister chromatid cohesion during prometaphase and mitotic progression.

Aliases: C8orf36 antibody, E3 SUMO-protein ligase NSE2 antibody, hMMS21 antibody, hNSE2 antibody, methyl methanesulfonate sensitivity gene 21 antibody, MMS21 antibody, MMS21 homolog antibody, non-SMC element 2 antibody, Non-SMC element 2 homolog antibody, Non-structural maintenance of chromosomes element 2 homolog antibody, NSE2 antibody, NSE2\_HUMAN antibody, Nsmce2 antibody

UniProt: [Q96MF7](#)

## Application Details

Application Notes: Recommended dilution: IHC:1:500-1:1000,

Restrictions: For Research Use only

## Handling

Format: Liquid

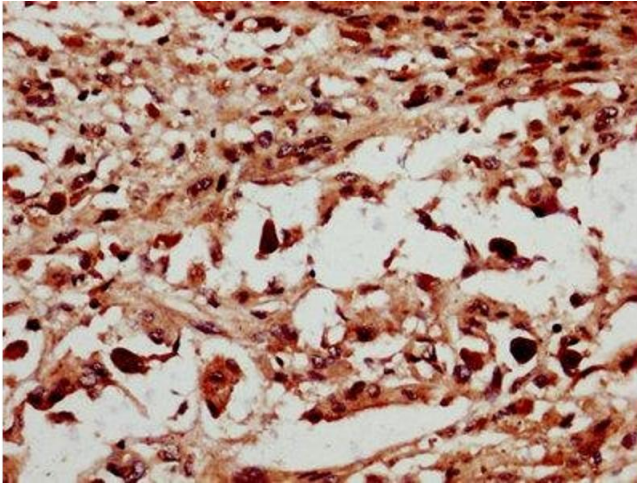
Buffer: Preservative: 0.03 % Proclin 300  
Constituents: 50 % Glycerol, 0.01M PBS, PH 7.4

Preservative: ProClin

Precaution of Use: This product contains ProClin: a POISONOUS AND HAZARDOUS SUBSTANCE which should be handled by trained staff only.

Storage: -20 °C,-80 °C

Storage Comment: Upon receipt, store at -20°C or -80°C. Avoid repeated freeze.



#### Immunohistochemistry

**Image 1.** IHC image of ABIN7150959 diluted at 1:600 and staining in paraffin-embedded human melanoma performed on a Leica Bond™ system. After dewaxing and hydration, antigen retrieval was mediated by high pressure in a citrate buffer (pH 6.0). Section was blocked with 10% normal goat serum 30min at RT. Then primary antibody (1% BSA) was incubated at 4°C overnight. The primary is detected by a biotinylated secondary antibody and visualized using an HRP conjugated SP system.