

Datasheet for ABIN7151000
anti-CBLC antibody (AA 245-474)[Go to Product page](#)

3 Images

Overview

Quantity:	100 µL
Target:	CBLC
Binding Specificity:	AA 245-474
Reactivity:	Human
Host:	Rabbit
Clonality:	Polyclonal
Conjugate:	This CBLC antibody is un-conjugated
Application:	Western Blotting (WB), ELISA, Immunohistochemistry (IHC)

Product Details

Immunogen:	Recombinant Human E3 ubiquitin-protein ligase CBL-C protein (245-474AA)
Isotype:	IgG
Cross-Reactivity:	Human
Purification:	Antigen Affinity Purified

Target Details

Target:	CBLC
Alternative Name:	CBLC (CBLC Products)
Background:	Background: Acts as an E3 ubiquitin-protein ligase, which accepts ubiquitin from specific E2 ubiquitin-conjugating enzymes, and then transfers it to substrates promoting their degradation

Target Details

by the proteasome. Functionally coupled with the E2 ubiquitin-protein ligases UB2D1, UB2D2 and UB2D3. Regulator of EGFR mediated signal transduction, upon EGF activation, ubiquitinates EGFR. Isoform 1, but not isoform 2, inhibits EGF stimulated MAPK1 activation. Promotes ubiquitination of SRC phosphorylated at '\Tyr-419\'. In collaboration with CD2AP may act as regulatory checkpoint for Ret signaling by modulating the rate of RET degradation after ligand activation, CD2AP converts it from an inhibitor to a promoter of RET degradation, the function limits the potency of GDNF on neuronal survival.

Aliases: CBLC antibody, CBL3 antibody, RNF57E3 ubiquitin-protein ligase CBL-C antibody, EC 2.3.2.27 antibody, RING finger protein 57 antibody, RING-type E3 ubiquitin transferase CBL-C antibody, SH3-binding protein CBL-3 antibody, SH3-binding protein CBL-C antibody, Signal transduction protein CBL-C antibody

UniProt: [Q9ULV8](#)

Pathways: [EGFR Signaling Pathway](#)

Application Details

Application Notes: Recommended dilution: WB:1:500-1:2000, IHC:1:20-1:200,

Restrictions: For Research Use only

Handling

Format: Liquid

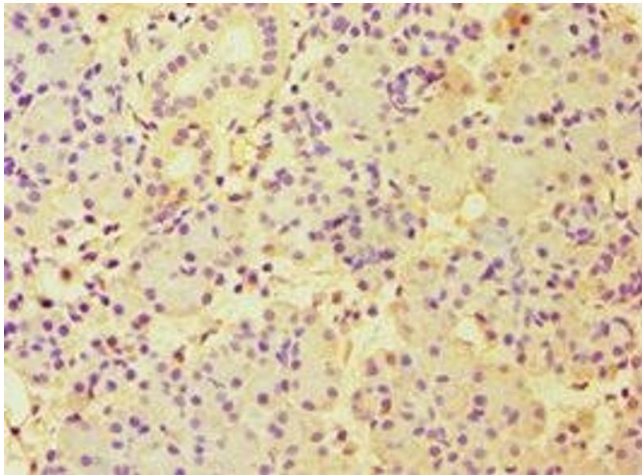
Buffer: PBS with 0.02 % sodium azide, 50 % glycerol, pH 7.3.

Preservative: Sodium azide

Precaution of Use: This product contains Sodium azide: a POISONOUS AND HAZARDOUS SUBSTANCE which should be handled by trained staff only.

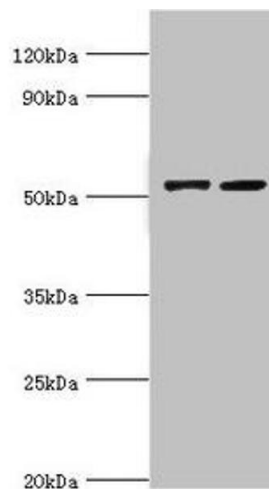
Storage: -20 °C,-80 °C

Storage Comment: Upon receipt, store at -20°C or -80°C. Avoid repeated freeze.



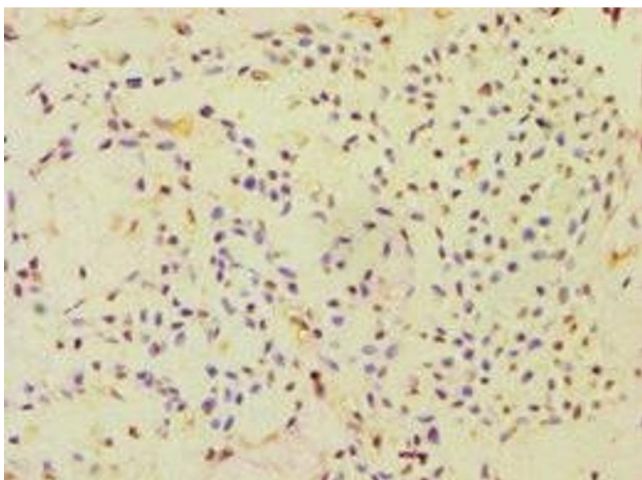
Immunohistochemistry

Image 1. Immunohistochemistry of paraffin-embedded human pancreatic tissue using ABIN7151000 at dilution of 1:100



Western Blotting

Image 2. Western blot All lanes: CBLC antibody at 14 µg/mL
Lane 1: A549 whole cell lysate Lane 2: Hela whole cell lysate
Secondary Goat polyclonal to rabbit IgG at 1/10000 dilution
Predicted band size: 53, 48 kDa Observed band size: 53 kDa



Immunohistochemistry

Image 3. Immunohistochemistry of paraffin-embedded human breast cancer using ABIN7151000 at dilution of 1:100