



[Go to Product page](#)

Datasheet for ABIN7151005
anti-CHFR antibody (AA 141-422)

3 Images

Overview

Quantity:	100 µg
Target:	CHFR
Binding Specificity:	AA 141-422
Reactivity:	Human
Host:	Rabbit
Clonality:	Polyclonal
Conjugate:	This CHFR antibody is un-conjugated
Application:	ELISA, Western Blotting (WB), Immunohistochemistry (IHC)

Product Details

Immunogen:	Recombinant Human E3 ubiquitin-protein ligase CHFR protein (141-422AA)
Isotype:	IgG
Cross-Reactivity:	Human, Mouse
Purification:	>95%, Protein G purified

Target Details

Target:	CHFR
Alternative Name:	CHFR (CHFR Products)
Background:	Background: E3 ubiquitin-protein ligase that functions in the antephasal checkpoint by actively delaying passage into mitosis in response to microtubule poisons. Acts in early prophase

Target Details

before chromosome condensation, when the centrosome move apart from each other along the periphery of the nucleus. Probably involved in signaling the presence of mitotic stress caused by microtubule poisons by mediating the Lys-48-linked ubiquitination of target proteins, leading to their degradation by the proteasome. Promotes the ubiquitination and subsequent degradation of AURKA and PLK1. Probably acts as a tumor suppressor, possibly by mediating the polyubiquitination of HDAC1, leading to its degradation. May also promote the formation of Lys-63-linked polyubiquitin chains and functions with the specific ubiquitin-conjugating UBC13-MMS2 (UBE2N-UBE2V2) heterodimer. Substrates that are polyubiquitinated at Lys-63 are usually not targeted for degradation, but are rather involved in signaling cellular stress.

Aliases: Checkpoint with forkhead and ring finger domains antibody, Checkpoint with forkhead and RING finger domains protein antibody, Chfr antibody, CHFR_HUMAN antibody, E3 ubiquitin protein ligase CHFR antibody, E3 ubiquitin-protein ligase CHFR antibody, EC 6.3.2. antibody, FLJ10796 antibody, FLJ33629 antibody, RING finger protein 196 antibody, RNF 116 antibody, RNF 196 antibody, RNF116 antibody, RNF196 antibody, Ubiquitin ligase protein antibody

UniProt: [Q96EP1](#)

Application Details

Application Notes: Recommended dilution: WB:1:1000-1:5000, IHC:1:20-1:200,

Restrictions: For Research Use only

Handling

Format: Liquid

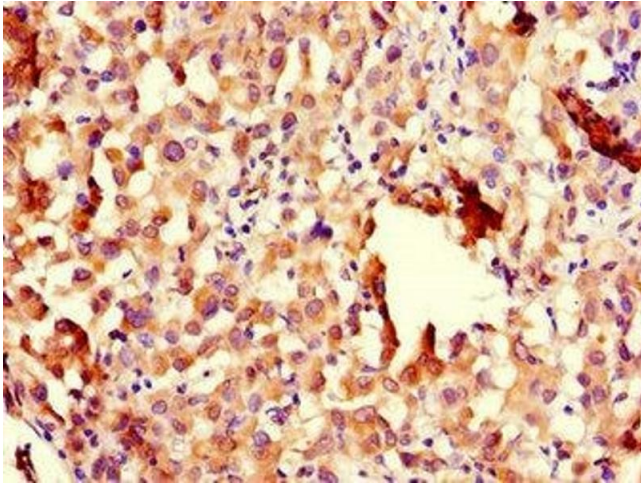
Buffer: Preservative: 0.03 % Proclin 300
Constituents: 50 % Glycerol, 0.01M PBS, PH 7.4

Preservative: ProClin

Precaution of Use: This product contains ProClin: a POISONOUS AND HAZARDOUS SUBSTANCE which should be handled by trained staff only.

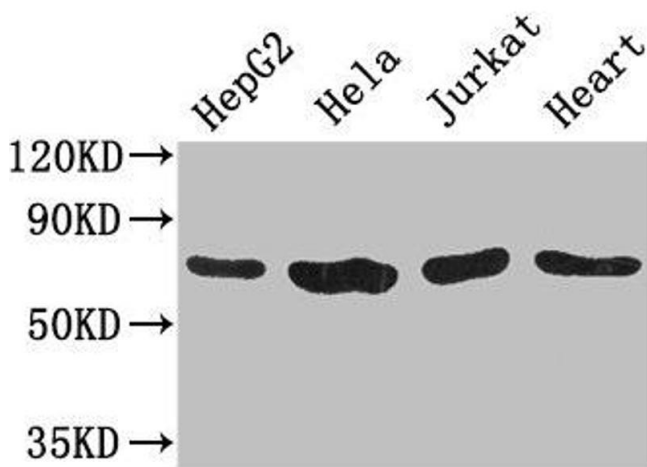
Storage: -20 °C,-80 °C

Storage Comment: Upon receipt, store at -20°C or -80°C. Avoid repeated freeze.



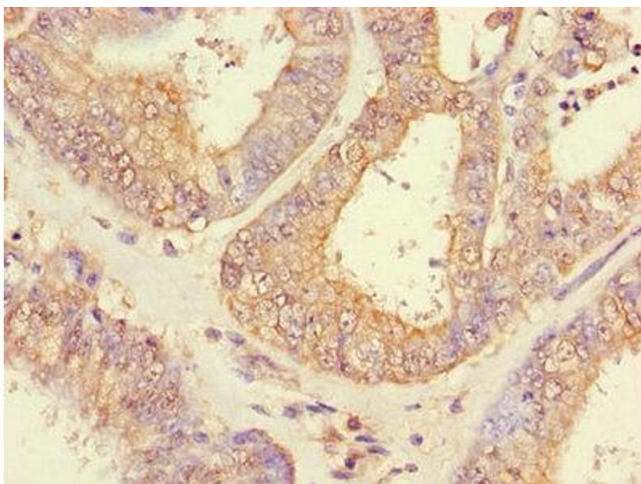
Immunohistochemistry

Image 1. Immunohistochemistry of paraffin-embedded human lung cancer using ABIN7151005 at dilution of 1:100



Western Blotting

Image 2. Western Blot Positive WB detected in: HepG2 whole cell lysate, HeLa whole cell lysate, Jurkat whole cell lysate, Mouse heart tissue All lanes: CHFR antibody at 3.2 μ g/mL Secondary Goat polyclonal to rabbit IgG at 1/50000000 dilution Predicted band size: 74, 73, 70, 64 kDa Observed band size: 74 kDa



Immunohistochemistry

Image 3. Immunohistochemistry of paraffin-embedded human endometrial cancer using ABIN7151005 at dilution of 1:100