

Datasheet for ABIN7151021
anti-FANCL antibody (AA 138-248)[Go to Product page](#)

2 Images

Overview

Quantity:	100 µg
Target:	FANCL
Binding Specificity:	AA 138-248
Reactivity:	Human
Host:	Rabbit
Clonality:	Polyclonal
Conjugate:	This FANCL antibody is un-conjugated
Application:	ELISA, Immunohistochemistry (IHC), Immunofluorescence (IF)

Product Details

Immunogen:	Recombinant Human E3 ubiquitin-protein ligase FANCL protein (138-248AA)
Isotype:	IgG
Cross-Reactivity:	Human
Purification:	>95%, Protein G purified

Target Details

Target:	FANCL
Alternative Name:	FANCL (FANCL Products)
Background:	Background: Ubiquitin ligase protein that mediates monoubiquitination of FANCD2, a key step in the DNA damage pathway. Also mediates monoubiquitination of FANCL. May stimulate the

Target Details

ubiquitin release from UBE2W. May be required for proper primordial germ cell proliferation in the embryonic stage, whereas it is probably not needed for spermatogonial proliferation after birth.

Aliases: E3 ubiquitin-protein ligase FANCL antibody, FAAP43 antibody, Fancl antibody, FANCL_HUMAN antibody, Fanconi anemia complementation group L antibody, Fanconi anemia group L protein antibody, Fanconi anemia-associated polypeptide of 43 kDa antibody, FLJ10335 antibody, PHD finger protein 9 antibody, PHF9 antibody, POG antibody, Ubiquitin ligase protein FANCL antibody

UniProt: [Q9NW38](#)

Pathways: [DNA Damage Repair](#)

Application Details

Application Notes: Recommended dilution: IHC:1:500-1:1000, IF:1:200-1:500,

Restrictions: For Research Use only

Handling

Format: Liquid

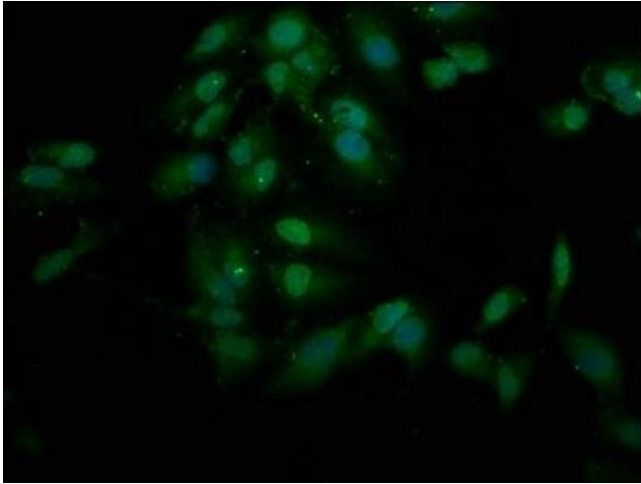
Buffer: Preservative: 0.03 % Proclin 300
Constituents: 50 % Glycerol, 0.01M PBS, pH 7.4

Preservative: ProClin

Precaution of Use: This product contains ProClin: a POISONOUS AND HAZARDOUS SUBSTANCE which should be handled by trained staff only.

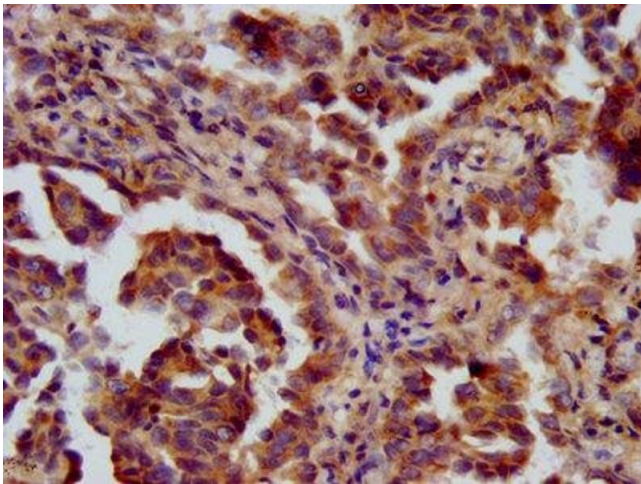
Storage: -20 °C, -80 °C

Storage Comment: Upon receipt, store at -20°C or -80°C. Avoid repeated freeze.



Immunofluorescence

Image 1. Immunofluorescence staining of HeLa cells with ABIN7151021 at 1:200, counter-stained with DAPI. The cells were fixed in 4% formaldehyde, permeabilized using 0.2% Triton X-100 and blocked in 10% normal Goat Serum. The cells were then incubated with the antibody overnight at 4°C. The secondary antibody was Alexa Fluor 488-conjugated AffiniPure Goat Anti-Rabbit IgG(H+L).



Immunohistochemistry

Image 2. IHC image of ABIN7151021 diluted at 1:600 and staining in paraffin-embedded human lung cancer performed on a Leica Bond™ system. After dewaxing and hydration, antigen retrieval was mediated by high pressure in a citrate buffer (pH 6.0). Section was blocked with 10% normal goat serum 30min at RT. Then primary antibody (1% BSA) was incubated at 4°C overnight. The primary is detected by a biotinylated secondary antibody and visualized using an HRP conjugated SP system.