

Datasheet for ABIN7151033
anti-HECW1 antibody (AA 751-900)



[Go to Product page](#)

1 Image

Overview

Quantity:	100 µL
Target:	HECW1
Binding Specificity:	AA 751-900
Reactivity:	Human
Host:	Rabbit
Clonality:	Polyclonal
Conjugate:	This HECW1 antibody is un-conjugated
Application:	ELISA, Immunofluorescence (IF)

Product Details

Immunogen:	Recombinant Human E3 ubiquitin-protein ligase HECW1 protein (751-900AA)
Isotype:	IgG
Cross-Reactivity:	Human
Purification:	>95%, Antigen Affinity purified & Affinity purified

Target Details

Target:	HECW1
Alternative Name:	HECW1 (HECW1 Products)
Background:	Background: E3 ubiquitin-protein ligase that mediates ubiquitination and subsequent degradation of DVL1. Also targets the mutant SOD1 protein involved in familial amyotrophic

Target Details

lateral sclerosis (FALS). Forms cytotoxic aggregates with DVL1, SSR3 and mutant SOD1 that lead to motor neuron death in FALS.

Aliases: C2 and WW domain-containing protein 1 antibody, E3 ubiquitin-protein ligase HECW1 antibody, HECT antibody, HECT type E3 ubiquitin ligase antibody, HECT, C2 and WW domain containing E3 ubiquitin protein ligase 1 antibody, HECT, C2 and WW domain-containing protein 1 antibody, HECW 1 antibody, Hecw1 antibody, HECW1_HUMAN antibody, hNEDL1 antibody, NEDD4 like ubiquitin protein ligase 1 antibody, NEDD4-like E3 ubiquitin-protein ligase 1 antibody, NEDL1 antibody

UniProt: [Q76N89](#)

Application Details

Application Notes: Recommended dilution: IF:1:50-1:200,

Restrictions: For Research Use only

Handling

Format: Liquid

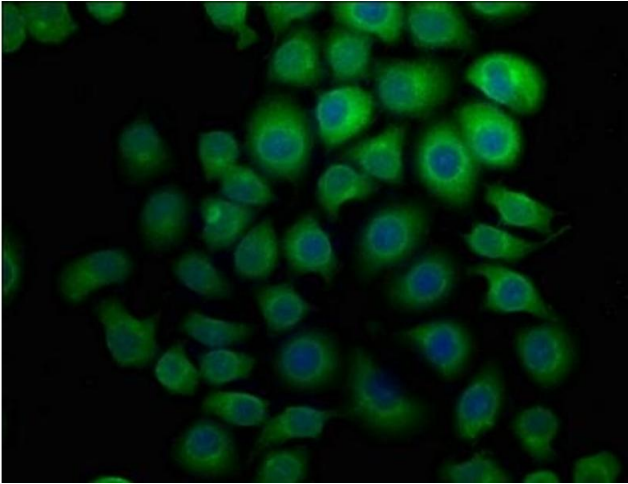
Buffer: Preservative: 0.03 % Proclin 300
Constituents: 50 % Glycerol, 0.01M PBS, pH 7.4

Preservative: ProClin

Precaution of Use: This product contains ProClin: a POISONOUS AND HAZARDOUS SUBSTANCE which should be handled by trained staff only.

Storage: -20 °C,-80 °C

Storage Comment: Upon receipt, store at -20°C or -80°C. Avoid repeated freeze.



Immunofluorescence

Image 1. Immunofluorescence staining of A549 cells with ABIN7151033 at 1:133, counter-stained with DAPI. The cells were fixed in 4 % formaldehyde, permeabilized using 0.2 % Triton X-100 and blocked in 10 % normal Goat Serum. The cells were then incubated with the antibody overnight at 4 °C. The secondary antibody was Alexa Fluor 488-conjugated AffiniPure Goat Anti-Rabbit IgG(H+L).