

Datasheet for ABIN7151045
anti-KCMF1 antibody (AA 98-226)[Go to Product page](#)

2 Images

Overview

Quantity:	100 µg
Target:	KCMF1
Binding Specificity:	AA 98-226
Reactivity:	Human
Host:	Rabbit
Clonality:	Polyclonal
Conjugate:	This KCMF1 antibody is un-conjugated
Application:	ELISA, Immunohistochemistry (IHC)

Product Details

Immunogen:	Recombinant Human E3 ubiquitin-protein ligase KCMF1 protein (98-226AA)
Isotype:	IgG
Cross-Reactivity:	Human
Purification:	>95%, Protein G purified

Target Details

Target:	KCMF1
Alternative Name:	KCMF1 (KCMF1 Products)
Background:	Background: Has intrinsic E3 ubiquitin ligase activity and promotes ubiquitination. Aliases: KCMF1 antibody, FIGC antibody, ZZZ1 antibody, E3 ubiquitin-protein ligase KCMF1

Target Details

antibody, EC 2.3.2.27 antibody, FGF-induced in gastric cancer antibody, Potassium channel modulatory factor antibody, PCMF antibody, RING-type E3 ubiquitin transferase KCMF1 antibody, ZZ-type zinc finger-containing protein 1 antibody

UniProt: [Q9P0J7](#)

Application Details

Application Notes: Recommended dilution: IHC:1:500-1:1000,

Restrictions: For Research Use only

Handling

Format: Liquid

Buffer: Preservative: 0.03 % Proclin 300
Constituents: 50 % Glycerol, 0.01M PBS, pH 7.4

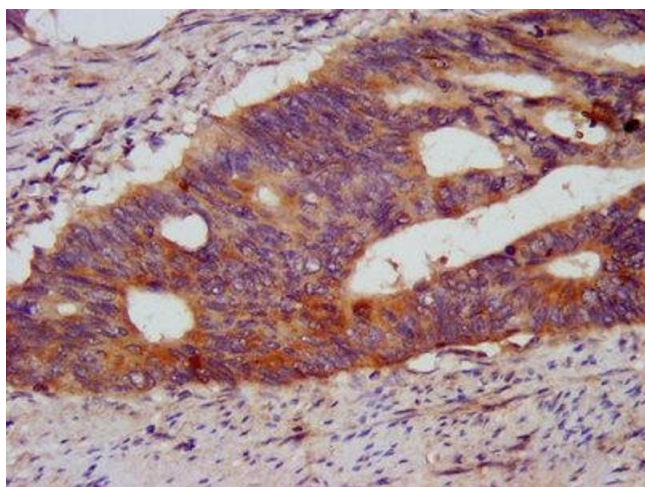
Preservative: ProClin

Precaution of Use: This product contains ProClin: a POISONOUS AND HAZARDOUS SUBSTANCE which should be handled by trained staff only.

Storage: -20 °C,-80 °C

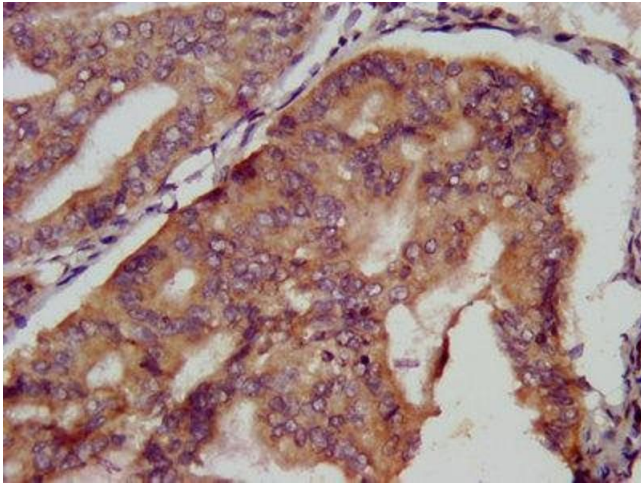
Storage Comment: Upon receipt, store at -20°C or -80°C. Avoid repeated freeze.

Images



Immunohistochemistry

Image 1. IHC image of ABIN7151045 diluted at 1:500 and staining in paraffin-embedded human colon cancer performed on a Leica Bond™ system. After dewaxing and hydration, antigen retrieval was mediated by high pressure in a citrate buffer (pH 6.0). Section was blocked with 10% normal goat serum 30min at RT. Then primary antibody (1% BSA) was incubated at 4°C overnight. The primary is detected by a biotinylated secondary antibody and visualized using an HRP conjugated SP system.



Immunohistochemistry

Image 2. IHC image of ABIN7151045 diluted at 1:500 and staining in paraffin-embedded human endometrial cancer performed on a Leica BondTM system. After dewaxing and hydration, antigen retrieval was mediated by high pressure in a citrate buffer (pH 6.0). Section was blocked with 10% normal goat serum 30min at RT. Then primary antibody (1% BSA) was incubated at 4°C overnight. The primary is detected by a biotinylated secondary antibody and visualized using an HRP conjugated SP system.